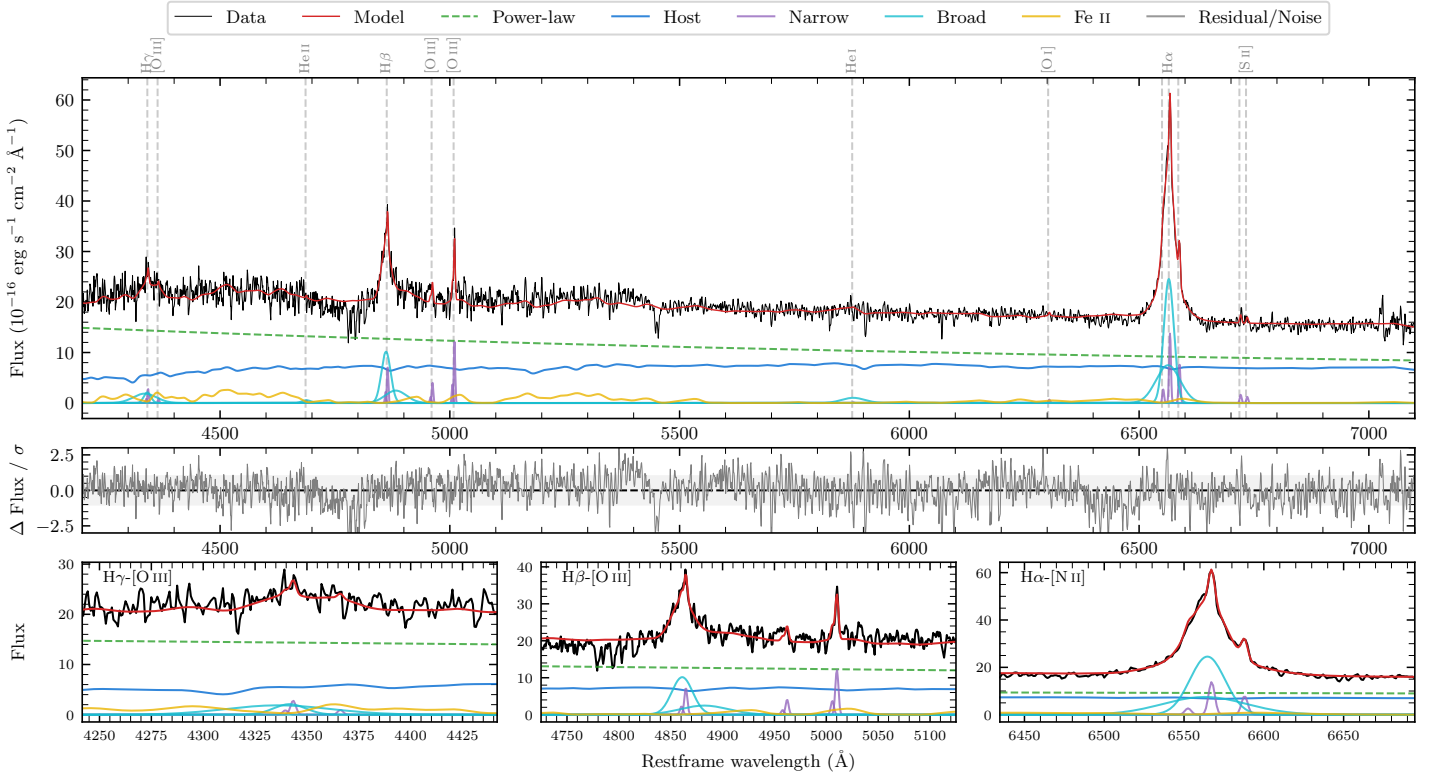
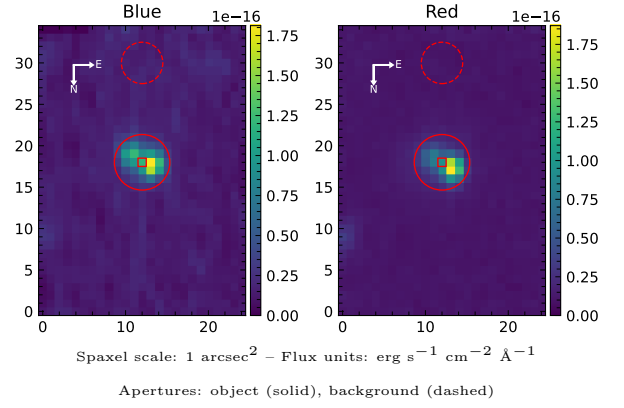


# LEDA 3095700

Spectrum ID	25156608_sp1	Spectrum type	Sy 1.0
Alt name	g0447390-040330	Quality flag	good
$z$	0.0819	AGN reference	6dFGS
RA, Dec	71.9124, -4.0583	MW $E(B - V)$	0.035
MJD	60912.79	Power law $\alpha_\nu$	$-0.92 \pm 0.05$
SNR/ $\text{\AA}$ B/R	11.4/19.0	$\log L_{5100, \text{AGN}}$	$44.00 \pm 0.01$
Obs airmass	1.22	$\log H\beta_{\text{Br}}/[\text{O III}]$	$0.82 \pm 0.06$
SMSS ID	25156608	$\log M_{L5100}/M_\odot$	$7.33 \pm 0.03$
Neighbour	None $< 15''$	$\log M_{\text{H}\alpha}/M_\odot$	$6.97 \pm 0.04$
SMSS $\langle r_6 \rangle_{\text{ap}}$	$15.47 \pm 0.02$	$\log M_{\text{H}\beta}/M_\odot$	$7.19 \pm 0.04$
2MASS $K_{\text{ext}}$	nan $\pm$ nan	$\log M_{[\text{O III}]} / M_\odot$	$6.95 \pm 0.05$



## Emission Line Measurements

Line	$\log L$ ( $\text{erg s}^{-1}$ )	FWHM ( $\text{km s}^{-1}$ )	$\sigma$ ( $\text{km s}^{-1}$ )	EW ( $\text{\AA}$ )
H $\gamma$ Narrow	$40.33 \pm 0.30$	$231 \pm 64$	$144 \pm 27$	$0.90 \pm 0.32$
<b>H<math>\gamma</math> Broad</b>	<b><math>41.45 \pm 0.09</math></b>	<b><math>1972 \pm 609</math></b>	<b><math>1191 \pm 112</math></b>	<b><math>11.89 \pm 1.26</math></b>
[O III] 4364	—	—	—	—
He II Narrow	—	—	—	—
<b>He II Broad</b>	<b><math>40.39 \pm 0.36</math></b>	<b><math>1466 \pm 63</math></b>	<b><math>622 \pm 25</math></b>	<b><math>1.12 \pm 0.66</math></b>
H $\beta$ Narrow	$40.79 \pm 0.11$	$231 \pm 64$	$144 \pm 27$	$2.98 \pm 0.33$
<b>H<math>\beta</math> Broad</b>	<b><math>41.85 \pm 0.03</math></b>	<b><math>1636 \pm 63</math></b>	<b><math>791 \pm 39</math></b>	<b><math>34.03 \pm 1.12</math></b>
[O III] 5007	$41.03 \pm 0.05$	$231 \pm 64$	$144 \pm 27$	$5.31 \pm 0.34$
He I Narrow	—	—	—	—
<b>He I Broad</b>	<b><math>41.06 \pm 0.08</math></b>	<b><math>2981 \pm 65</math></b>	<b><math>1266 \pm 26</math></b>	<b><math>6.72 \pm 0.79</math></b>
[O I] 6300	$39.76 \pm 0.35$	$220 \pm 63$	$90 \pm 25$	$0.36 \pm 0.19$
H $\alpha$ Narrow	$41.08 \pm 0.03$	$220 \pm 63$	$90 \pm 25$	$8.07 \pm 0.28$
<b>H<math>\alpha</math> Broad</b>	<b><math>42.32 \pm 0.01</math></b>	<b><math>1369 \pm 64</math></b>	<b><math>636 \pm 25</math></b>	<b><math>137.52 \pm 0.84</math></b>
[N II] 6585	$40.84 \pm 0.04$	$220 \pm 63$	$90 \pm 25$	$4.62 \pm 0.24$
[S II] 6718	$40.17 \pm 0.16$	$220 \pm 63$	$90 \pm 25$	$1.01 \pm 0.23$
[S II] 6732	$40.04 \pm 0.21$	$220 \pm 63$	$90 \pm 25$	$0.76 \pm 0.28$

## Emission Summary

H $\alpha$ broad SNR	19.00
H $\beta$ broad SNR	7.00
H $\gamma$ broad SNR	2.37
AGN frac	0.63
Host frac	0.37
$\log L_{5100, \text{Host}}$	43.76
Fe II/H $\beta$	1.27
Fe II/[O III]	8.38

## Quality Flags

spurious_hab/hbb	0/0
15100	0
balmer	0
balmer_snr	1
hb_width	0
balmer_width	0