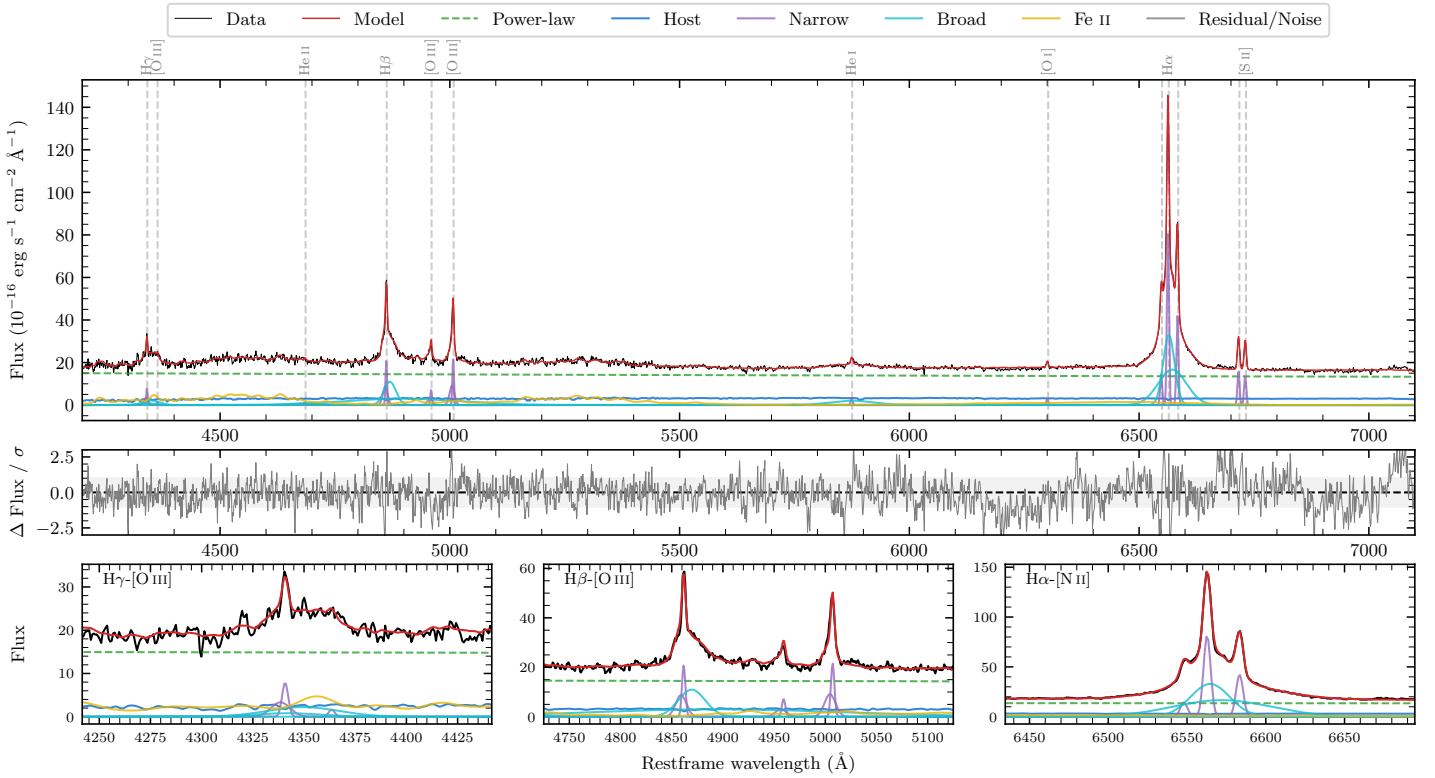
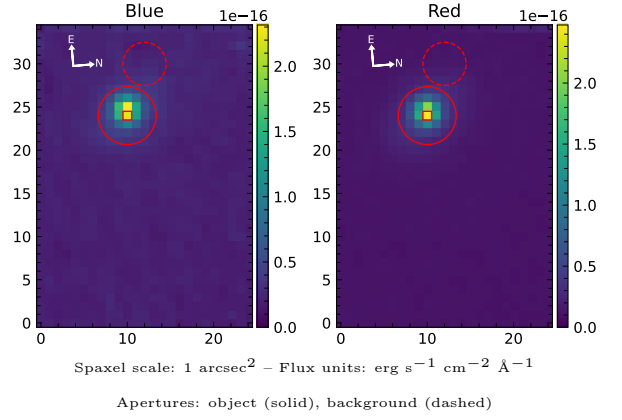


LEDA 16005

Spectrum ID	25126932_sp1	Spectrum type	Sy 1.5
Alt name	g0447207-050814	Quality flag	good
z	0.0447	AGN reference	6dFGS
RA, Dec	71.8363, -5.1372	MW $E(B - V)$	0.045
MJD	60590.71	Power law α_ν	-1.78 ± 0.02
SNR/ \AA B/R	17.6/31.8	$\log L_{5100, \text{AGN}}$	43.54 ± 0.01
Obs airmass	1.13	$\log H\beta_{\text{Br}}/[\text{O III}]$	0.22 ± 0.29
SMSS ID	25126932	$\log M_{L5100}/M_\odot$	7.27 ± 0.03
Neighbour	None $< 15''$	$\log M_{H\alpha}/M_\odot$	7.00 ± 0.03
SMSS $\langle r_6'' \text{ap} \rangle$	15.18 ± 0.02	$\log M_{H\beta}/M_\odot$	7.06 ± 0.15
2MASS K_{ext}	11.43 ± 0.05	$\log M_{[\text{O III}]} / M_\odot$	7.09 ± 0.04



Emission Line Measurements

Line	$\log L$ (erg s^{-1})	FWHM (km s^{-1})	σ (km s^{-1})	EW (\AA)
H γ Narrow	40.53 ± 0.05	312 ± 63	264 ± 27	4.81 ± 0.34
Hγ Broad	40.82 ± 0.06	2828 ± 124	1011 ± 43	9.21 ± 0.64
[O III] 4364	39.48 ± 0.28	246 ± 62	103 ± 25	0.43 ± 0.18
He II Narrow	39.39 ± 0.28	246 ± 62	103 ± 25	0.35 ± 0.16
He II Broad	—	—	—	—
H β Narrow	41.00 ± 0.02	312 ± 63	264 ± 27	14.54 ± 0.30
Hβ Broad	$41.25^{+0.55}_{-0.02}$	1915 ± 53	679 ± 27	26.16 ± 0.45
[O III] 5007	41.03 ± 0.01	312 ± 63	264 ± 27	15.66 ± 0.28
He I Narrow	39.92 ± 0.05	246 ± 62	103 ± 25	1.27 ± 0.10
He I Broad	41.08 ± 0.02	5739 ± 150	2437 ± 63	18.30 ± 0.48
[O I] 6300	39.89 ± 0.05	246 ± 62	103 ± 25	1.21 ± 0.09
H α Narrow	41.36 ± 0.01	246 ± 62	103 ± 25	35.56 ± 0.17
Hα Broad	42.06 ± 0.01	1701 ± 65	849 ± 25	179.33 ± 0.43
[N II] 6585	41.08 ± 0.01	246 ± 62	103 ± 25	18.54 ± 0.16
[S II] 6718	40.65 ± 0.01	246 ± 62	103 ± 25	7.05 ± 0.10
[S II] 6732	40.60 ± 0.01	246 ± 62	103 ± 25	6.21 ± 0.10

Emission Summary

H α broad SNR	43.34
H β broad SNR	9.67
H γ broad SNR	2.72
AGN frac	0.84
Host frac	0.16
$\log L_{5100, \text{Host}}$	42.82
Fe II/H β	—
Fe II/[O III]	—

Quality Flags

spurious_hab/hbb	0/1
15100	0
balmer	0
balmer_snr	1
hb_width	0
balmer_width	0