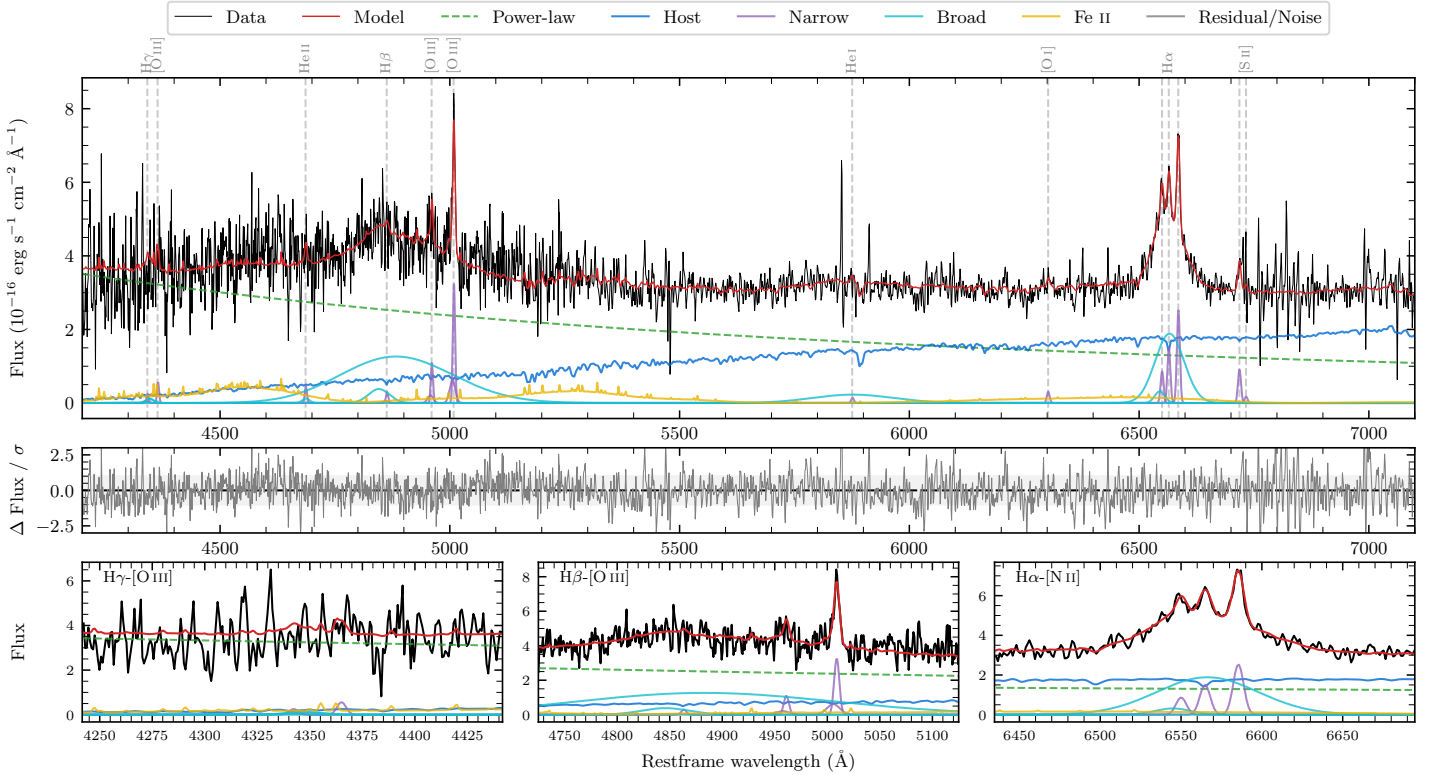
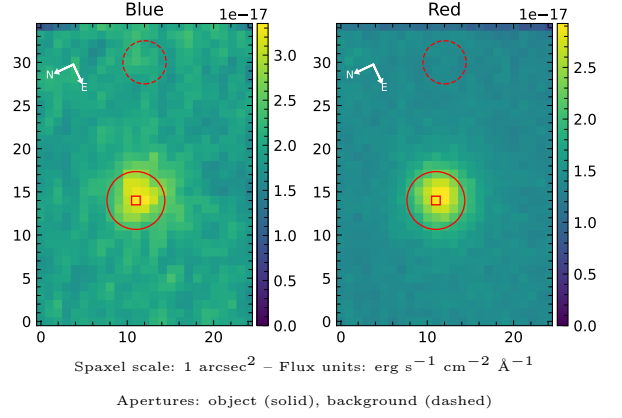


# LEDA 1106641

Spectrum ID	24963611_sp1	Spectrum type	Bad
Alt name	g0428196-015442	Quality flag	bad_all
$z$	0.0765	AGN reference	6dFGS
RA, Dec	67.0815, -1.9116	MW $E(B - V)$	0.072
MJD	60567.77	Power law $\alpha_\nu$	$0.23 \pm 0.16$
SNR/ $\text{\AA}$ B/R	6.1/11.5	$\log L_{5100, \text{AGN}}$	$43.22 \pm 0.01$
Obs airmass	1.16	$\log H\beta_{\text{Br}}/[\text{O III}]$	—
SMSS ID	24963611	$\log M_{L5100}/M_\odot$	—
Neighbour	12.0", <a href="#">1033221145</a>	$\log M_{\text{H}\alpha}/M_\odot$	$7.19 \pm 0.03$
SMSS $\langle r_6^{\text{ap}} \rangle$	$16.81 \pm 0.07$	$\log M_{\text{H}\beta}/M_\odot$	—
2MASS $K_{\text{ext}}$	$13.21 \pm 0.12$	$\log M_{[\text{O III}]} / M_\odot$	—



## Emission Line Measurements

Line	$\log L$ (erg s <sup>-1</sup> )	FWHM (km s <sup>-1</sup> )	$\sigma$ (km s <sup>-1</sup> )	EW (Å)
H $\gamma$ Narrow	—	—	—	—
<b>H<math>\gamma</math> Broad</b>	—	—	—	—
[O III] 4364	$39.67 \pm 0.34$	$349 \pm 63$	$147 \pm 25$	$1.01 \pm 0.58$
He II Narrow	$39.61 \pm 0.36$	$349 \pm 63$	$147 \pm 25$	$1.04 \pm 0.56$
<b>He II Broad</b>	—	—	—	—
H $\beta$ Narrow	$39.62 \pm 0.38$	$385 \pm 67$	$257 \pm 44$	$1.12 \pm 0.94$
<b>H<math>\beta</math> Broad</b>	—	—	—	—
[O III] 5007	$40.66 \pm 0.06$	$385 \pm 67$	$257 \pm 44$	$13.47 \pm 1.07$
He I Narrow	$39.21 \pm 0.40$	$349 \pm 63$	$147 \pm 25$	$0.68 \pm 0.47$
<b>He I Broad</b>	<b><math>40.89 \pm 0.08</math></b>	<b><math>10535 \pm 63</math></b>	<b><math>4474 \pm 25</math></b>	<b><math>32.63 \pm 2.88</math></b>
[O I] 6300	$39.56 \pm 0.20$	$349 \pm 63$	$147 \pm 25$	$1.80 \pm 0.49$
H $\alpha$ Narrow	$40.27 \pm 0.06$	$349 \pm 63$	$147 \pm 25$	$10.08 \pm 0.63$
<b>H<math>\alpha</math> Broad</b>	<b><math>41.38 \pm 0.02</math></b>	<b><math>3385 \pm 69</math></b>	<b><math>1236 \pm 25</math></b>	<b><math>130.50 \pm 2.08</math></b>
[N II] 6585	$40.50 \pm 0.03$	$349 \pm 63$	$147 \pm 25$	$17.19 \pm 0.72$
[S II] 6718	$40.06 \pm 0.07$	$349 \pm 63$	$147 \pm 25$	$6.58 \pm 0.90$
[S II] 6732	$39.34 \pm 0.44$	$349 \pm 63$	$147 \pm 25$	$1.25 \pm 0.96$

## Emission Summary

H $\alpha$ broad SNR	3.38
H $\beta$ broad SNR	0.65
H $\gamma$ broad SNR	0.00
AGN frac	0.76
Host frac	0.24
$\log L_{5100, \text{Host}}$	42.72
Fe II/H $\beta$	—
Fe II/[O III]	—

## Quality Flags

spurious_hab/hbb	0/2
15100	0
balmer	2
balmer_snr	2
hb_width	2
balmer_width	2