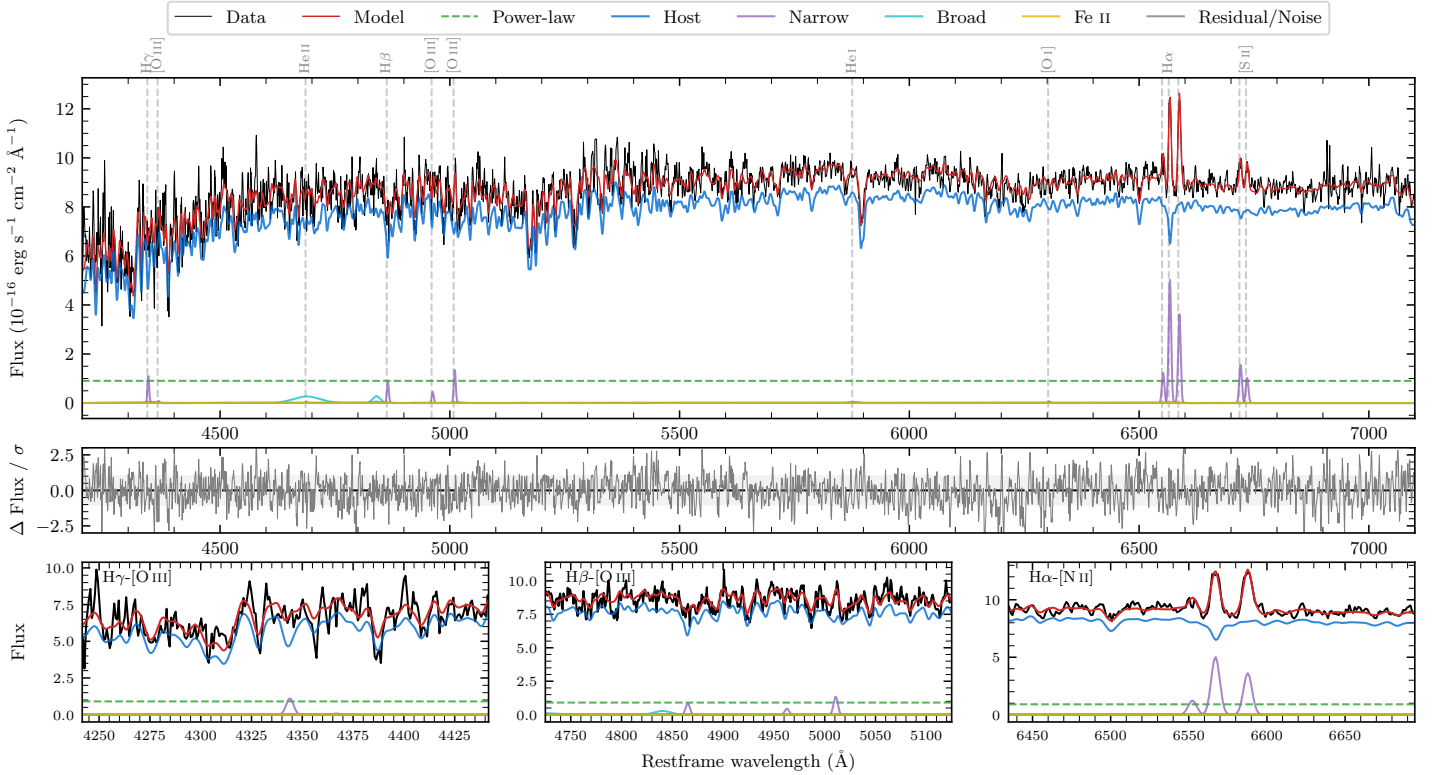
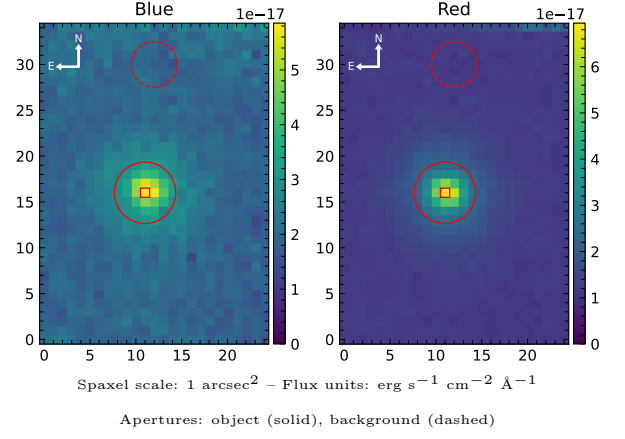


LEDA 3093014

Spectrum ID	24774446_sp2	Spectrum type	Sy 2
Alt name	g0459071-073034	Quality flag	good
z	0.0487	AGN reference	6dFGS
RA, Dec	74.7797, -7.5095	MW $E(B - V)$	0.050
MJD	60589.74	Power law α_ν	-1.99 ± 0.01
SNR/ \AA B/R	14.4/29.6	$\log L_{5100, \text{AGN}}$	42.40 ± 0.10
Obs airmass	1.09	$\log H\beta_{\text{Br}}/[\text{O III}]$	—
SMSS ID	24774446	$\log M_{L5100}/M_\odot$	—
Neighbour	None $< 15''$	$\log M_{\text{H}\alpha}/M_\odot$	—
SMSS $\langle r_6'' \text{ap} \rangle$	16.51 ± 0.02	$\log M_{\text{H}\beta}/M_\odot$	—
2MASS K_{ext}	12.64 ± 0.11	$\log M_{[\text{O III}]} / M_\odot$	—



Emission Line Measurements

Line	$\log L$ (erg s^{-1})	FWHM (km s^{-1})	σ (km s^{-1})	EW (\AA)
H γ Narrow	39.49 ± 0.15	301 ± 63	172 ± 48	6.28 ± 3.08
Hγ Broad	—	—	—	—
[O III] 4364	—	—	—	—
He II Narrow	—	—	—	—
He II Broad	40.04 ± 0.18	4302 ± 62	1827 ± 25	22.35 ± 6.64
H β Narrow	39.44 ± 0.15	301 ± 63	172 ± 48	5.51 ± 2.37
Hβ Broad	—	—	—	—
[O III] 5007	39.65 ± 0.10	301 ± 63	172 ± 48	8.78 ± 2.37
He I Narrow	—	—	—	—
He I Broad	—	—	—	—
[O I] 6300	—	—	—	—
H α Narrow	40.29 ± 0.02	293 ± 62	124 ± 25	39.82 ± 1.07
Hα Broad	—	—	—	—
[N II] 6585	40.15 ± 0.02	293 ± 62	124 ± 25	28.70 ± 1.04
[S II] 6718	39.79 ± 0.04	293 ± 62	124 ± 25	12.60 ± 0.85
[S II] 6732	39.62 ± 0.06	293 ± 62	124 ± 25	8.40 ± 0.87

Emission Summary

H α broad SNR	0.00
H β broad SNR	0.00
H γ broad SNR	0.00
AGN frac	0.11
Host frac	0.89
$\log L_{5100, \text{Host}}$	43.32
Fe II/H β	—
Fe II/[O III]	—

Quality Flags

spurious_hab/hbb	0/0
15100	2
balmer	2
balmer_snr	2
hb_width	2
balmer_width	2