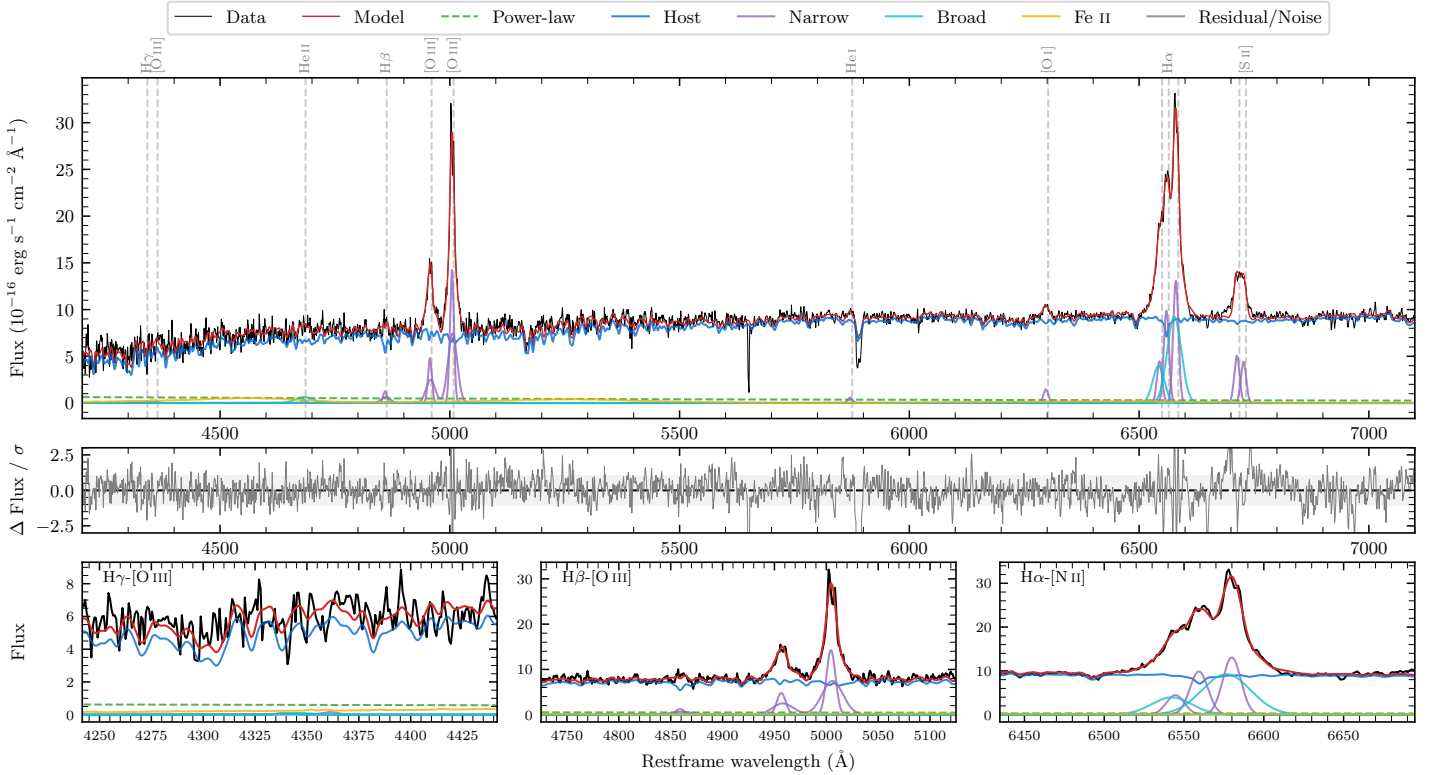
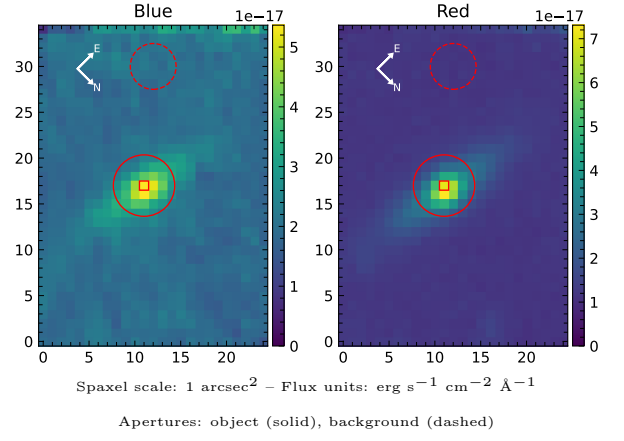


LEDA 1005872

Spectrum ID	24681393_sp1	Spectrum type	Sy 1.8+
Alt name	g0444122-081617	Quality flag	good
z	0.0465	AGN reference	6dFGS
RA, Dec	71.0506, -8.2715	MW $E(B - V)$	0.081
MJD	60590.7	Power law α_ν	-0.29 ± 0.24
SNR/ \AA B/R	9.3/22.0	$\log L_{5100, \text{AGN}}$	42.08 ± 0.13
Obs airmass	1.12	$\log H\beta_{\text{Br}}/[\text{O III}]$	< -0.97
SMSS ID	24681393	$\log M_{L5100}/M_\odot$	—
Neighbour	None $< 15''$	$\log M_{\text{H}\alpha}/M_\odot$	6.90 ± 0.04
SMSS $\langle r_6''_{\text{ap}} \rangle$	16.49 ± 0.03	$\log M_{\text{H}\beta}/M_\odot$	—
2MASS K_{ext}	12.24 ± 0.08	$\log M_{[\text{O III}]} / M_\odot$	—



Emission Line Measurements

Line	$\log L$ (erg s $^{-1}$)	FWHM (km s $^{-1}$)	σ (km s $^{-1}$)	EW (Angstroms)
H γ Narrow	—	—	—	—
Hγ Broad	—	—	—	—
[O III] 4364	—	—	—	—
He II Narrow	39.27 ± 0.47	610 ± 62	258 ± 25	6.85 ± 5.13
He II Broad	40.22 ± 0.17	2841 ± 62	1206 ± 25	60.22 ± 11.89
H β Narrow	40.20 ± 0.11	768 ± 64	479 ± 26	61.90 ± 8.06
Hβ Broad	< 40.30	—	—	—
[O III] 5007	41.27 ± 0.01	768 ± 64	479 ± 26	763.32 ± 9.00
He I Narrow	39.61 ± 0.16	610 ± 62	258 ± 25	21.85 ± 4.28
He I Broad	—	—	—	—
[O I] 6300	40.03 ± 0.05	610 ± 62	258 ± 25	65.66 ± 4.98
H α Narrow	40.88 ± 0.02	610 ± 62	258 ± 25	496.68 ± 7.63
Hα Broad	41.42 ± 0.01	2388 ± 95	881 ± 25	1702.03 ± 11.75
[N II] 6585	41.01 ± 0.01	610 ± 62	258 ± 25	664.02 ± 7.77
[S II] 6718	40.60 ± 0.02	610 ± 62	258 ± 25	271.38 ± 6.02
[S II] 6732	40.55 ± 0.02	610 ± 62	258 ± 25	238.91 ± 5.96

Emission Summary

H α broad SNR	11.18
H β broad SNR	0.40
H γ broad SNR	0.00
AGN frac	0.06
Host frac	0.94
$\log L_{5100, \text{Host}}$	43.28
Fe II/H β	—
Fe II/[O III]	0.40

Quality Flags

spurious_hab/hbb	0/0
15100	2
balmer	2
balmer_snr	2
hb_width	2
balmer_width	2