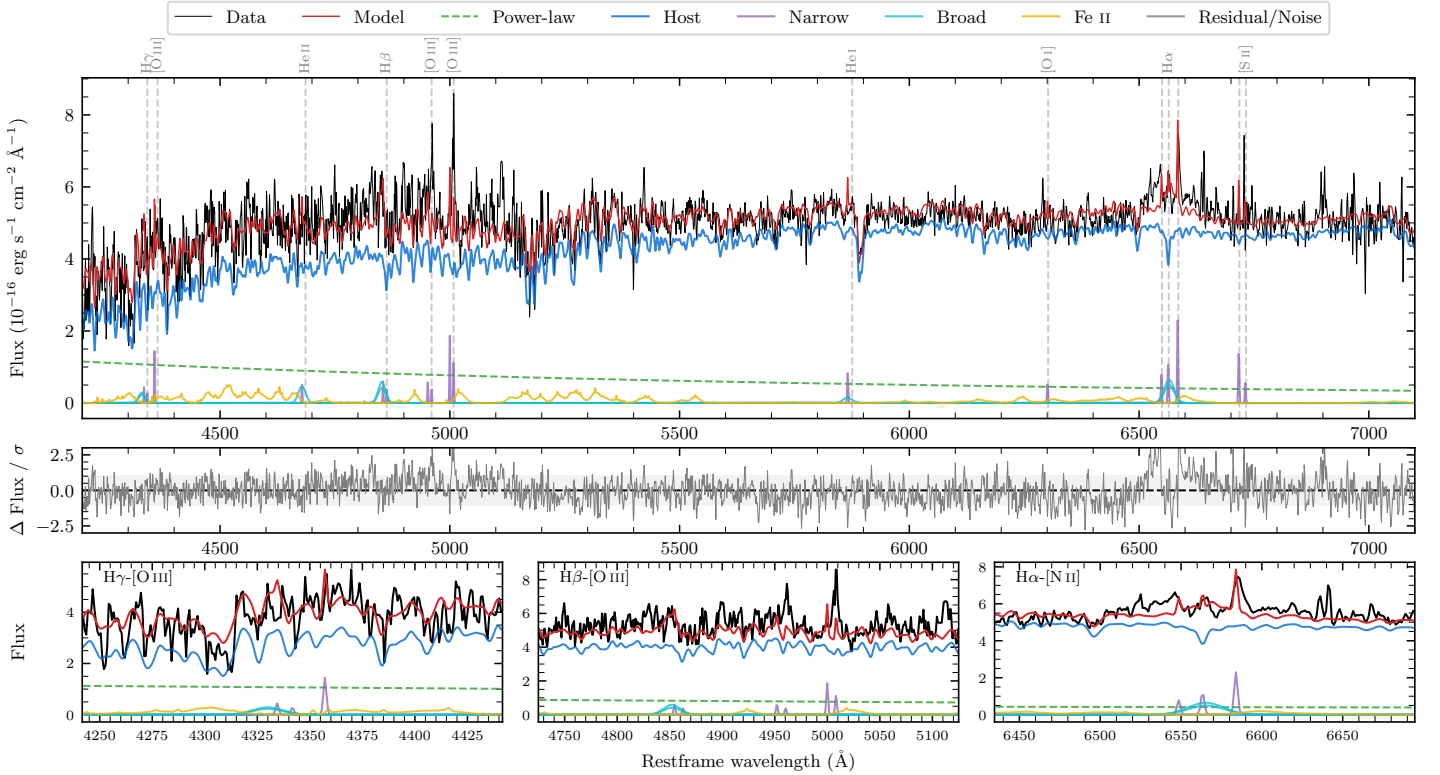
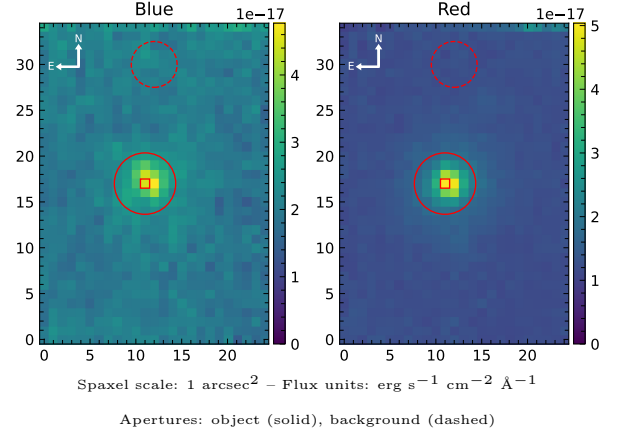


LEDA 1001535

Spectrum ID	24637553_sp1	Spectrum type	Sy 1.2
Alt name	g0443157-083618	Quality flag	good
z	0.0914	AGN reference	6dFGS
RA, Dec	70.8155, -8.6051	MW $E(B - V)$	0.066
MJD	60589.71	Power law α_ν	0.32 ± 0.12
SNR/ \AA B/R	7.4/14.8	$\log L_{5100, \text{AGN}}$	42.89 ± 0.05
Obs airmass	1.10	$\log H\beta_{\text{Br}}/[\text{O III}]$	0.53 ± 0.25
SMSS ID	24637553	$\log M_{L5100}/M_\odot$	6.57 ± 0.04
Neighbour	None $< 15''$	$\log M_{\text{H}\alpha}/M_\odot$	5.95 ± 0.07
SMSS $\langle r_6 \rangle_{\text{ap}}$	16.92 ± 0.10	$\log M_{\text{H}\beta}/M_\odot$	6.39 ± 0.08
2MASS K_{ext}	12.83 ± 0.14	$\log M_{[\text{O III}]} / M_\odot$	6.25 ± 0.12



Emission Line Measurements

Line	$\log L$ (erg s $^{-1}$)	FWHM (km s $^{-1}$)	σ (km s $^{-1}$)	EW (Angstrom)
H γ Narrow	—	—	—	—
Hγ Broad	—	—	—	—
[O III] 4364	39.78 ± 0.28	122 ± 62	50 ± 25	2.72 ± 1.08
He II Narrow	39.37 ± 0.38	122 ± 62	50 ± 25	1.25 ± 1.10
He II Broad	40.32 ± 0.26	1178 ± 62	500 ± 25	11.15 ± 3.65
H β Narrow	39.66 ± 0.36	—	251 ± 26	2.71 ± 1.70
Hβ Broad	40.70 ± 0.15	1178 ± 25	338 ± 25	26.98 ± 3.84
[O III] 5007	40.17 ± 0.20	—	251 ± 26	9.09 ± 2.06
He I Narrow	39.67 ± 0.29	122 ± 62	50 ± 25	4.21 ± 0.99
He I Broad	39.93 ± 0.37	1178 ± 62	500 ± 25	7.62 ± 3.70
[O I] 6300	39.51 ± 0.31	122 ± 62	50 ± 25	3.44 ± 1.57
H α Narrow	39.88 ± 0.13	122 ± 62	50 ± 25	8.84 ± 1.42
Hα Broad	40.85 ± 0.06	1179 ± 62	417 ± 25	84.24 ± 4.50
[N II] 6585	40.16 ± 0.08	122 ± 62	50 ± 25	17.02 ± 1.40
[S II] 6718	39.97 ± 0.18	122 ± 62	50 ± 25	11.52 ± 1.76
[S II] 6732	39.56 ± 0.35	122 ± 62	50 ± 25	4.52 ± 2.55

Emission Summary

H α broad SNR	1.81
H β broad SNR	1.72
H γ broad SNR	0.98
AGN frac	0.16
Host frac	0.83
$\log L_{5100, \text{Host}}$	43.60
Fe II/H β	2.98
Fe II/[O III]	9.51

Quality Flags

spurious_hab/hbb	0/0
15100	2
balmer	1
balmer_snr	2
hb_width	1
balmer_width	1