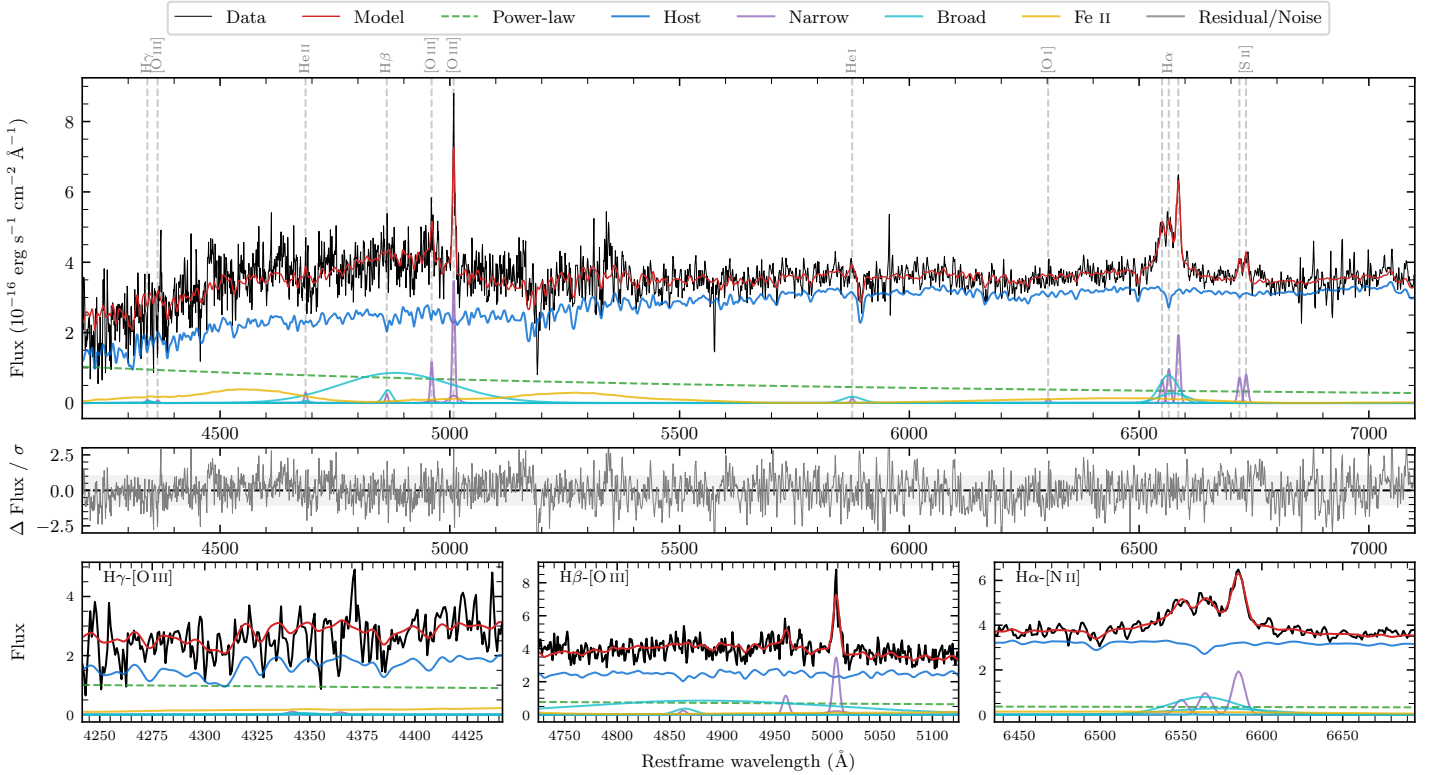
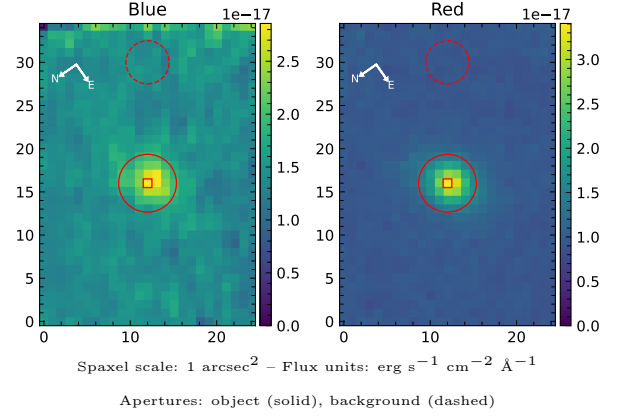


# LEDA 988847

Spectrum ID	24621550_sp1	Spectrum type	Sy 1.5+
Alt name	g0439209-093621	Quality flag	good
$z$	0.0577	AGN reference	6dFGS
RA, Dec	69.8370, -9.6059	MW $E(B - V)$	0.073
MJD	60581.73	Power law $\alpha_\nu$	$0.45 \pm 0.05$
SNR/ $\text{\AA}$ B/R	7.0/16.7	$\log L_{5100, \text{AGN}}$	$42.41 \pm 0.03$
Obs airmass	1.09	$\log H\beta_{\text{Br}}/[\text{O III}]$	$< -0.08$
SMSS ID	24621550	$\log M_{L5100}/M_\odot$	—
Neighbour	None $< 15''$	$\log M_{\text{H}\alpha}/M_\odot$	$6.50 \pm 0.07$
SMSS $\langle r_6''_{\text{ap}} \rangle$	$16.92 \pm 0.04$	$\log M_{\text{H}\beta}/M_\odot$	—
2MASS $K_{\text{ext}}$	$13.46 \pm 0.15$	$\log M_{[\text{O III}]} / M_\odot$	—



## Emission Line Measurements

Line	$\log L$ (erg s $^{-1}$ )	FWHM (km s $^{-1}$ )	$\sigma$ (km s $^{-1}$ )	EW (Angstrom)
H $\gamma$ Narrow	—	—	—	—
<b>H<math>\gamma</math> Broad</b>	—	—	—	—
[O III] 4364	—	—	—	—
He II Narrow	$39.23 \pm 0.37$	$407 \pm 62$	$173 \pm 25$	$2.69 \pm 1.74$
<b>He II Broad</b>	—	—	—	—
H $\beta$ Narrow	$39.27 \pm 0.44$	$424 \pm 64$	$295 \pm 76$	$3.24 \pm 3.17$
<b>H<math>\beta</math> Broad</b>	$< 40.33$	—	—	—
[O III] 5007	$40.41 \pm 0.05$	$424 \pm 64$	$296 \pm 76$	$48.10 \pm 3.56$
He I Narrow	$39.00 \pm 0.37$	$407 \pm 62$	$173 \pm 25$	$2.76 \pm 1.40$
<b>He I Broad</b>	<b><math>39.91 \pm 0.14</math></b>	<b><math>2605 \pm 62</math></b>	<b><math>1106 \pm 25</math></b>	<b><math>22.52 \pm 3.92</math></b>
[O I] 6300	$38.96 \pm 0.37$	$407 \pm 62$	$173 \pm 25$	$3.01 \pm 1.58$
H $\alpha$ Narrow	$39.89 \pm 0.07$	$407 \pm 62$	$173 \pm 25$	$28.11 \pm 2.17$
<b>H<math>\alpha</math> Broad</b>	<b><math>40.72 \pm 0.04</math></b>	<b><math>2441 \pm 136</math></b>	<b><math>972 \pm 63</math></b>	<b><math>192.12 \pm 5.90</math></b>
[N II] 6585	$40.19 \pm 0.03$	$407 \pm 62$	$173 \pm 25$	$57.03 \pm 2.20$
[S II] 6718	$39.78 \pm 0.06$	$407 \pm 62$	$173 \pm 25$	$23.23 \pm 1.99$
[S II] 6732	$39.82 \pm 0.06$	$407 \pm 62$	$173 \pm 25$	$25.71 \pm 1.97$

## Emission Summary

H $\alpha$ broad SNR	2.20
H $\beta$ broad SNR	0.76
H $\gamma$ broad SNR	0.00
AGN frac	0.21
Host frac	0.79
$\log L_{5100, \text{Host}}$	42.99
Fe II/H $\beta$	—
Fe II/[O III]	—

## Quality Flags

spurious_hab/hbb	0/1
15100	2
balmer	2
balmer_snr	2
hb_width	2
balmer_width	2