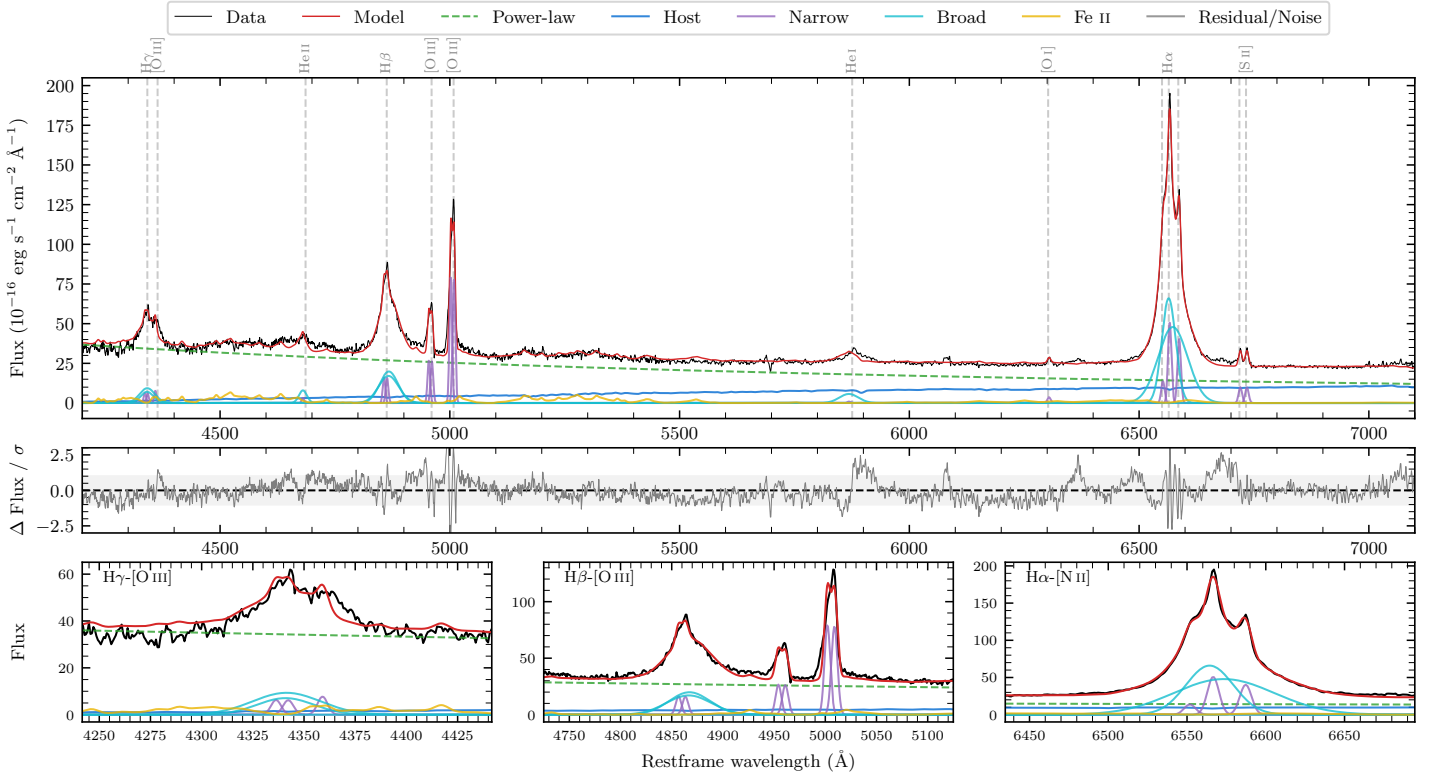
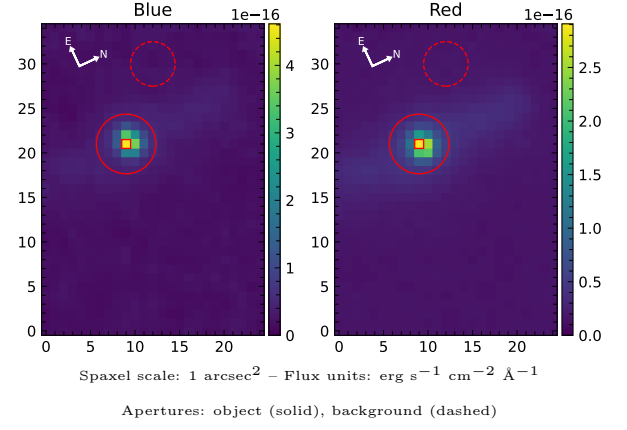


MCG-02-12-045

Spectrum ID	24393139_sp1	Spectrum type	Sy 1.5
Alt name	g0436223-102234	Quality flag	good
z	0.0353	AGN reference	6dFGS
RA, Dec	69.0929, -10.3760	MW $E(B-V)$	0.065
MJD	60566.77	Power law α_ν	0.13 ± 0.15
SNR/ \AA B/R	9.3/14.6	$\log L_{5100, \text{AGN}}$	43.55 ± 0.02
Obs airmass	1.08	$\log H\beta_{\text{Br}}/[\text{O III}]$	0.25 ± 0.02
SMSS ID	24393139	$\log M_{L5100}/M_\odot$	7.69 ± 0.05
Neighbour	None $< 15''$	$\log M_{\text{H}\alpha}/M_\odot$	7.32 ± 0.05
SMSS $\langle r_6''_{\text{ap}} \rangle$	14.81 ± 0.19	$\log M_{\text{H}\beta}/M_\odot$	7.71 ± 0.05
2MASS K_{ext}	10.37 ± 0.03	$\log M_{[\text{O III}]} / M_\odot$	7.75 ± 0.05



Emission Line Measurements

Line	$\log L$ (erg s ⁻¹)	FWHM (km s ⁻¹)	σ (km s ⁻¹)	EW (Å)
H γ Narrow	40.35 ± 0.19	790 ± 67	268 ± 26	2.37 ± 0.40
Hγ Broad	41.27 ± 0.05	2438 ± 224	928 ± 89	19.17 ± 0.91
[O III] 4364	40.12 ± 0.19	399 ± 72	169 ± 29	1.45 ± 0.35
He II Narrow	39.77 ± 0.34	399 ± 72	169 ± 29	0.76 ± 0.33
He II Broad	40.72 ± 0.10	1303 ± 115	553 ± 48	6.13 ± 0.60
H β Narrow	40.82 ± 0.07	790 ± 67	268 ± 26	8.67 ± 0.38
Hβ Broad	41.78 ± 0.02	3091 ± 176	1109 ± 107	74.81 ± 1.01
[O III] 5007	41.53 ± 0.01	790 ± 67	268 ± 26	46.63 ± 0.47
He I Narrow	39.33 ± 0.37	399 ± 72	169 ± 29	0.44 ± 0.28
He I Broad	40.95 ± 0.09	2470 ± 493	1049 ± 209	16.89 ± 0.72
[O I] 6300	39.96 ± 0.12	399 ± 72	169 ± 29	2.16 ± 0.33
H α Narrow	41.14 ± 0.04	399 ± 72	169 ± 29	34.47 ± 0.66
Hα Broad	42.27 ± 0.01	2106 ± 121	973 ± 68	462.06 ± 1.38
[N II] 6585	41.05 ± 0.08	399 ± 72	169 ± 29	27.53 ± 0.63
[S II] 6718	40.43 ± 0.06	399 ± 72	169 ± 29	7.29 ± 0.43
[S II] 6732	40.43 ± 0.05	399 ± 72	169 ± 29	7.21 ± 0.41

Emission Summary

H α broad SNR	31.20
H β broad SNR	10.14
H γ broad SNR	4.53
AGN frac	0.84
Host frac	0.16
$\log L_{5100, \text{Host}}$	42.83
Fe II/H β	0.53
Fe II/[O III]	0.91

Quality Flags

spurious_hab/hbb	0/0
15100	0
balmer	0
balmer_snr	0
hb_width	0
balmer_width	0