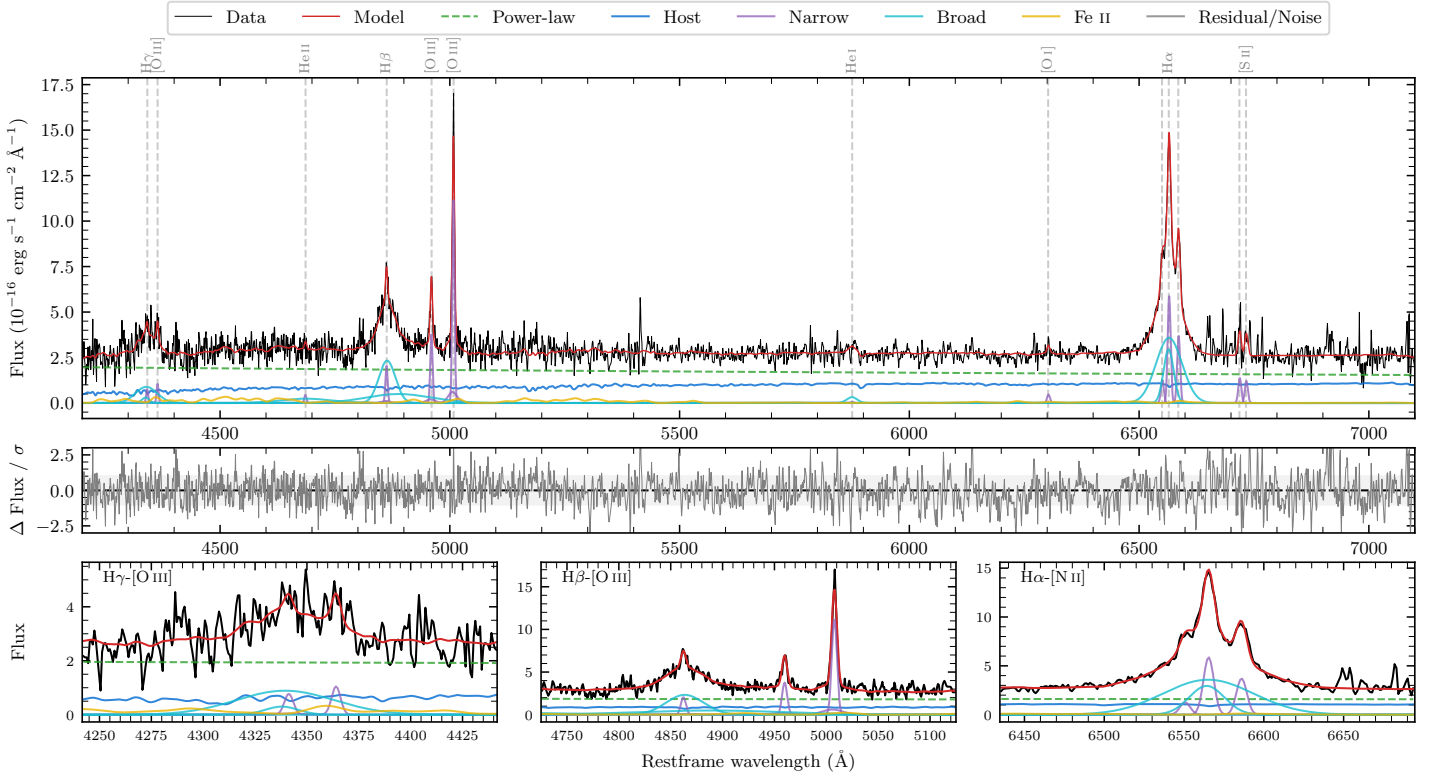
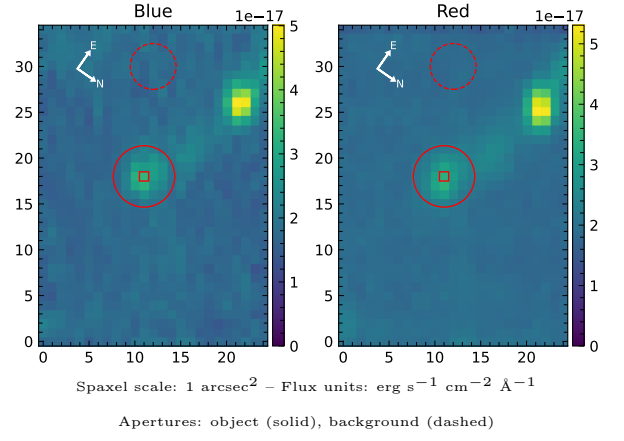


# 2MASS J19560358–2605447

Spectrum ID	235284979_sp1	Spectrum type	Sy 1.2
Alt name	g1956036–260545	Quality flag	good
$z$	0.0889	AGN reference	6dFGS
RA, Dec	299.0149, –26.0958	MW $E(B - V)$	0.101
MJD	60080.76	Power law $\alpha_\nu$	$-1.53 \pm 0.32$
SNR/ $\text{\AA}$ B/R	6.0/8.6	$\log L_{5100, \text{AGN}}$	$43.26 \pm 0.04$
Obs airmass	1.01	$\log H\beta_{\text{Br}}/[\text{O III}]$	$0.36 \pm 0.04$
SMSS ID	235284979	$\log M_{L5100}/M_\odot$	$7.53 \pm 0.04$
Neighbour	6.1", 235284980	$\log M_{\text{H}\alpha}/M_\odot$	$6.97 \pm 0.04$
SMSS $\langle r_{6''}^{\text{ap}} \rangle$	$17.26 \pm 0.10$	$\log M_{\text{H}\beta}/M_\odot$	$7.60 \pm 0.04$
2MASS $K_{\text{ext}}$	$13.76 \pm 0.18$	$\log M_{[\text{O III}]} / M_\odot$	$7.58 \pm 0.04$



## Emission Line Measurements

Line	$\log L$ ( $\text{erg s}^{-1}$ )	FWHM ( $\text{km s}^{-1}$ )	$\sigma$ ( $\text{km s}^{-1}$ )	EW ( $\text{\AA}$ )
H $\gamma$ Narrow	$40.04 \pm 0.22$	$364 \pm 63$	$277 \pm 46$	$2.84 \pm 1.30$
<b>H<math>\gamma</math> Broad</b>	<b><math>41.13 \pm 0.06</math></b>	<b><math>3129 \pm 613</math></b>	<b><math>1313 \pm 103</math></b>	<b><math>32.95 \pm 2.38</math></b>
[O III] 4364	$40.09 \pm 0.16$	$351 \pm 63$	$148 \pm 25$	$3.19 \pm 0.69$
He II Narrow	$39.75 \pm 0.27$	$351 \pm 63$	$148 \pm 25$	$1.50 \pm 0.63$
<b>He II Broad</b>	<b><math>40.85 \pm 0.13</math></b>	<b><math>8361 \pm 212</math></b>	<b><math>3551 \pm 89</math></b>	<b><math>19.53 \pm 3.36</math></b>
H $\beta$ Narrow	$40.51 \pm 0.08$	$364 \pm 63$	$278 \pm 46$	$8.92 \pm 1.34$
<b>H<math>\beta</math> Broad</b>	<b><math>41.62 \pm 0.03</math></b>	<b><math>2956 \pm 122</math></b>	<b><math>1933 \pm 143</math></b>	<b><math>114.43 \pm 4.11</math></b>
[O III] 5007	$41.26 \pm 0.02$	$364 \pm 63$	$278 \pm 45$	$50.92 \pm 1.50$
He I Narrow	–	–	–	–
<b>He I Broad</b>	<b><math>40.32 \pm 0.12</math></b>	<b><math>1354 \pm 128</math></b>	<b><math>575 \pm 53</math></b>	<b><math>5.92 \pm 1.13</math></b>
[O I] 6300	$39.90 \pm 0.17$	$351 \pm 63$	$148 \pm 25$	$2.47 \pm 0.68$
H $\alpha$ Narrow	$41.01 \pm 0.03$	$351 \pm 63$	$148 \pm 25$	$32.61 \pm 0.63$
<b>H<math>\alpha</math> Broad</b>	<b><math>41.86 \pm 0.01</math></b>	<b><math>1877 \pm 91</math></b>	<b><math>925 \pm 25</math></b>	<b><math>228.70 \pm 2.00</math></b>
[N II] 6585	$40.81 \pm 0.03$	$351 \pm 63$	$148 \pm 25$	$20.64 \pm 0.63$
[S II] 6718	$40.40 \pm 0.08$	$351 \pm 63$	$148 \pm 25$	$7.95 \pm 0.81$
[S II] 6732	$40.34 \pm 0.07$	$351 \pm 63$	$148 \pm 25$	$6.95 \pm 0.93$

## Emission Summary

H $\alpha$ broad SNR	13.12
H $\beta$ broad SNR	5.62
H $\gamma$ broad SNR	2.46
AGN frac	0.68
Host frac	0.32
$\log L_{5100, \text{Host}}$	42.93
Fe II/H $\beta$	0.32
Fe II/[O III]	0.72

## Quality Flags

spurious_hab/hbb	0/0
15100	0
balmer	0
balmer_snr	1
hb_width	1
balmer_width	0