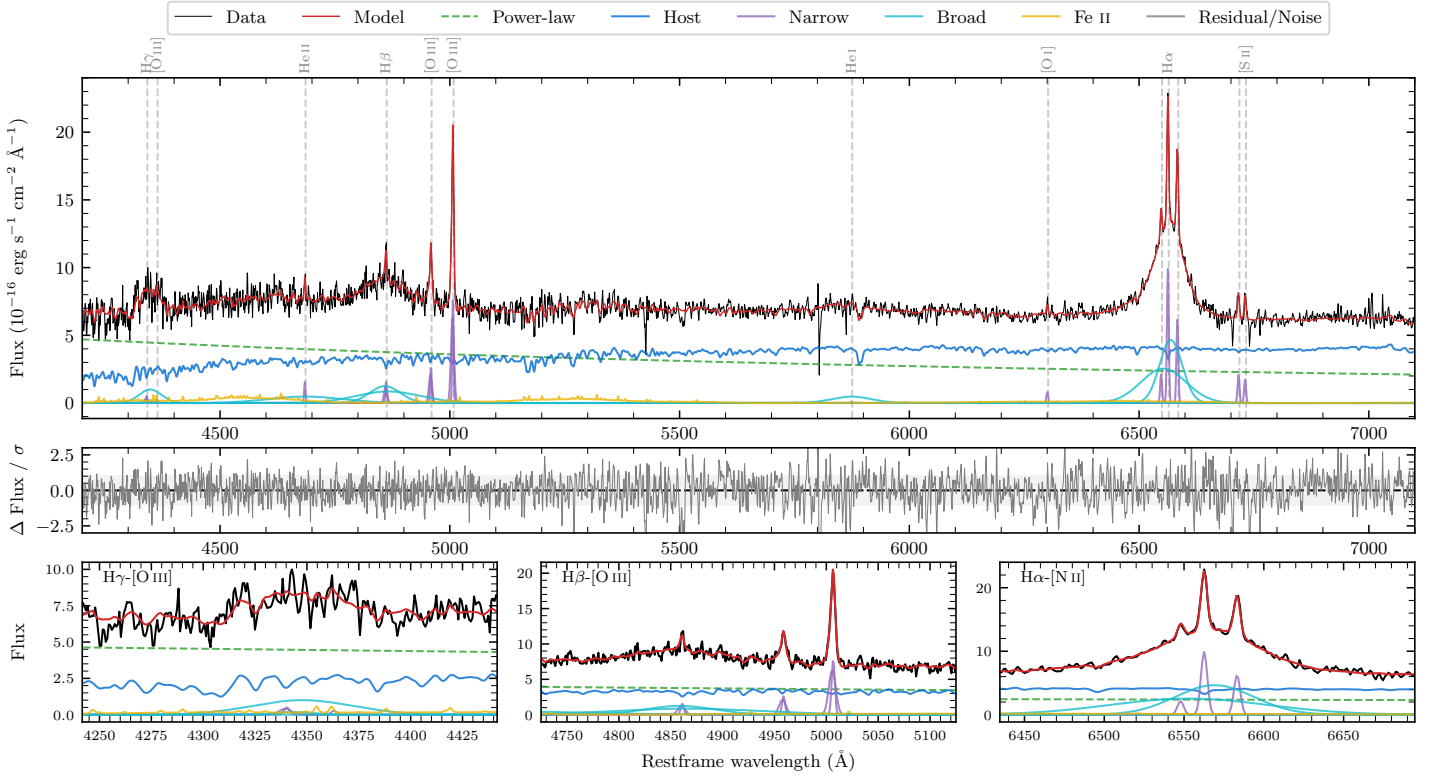
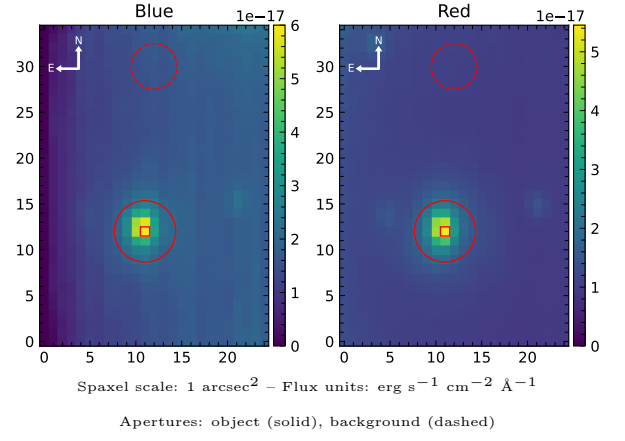


# 2MASS J20104992–3109307

Spectrum ID	234731593_sp1	Spectrum type	Sy 1.2
Alt name	g2010499–310931	Quality flag	good
$z$	0.0853	AGN reference	6dFGS
RA, Dec	302.7081, –31.1586	MW $E(B - V)$	0.117
MJD	59732.72	Power law $\alpha_\nu$	$-0.47 \pm 0.20$
SNR/Å B/R	12.2/20.8	$\log L_{5100, \text{AGN}}$	$43.51 \pm 0.03$
Obs airmass	1.00	$\log H\beta_{\text{Br}}/[\text{O III}]$	$0.48 \pm 0.03$
SMSS ID	234731593	$\log M_{L5100}/M_\odot$	$8.29 \pm 0.07$
Neighbour	10.7", 1274887223	$\log M_{\text{H}\alpha}/M_\odot$	$7.59 \pm 0.02$
SMSS $\langle r_6''_{\text{ap}} \rangle$	$17.17 \pm 0.12$	$\log M_{\text{H}\beta}/M_\odot$	$8.29 \pm 0.07$
2MASS $K_{\text{ext}}$	$13.11 \pm 0.16$	$\log M_{[\text{O III}]} / M_\odot$	$8.21 \pm 0.07$



## Emission Line Measurements

Line	$\log L$ ( $\text{erg s}^{-1}$ )	FWHM ( $\text{km s}^{-1}$ )	$\sigma$ ( $\text{km s}^{-1}$ )	EW ( $\text{\AA}$ )
H $\gamma$ Narrow	$39.96 \pm 0.26$	$300 \pm 63$	$174 \pm 27$	$1.13 \pm 0.45$
<b>H<math>\gamma</math> Broad</b>	<b><math>41.13 \pm 0.07</math></b>	<b><math>3521 \pm 458</math></b>	<b><math>1387 \pm 84</math></b>	<b><math>15.72 \pm 1.36</math></b>
[O III] 4364	–	–	–	–
He II Narrow	$40.05 \pm 0.13$	$219 \pm 63$	$91 \pm 25$	$1.54 \pm 0.31$
<b>He II Broad</b>	<b><math>41.29 \pm 0.08</math></b>	<b><math>12204 \pm 194</math></b>	<b><math>5183 \pm 82</math></b>	<b><math>26.63 \pm 2.42</math></b>
H $\beta$ Narrow	$40.51 \pm 0.07$	$300 \pm 63$	$174 \pm 27$	$4.67 \pm 0.50$
<b>H<math>\beta</math> Broad</b>	<b><math>41.70 \pm 0.03</math></b>	<b><math>6242 \pm 451</math></b>	<b><math>2842 \pm 163</math></b>	<b><math>73.77 \pm 2.48</math></b>
[O III] 5007	$41.22 \pm 0.02$	$300 \pm 63$	$174 \pm 27$	$25.02 \pm 0.56$
He I Narrow	–	–	–	–
<b>He I Broad</b>	<b><math>41.01 \pm 0.05</math></b>	<b><math>5139 \pm 195</math></b>	<b><math>2182 \pm 82</math></b>	<b><math>19.75 \pm 1.23</math></b>
[O I] 6300	$39.89 \pm 0.11$	$219 \pm 63$	$91 \pm 25$	$1.68 \pm 0.27$
H $\alpha$ Narrow	$40.99 \pm 0.01$	$219 \pm 63$	$91 \pm 25$	$22.69 \pm 0.33$
<b>H<math>\alpha</math> Broad</b>	<b><math>42.08 \pm 0.01</math></b>	<b><math>3299 \pm 79</math></b>	<b><math>1447 \pm 32</math></b>	<b><math>275.19 \pm 1.65</math></b>
[N II] 6585	$40.79 \pm 0.02$	$219 \pm 63$	$91 \pm 25$	$14.41 \pm 0.33$
[S II] 6718	$40.32 \pm 0.05$	$219 \pm 63$	$91 \pm 25$	$5.03 \pm 0.39$
[S II] 6732	$40.25 \pm 0.06$	$219 \pm 63$	$91 \pm 25$	$4.25 \pm 0.38$

## Emission Summary

H $\alpha$ broad SNR	12.24
H $\beta$ broad SNR	3.62
H $\gamma$ broad SNR	2.12
AGN frac	0.53
Host frac	0.47
$\log L_{5100, \text{Host}}$	43.46
Fe II/H $\beta$	0.40
Fe II/[O III]	1.23

## Quality Flags

spurious_hab/hbb	0/0
15100	0
balmer	0
balmer_snr	1
hb_width	0
balmer_width	1