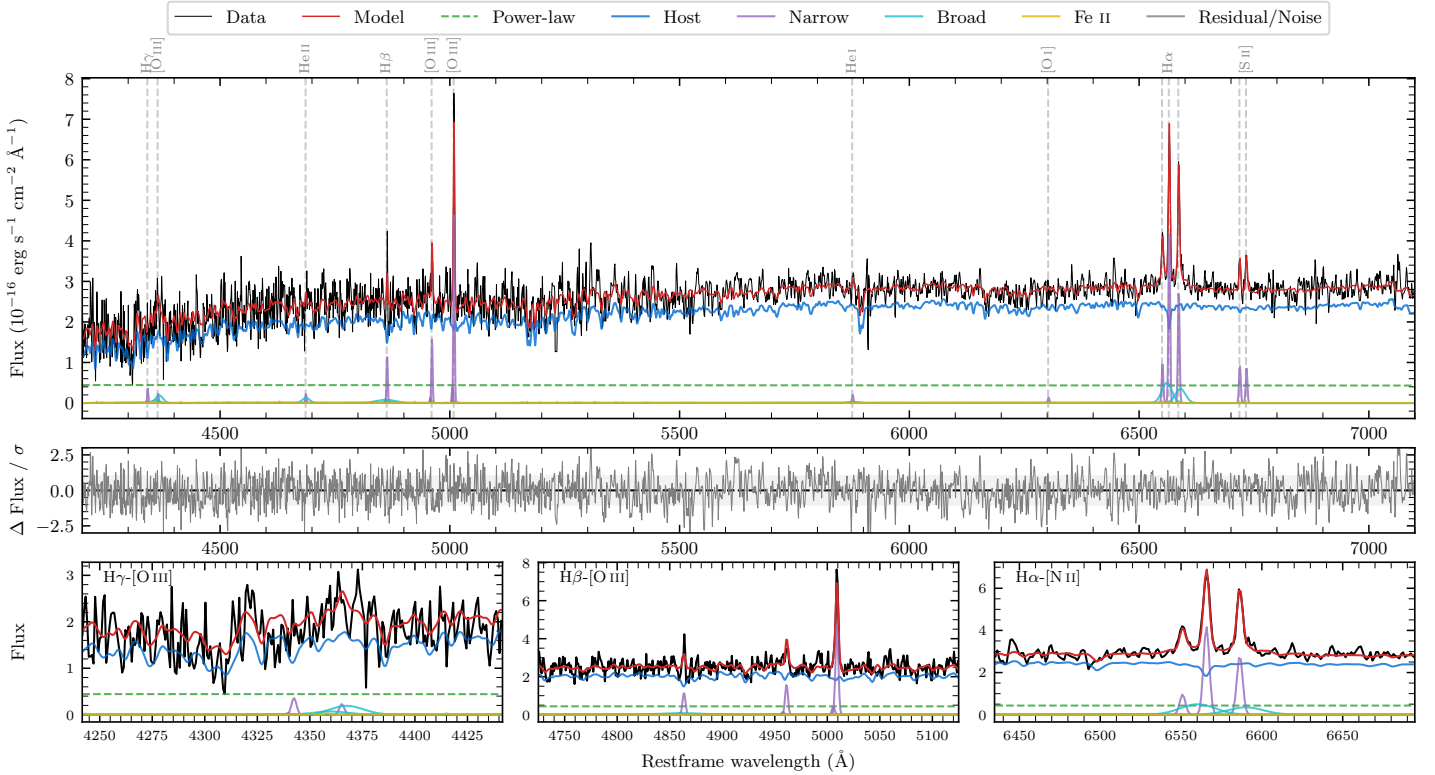
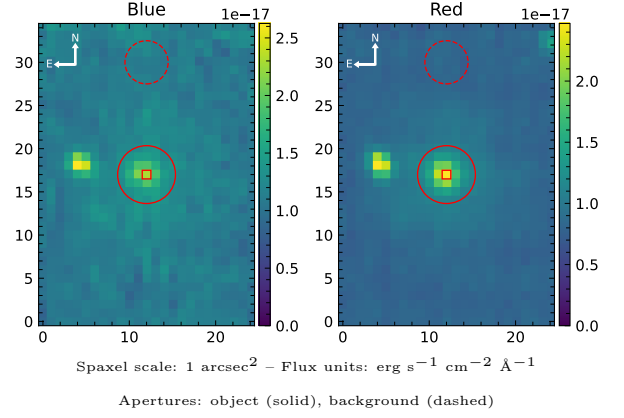


LEDA 706044

Spectrum ID	234719175_sp1	Spectrum type	Sy 1.5+
Alt name	g2017256-312149	Quality flag	good
z	0.0669	AGN reference	6dFGS
RA, Dec	304.3565, -31.3638	MW $E(B-V)$	0.111
MJD	60165.52	Power law α_ν	-1.95 ± 0.07
SNR/ \AA B/R	7.1/13.6	$\log L_{5100, \text{AGN}}$	42.39 ± 0.08
Obs airmass	1.01	$\log H\beta_{\text{Br}}/[\text{O III}]$	< -0.03
SMSS ID	234719175	$\log M_{L5100}/M_\odot$	—
Neighbour	7.1", 234719176	$\log M_{\text{H}\alpha}/M_\odot$	6.28 ± 0.09
SMSS $\langle r_{6'' \text{ap}} \rangle$	nan \pm nan	$\log M_{\text{H}\beta}/M_\odot$	—
2MASS K_{ext}	12.77 ± 0.16	$\log M_{[\text{O III}]} / M_\odot$	—



Emission Line Measurements

Line	$\log L$ (erg s ⁻¹)	FWHM (km s ⁻¹)	σ (km s ⁻¹)	EW (Å)
H γ Narrow	39.13 ± 0.30	204 ± 63	99 ± 27	2.82 ± 1.64
Hγ Broad	—	—	—	—
[O III] 4364	38.90 ± 0.44	203 ± 62	82 ± 25	1.66 ± 1.48
He II Narrow	38.91 ± 0.42	203 ± 62	82 ± 25	1.74 ± 1.38
He II Broad	39.48 ± 0.38	1205 ± 62	511 ± 25	6.34 ± 3.42
H β Narrow	39.69 ± 0.13	204 ± 63	99 ± 27	10.30 ± 1.81
Hβ Broad	< 40.27	—	—	—
[O III] 5007	40.31 ± 0.03	204 ± 63	99 ± 27	42.84 ± 1.89
He I Narrow	38.97 ± 0.35	203 ± 62	82 ± 25	2.01 ± 0.99
He I Broad	—	—	—	—
[O I] 6300	38.83 ± 0.41	203 ± 62	82 ± 25	1.47 ± 0.94
H α Narrow	40.33 ± 0.02	203 ± 62	82 ± 25	46.53 ± 1.19
Hα Broad	40.43 ± 0.06	2336 ± 140	745 ± 25	57.30 ± 3.05
[N II] 6585	40.16 ± 0.03	203 ± 62	82 ± 25	31.25 ± 1.10
[S II] 6718	39.68 ± 0.07	203 ± 62	82 ± 25	10.42 ± 1.02
[S II] 6732	39.65 ± 0.07	203 ± 62	82 ± 25	9.73 ± 1.08

Emission Summary

H α broad SNR	1.52
H β broad SNR	0.45
H γ broad SNR	0.00
AGN frac	0.19
Host frac	0.81
$\log L_{5100, \text{Host}}$	43.02
Fe II/H β	—
Fe II/[O III]	—

Quality Flags

spurious_hab/hbb	0/0
15100	2
balmer	2
balmer_snr	2
hb_width	2
balmer_width	2