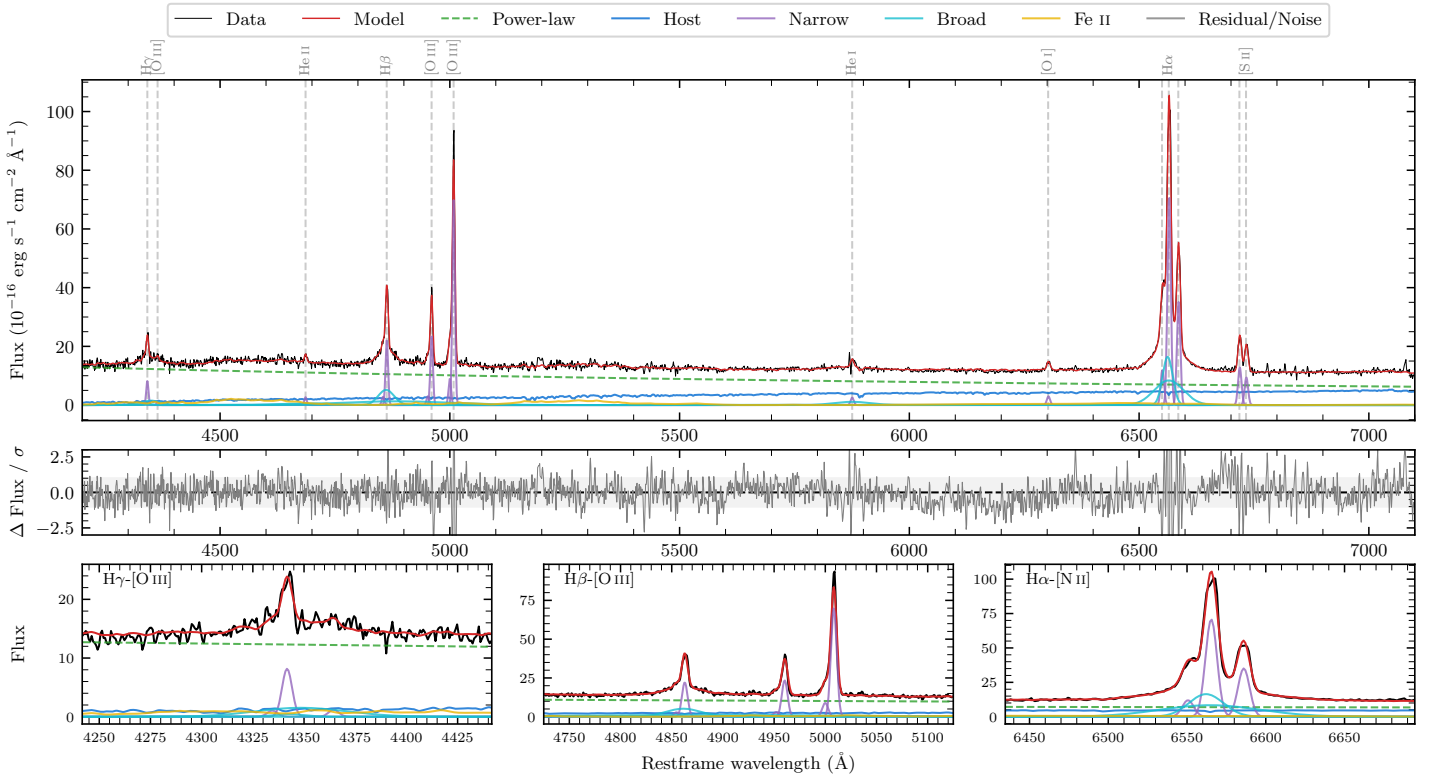
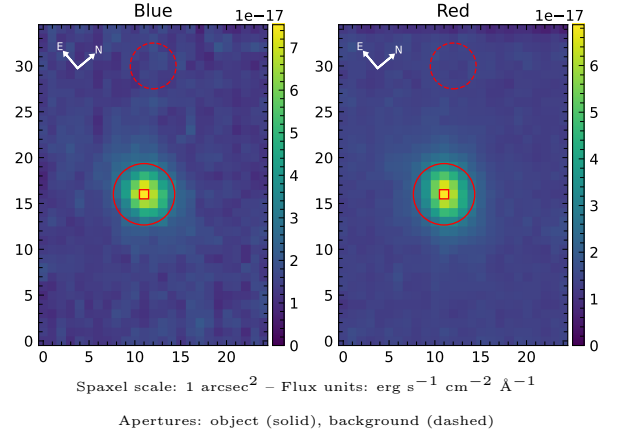


# IRAS 20562–3159

Spectrum ID	234201192_sp1	Spectrum type	Sy 1.5
Alt name	g2059207–314735	Quality flag	good
$z$	0.0734	AGN reference	6dFGS
RA, Dec	314.8364, –31.7930	MW $E(B - V)$	0.085
MJD	60083.77	Power law $\alpha_\nu$	$-0.62 \pm 0.10$
SNR/ $\text{\AA}$ B/R	14.2/20.0	$\log L_{5100, \text{AGN}}$	$43.82 \pm 0.01$
Obs airmass	1.01	$\log H\beta_{\text{Br}}/[\text{O III}]$	$-0.40 \pm 0.23$
SMSS ID	234201192	$\log M_{L5100}/M_\odot$	$7.62 \pm 0.03$
Neighbour	14.0", 234201207	$\log M_{\text{H}\alpha}/M_\odot$	$7.00 \pm 0.04$
SMSS $\langle r_6^{\text{ap}} \rangle$	$16.07 \pm 0.06$	$\log M_{\text{H}\beta}/M_\odot$	$7.39 \pm 0.12$
2MASS $K_{\text{ext}}$	$12.10 \pm 0.06$	$\log M_{[\text{O III}]} / M_\odot$	$7.74 \pm 0.03$



## Emission Line Measurements

Line	$\log L$ (erg s <sup>-1</sup> )	FWHM (km s <sup>-1</sup> )	$\sigma$ (km s <sup>-1</sup> )	EW (Å)
H $\gamma$ Narrow	$40.90 \pm 0.05$	$405 \pm 63$	$232 \pm 25$	$4.93 \pm 0.27$
<b>H<math>\gamma</math> Broad</b>	<b><math>41.14 \pm 0.08</math></b>	<b><math>3057 \pm 549</math></b>	<b><math>1238 \pm 87</math></b>	<b><math>8.15 \pm 0.71</math></b>
[O III] 4364	$40.02 \pm 0.26$	$397 \pm 62$	$169 \pm 25$	$0.65 \pm 0.23$
He II Narrow	$40.40 \pm 0.09$	$397 \pm 62$	$169 \pm 25$	$1.71 \pm 0.22$
<b>He II Broad</b>	–	–	–	–
H $\beta$ Narrow	$41.38 \pm 0.02$	$405 \pm 63$	$232 \pm 25$	$17.48 \pm 0.30$
<b>H<math>\beta</math> Broad</b>	<b><math>41.50^{+0.44}_{-0.03}</math></b>	<b><math>2480 \pm 85</math></b>	<b><math>924 \pm 37</math></b>	<b><math>22.61 \pm 0.64</math></b>
[O III] 5007	$41.90 \pm 0.01$	$405 \pm 63$	$232 \pm 25$	$59.09 \pm 0.35$
He I Narrow	$40.47 \pm 0.07$	$397 \pm 62$	$169 \pm 25$	$2.79 \pm 0.28$
<b>He I Broad</b>	<b><math>41.18 \pm 0.05</math></b>	<b><math>4654 \pm 170</math></b>	<b><math>1977 \pm 72</math></b>	<b><math>14.24 \pm 0.81</math></b>
[O I] 6300	$40.57 \pm 0.04$	$397 \pm 62$	$169 \pm 25$	$3.83 \pm 0.23$
H $\alpha$ Narrow	$41.97 \pm 0.01$	$397 \pm 62$	$169 \pm 25$	$101.09 \pm 0.40$
<b>H<math>\alpha</math> Broad</b>	<b><math>42.20 \pm 0.01</math></b>	<b><math>1533 \pm 66</math></b>	<b><math>854 \pm 25</math></b>	<b><math>172.45 \pm 0.87</math></b>
[N II] 6585	$41.66 \pm 0.01$	$397 \pm 62$	$169 \pm 25$	$50.49 \pm 0.36$
[S II] 6718	$41.23 \pm 0.01$	$397 \pm 62$	$169 \pm 25$	$19.34 \pm 0.30$
[S II] 6732	$41.10 \pm 0.01$	$397 \pm 62$	$169 \pm 25$	$14.28 \pm 0.35$

## Emission Summary

H $\alpha$ broad SNR	25.04
H $\beta$ broad SNR	5.23
H $\gamma$ broad SNR	2.04
AGN frac	0.81
Host frac	0.19
$\log L_{5100, \text{Host}}$	43.19
Fe II/H $\beta$	–
Fe II/[O III]	–

## Quality Flags

spurious_hab/hbb	0/1
15100	0
balmer	0
balmer_snr	1
hb_width	0
balmer_width	0