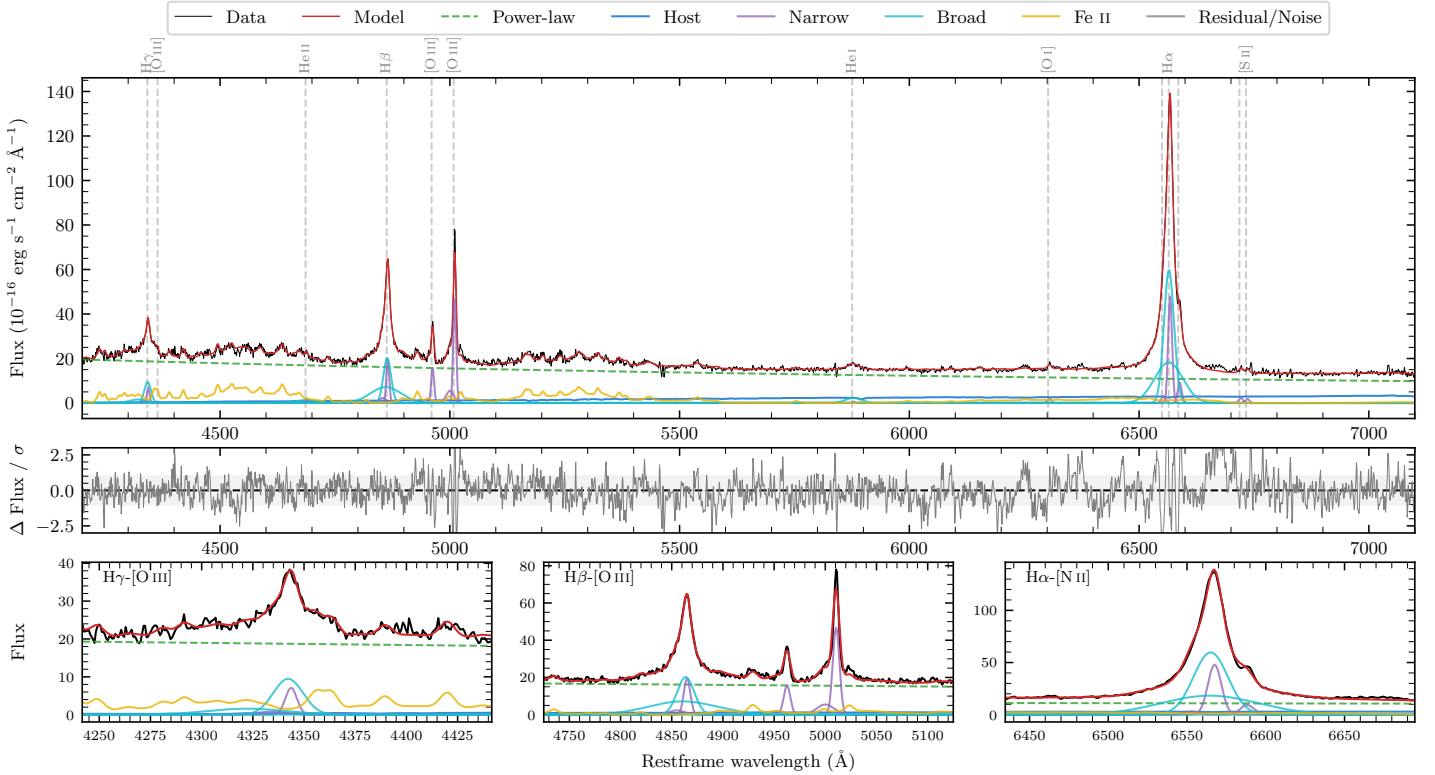
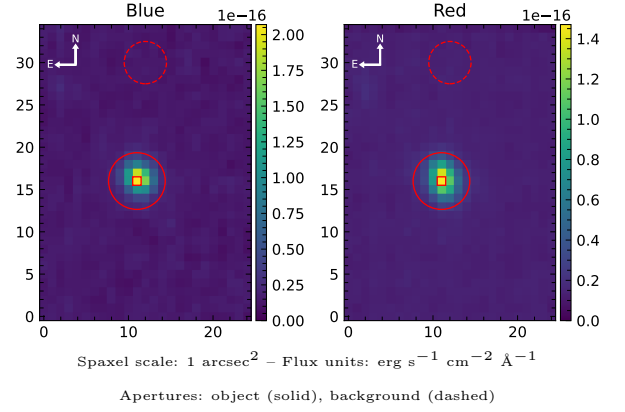


LEDA 3096589

Spectrum ID	234143384_sp1	Spectrum type	Sy 1.2
Alt name	g2039272-301852	Quality flag	good
z	0.0796	AGN reference	6dFGS
RA, Dec	309.8633, -30.3145	MW $E(B-V)$	0.060
MJD	60082.74	Power law α_ν	-0.69 ± 0.07
SNR/ \AA B/R	16.5/20.7	$\log L_{5100, \text{AGN}}$	44.08 ± 0.01
Obs airmass	1.04	$\log H\beta_{\text{Br}}/[\text{O III}]$	0.32 ± 0.01
SMSS ID	234143384	$\log M_{L5100}/M_\odot$	7.30 ± 0.03
Neighbour	14.0", 234143625	$\log M_{\text{H}\alpha}/M_\odot$	7.22 ± 0.05
SMSS $\langle r_6''_{\text{ap}} \rangle$	15.78 ± 0.06	$\log M_{\text{H}\beta}/M_\odot$	7.30 ± 0.03
2MASS K_{ext}	nan \pm nan	$\log M_{[\text{O III}]} / M_\odot$	7.32 ± 0.03



Emission Line Measurements

Line	$\log L$ (erg s^{-1})	FWHM (km s^{-1})	σ (km s^{-1})	EW (\AA)
H γ Narrow	41.04 ± 0.10	481 ± 63	398 ± 26	3.77 ± 0.34
Hγ Broad	41.62 ± 0.04	1271 ± 70	646 ± 51	14.31 ± 0.56
[O III] 4364	39.75 ± 0.43	461 ± 63	195 ± 25	0.20 ± 0.20
He II Narrow	40.40 ± 0.17	461 ± 63	195 ± 25	0.96 ± 0.21
He II Broad	41.13 ± 0.09	3568 ± 129	1515 ± 54	5.15 ± 0.58
H β Narrow	41.53 ± 0.04	481 ± 63	398 ± 26	13.48 ± 0.37
Hβ Broad	42.23 ± 0.01	1512 ± 52	1087 ± 31	68.30 ± 0.75
[O III] 5007	41.92 ± 0.01	481 ± 63	398 ± 26	34.53 ± 0.40
He I Narrow	39.98 ± 0.29	461 ± 63	195 ± 25	0.49 ± 0.18
He I Broad	41.22 ± 0.04	2105 ± 86	894 ± 35	8.71 ± 0.44
[O I] 6300	40.51 ± 0.07	461 ± 63	195 ± 25	1.85 ± 0.19
H α Narrow	41.93 ± 0.01	461 ± 63	195 ± 25	51.00 ± 0.37
Hα Broad	42.70 ± 0.01	1389 ± 63	709 ± 25	301.74 ± 0.71
[N II] 6585	41.22 ± 0.03	461 ± 63	195 ± 25	9.92 ± 0.31
[S II] 6718	40.63 ± 0.07	461 ± 63	195 ± 25	2.60 ± 0.29
[S II] 6732	40.53 ± 0.08	461 ± 63	195 ± 25	2.10 ± 0.29

Emission Summary

H α broad SNR	63.02
H β broad SNR	22.12
H γ broad SNR	8.39
AGN frac	0.92
Host frac	0.08
$\log L_{5100, \text{Host}}$	42.99
Fe II/H β	1.54
Fe II/[O III]	3.17

Quality Flags

spurious_hab/hbb	0/0
15100	0
balmer	0
balmer_snr	0
hb_width	2
balmer_width	0