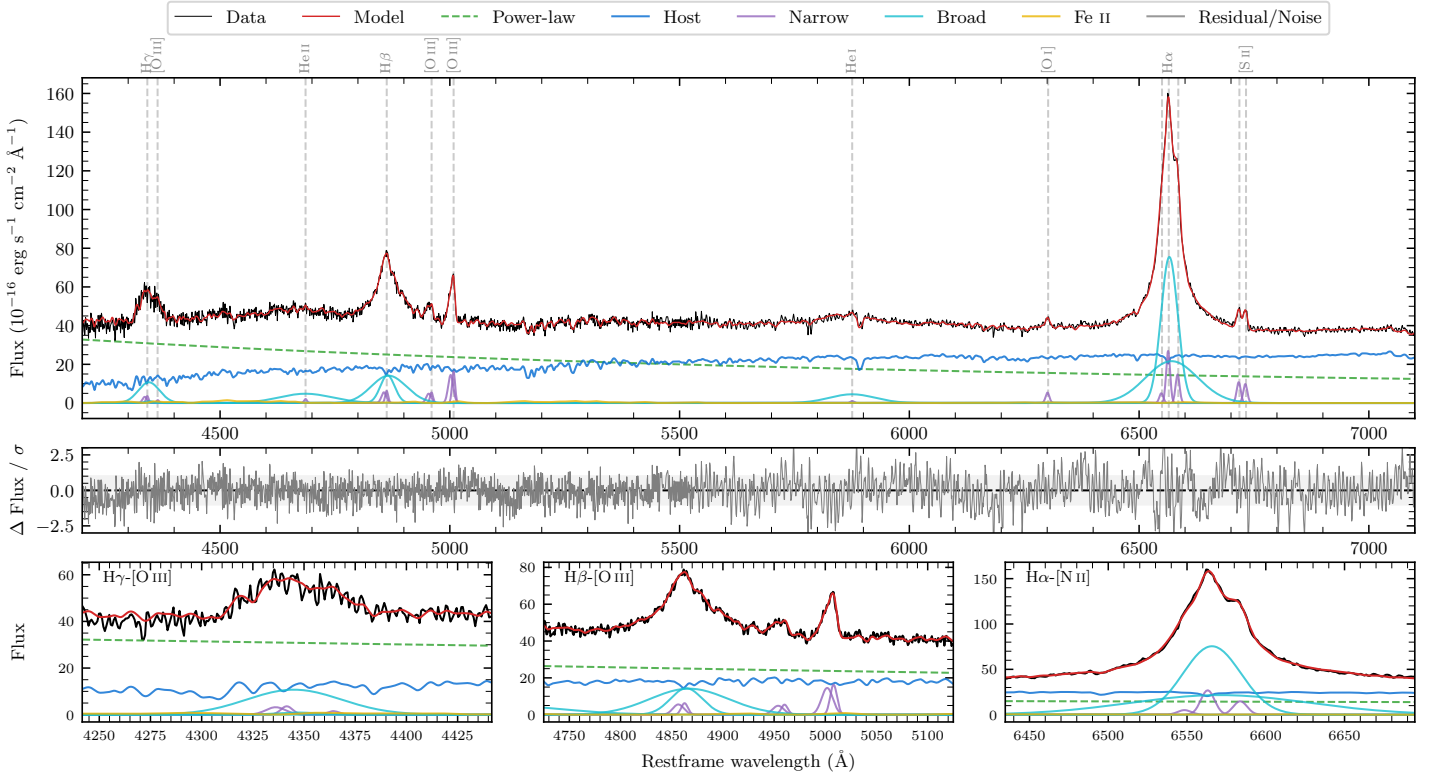
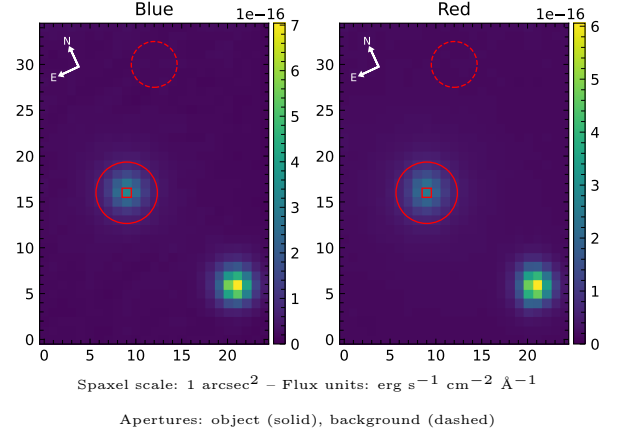


LEDA 64989

Spectrum ID	234112050_sp1	Spectrum type	Sy 1.0
Alt name	g2034314-303729	Quality flag	good
z	0.0194	AGN reference	6dFGS
RA, Dec	308.6306, -30.6246	MW $E(B - V)$	0.059
MJD	59078.42	Power law α_ν	-0.16 ± 0.09
SNR/ \AA B/R	22.7/41.8	$\log L_{5100, \text{AGN}}$	43.00 ± 0.02
Obs airmass	1.26	$\log H\beta_{\text{Br}}/[\text{O III}]$	0.75 ± 0.02
SMSS ID	234112050	$\log M_{L5100}/M_\odot$	7.51 ± 0.04
Neighbour	None $< 15''$	$\log M_{\text{H}\alpha}/M_\odot$	7.09 ± 0.03
SMSS $\langle r_6''_{\text{ap}} \rangle$	14.50 ± 0.05	$\log M_{\text{H}\beta}/M_\odot$	7.52 ± 0.05
2MASS K_{ext}	10.26 ± 0.03	$\log M_{[\text{O III}]} / M_\odot$	7.29 ± 0.06



Emission Line Measurements

Line	$\log L$ (erg s^{-1})	FWHM (km s^{-1})	σ (km s^{-1})	EW (\AA)
H γ Narrow	39.75 ± 0.13	784 ± 72	339 ± 28	2.13 ± 0.30
Hγ Broad	40.76 ± 0.03	3556 ± 188	1345 ± 49	21.32 ± 0.66
[O III] 4364	38.99 ± 0.35	468 ± 63	198 ± 25	0.37 ± 0.22
He II Narrow	39.16 ± 0.21	468 ± 63	198 ± 25	0.63 ± 0.20
He II Broad	40.80 ± 0.03	8718 ± 347	3702 ± 147	26.57 ± 0.89
H β Narrow	40.04 ± 0.07	784 ± 72	339 ± 28	5.11 ± 0.28
Hβ Broad	41.22 ± 0.01	3294 ± 140	1614 ± 45	77.92 ± 0.73
[O III] 5007	40.47 ± 0.01	784 ± 72	339 ± 28	14.47 ± 0.28
He I Narrow	38.95 ± 0.20	468 ± 63	198 ± 25	0.58 ± 0.16
He I Broad	40.69 ± 0.02	5919 ± 153	2513 ± 64	32.27 ± 0.73
[O I] 6300	39.70 ± 0.04	468 ± 63	198 ± 25	3.72 ± 0.20
H α Narrow	40.41 ± 0.02	468 ± 63	198 ± 25	20.74 ± 0.28
Hα Broad	41.76 ± 0.01	2312 ± 64	1277 ± 25	463.34 ± 0.86
[N II] 6585	40.15 ± 0.03	468 ± 63	198 ± 25	11.52 ± 0.27
[S II] 6718	40.02 ± 0.02	468 ± 63	198 ± 25	8.88 ± 0.24
[S II] 6732	39.98 ± 0.02	468 ± 63	198 ± 25	8.14 ± 0.26

Emission Summary

H α broad SNR	48.96
H β broad SNR	14.36
H γ broad SNR	6.00
AGN frac	0.57
Host frac	0.43
$\log L_{5100, \text{Host}}$	42.88
Fe II/H β	0.13
Fe II/[O III]	0.74

Quality Flags

spurious_hab/hbb	0/0
15100	0
balmer	0
balmer_snr	0
hb_width	0
balmer_width	0