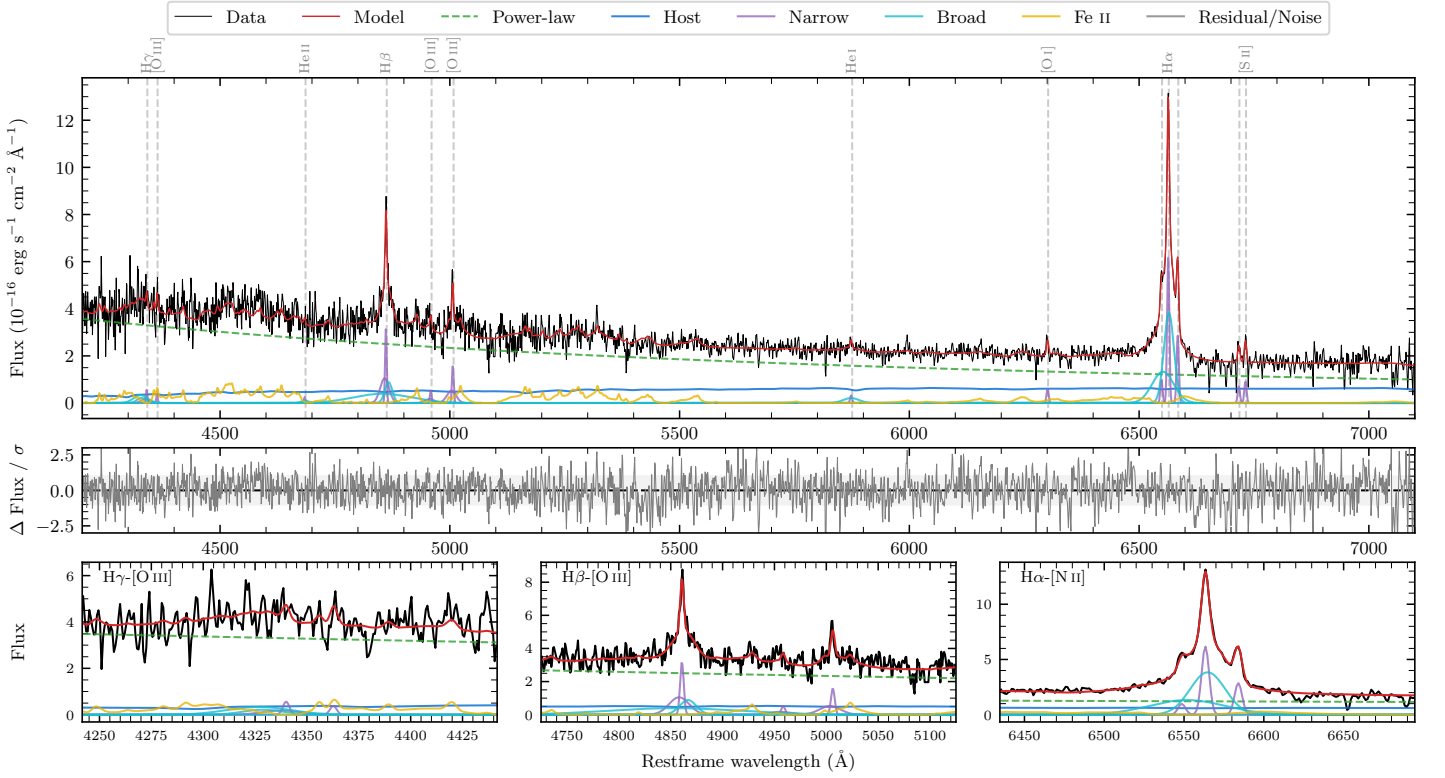
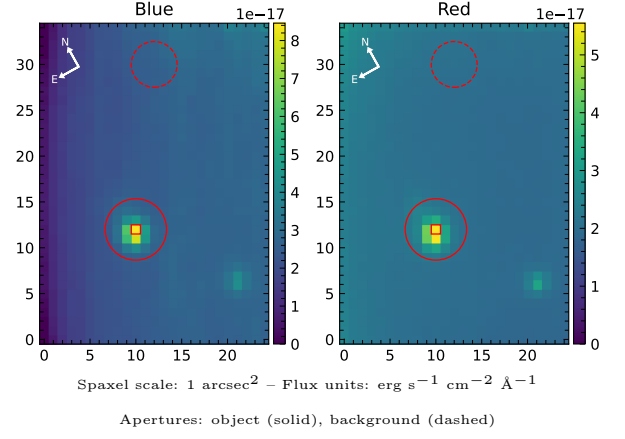


2MASS J20473364–3613577

Spectrum ID	233908272_sp1	Spectrum type	Sy 1.2
Alt name	g2047337–361358	Quality flag	good
z	0.0934	AGN reference	6dFGS
RA, Dec	311.8902, –36.2326	MW $E(B - V)$	0.044
MJD	59823.46	Power law α_ν	0.43 ± 0.07
SNR/ \AA B/R	7.3/8.6	$\log L_{5100, \text{AGN}}$	43.40 ± 0.02
Obs airmass	1.04	$\log H\beta_{\text{Br}}/[\text{O III}]$	0.59 ± 0.10
SMSS ID	233908272	$\log M_{L5100}/M_\odot$	7.04 ± 0.10
Neighbour	10.6", 1273873386	$\log M_{\text{H}\alpha}/M_\odot$	6.58 ± 0.04
SMSS $\langle r_6''_{\text{ap}} \rangle$	16.21 ± 0.06	$\log M_{\text{H}\beta}/M_\odot$	6.91 ± 0.11
2MASS K_{ext}	12.68 ± 0.08	$\log M_{[\text{O III}]} / M_\odot$	6.76 ± 0.11



Emission Line Measurements

Line	$\log L$ (erg s^{-1})	FWHM (km s^{-1})	σ (km s^{-1})	EW (\AA)
H γ Narrow	40.18 ± 0.25	321 ± 66	492 ± 35	2.08 ± 0.86
Hγ Broad	40.68 ± 0.14	2060 ± 320	718 ± 73	5.90 ± 1.17
[O III] 4364	39.56 ± 0.39	257 ± 63	108 ± 25	0.50 ± 0.37
He II Narrow	39.42 ± 0.43	257 ± 63	108 ± 25	0.43 ± 0.38
He II Broad	39.74 ± 0.45	1225 ± 65	520 ± 26	0.89 ± 0.85
H β Narrow	40.99 ± 0.07	321 ± 66	492 ± 35	17.30 ± 1.05
Hβ Broad	41.29 ± 0.07	1580 ± 178	2680 ± 121	35.10 ± 2.89
[O III] 5007	40.70 ± 0.07	321 ± 66	492 ± 35	9.59 ± 1.20
He I Narrow	39.62 ± 0.22	257 ± 63	108 ± 25	1.19 ± 0.33
He I Broad	40.34 ± 0.12	2035 ± 68	864 ± 28	6.22 ± 0.97
[O I] 6300	39.92 ± 0.11	257 ± 63	108 ± 25	2.82 ± 0.43
H α Narrow	40.95 ± 0.02	257 ± 63	108 ± 25	33.21 ± 0.49
Hα Broad	41.65 ± 0.01	1390 ± 65	601 ± 25	166.20 ± 1.50
[N II] 6585	40.61 ± 0.02	257 ± 63	108 ± 25	15.57 ± 0.48
[S II] 6718	40.02 ± 0.08	257 ± 63	108 ± 25	4.20 ± 0.56
[S II] 6732	40.13 ± 0.07	257 ± 63	108 ± 25	5.35 ± 0.53

Emission Summary

H α broad SNR	11.36
H β broad SNR	2.88
H γ broad SNR	1.39
AGN frac	0.82
Host frac	0.18
$\log L_{5100, \text{Host}}$	42.75
Fe II/H β	1.57
Fe II/[O III]	6.18

Quality Flags

spurious_hab/hbb	0/0
15100	2
balmer	1
balmer_snr	1
hb_width	2
balmer_width	0