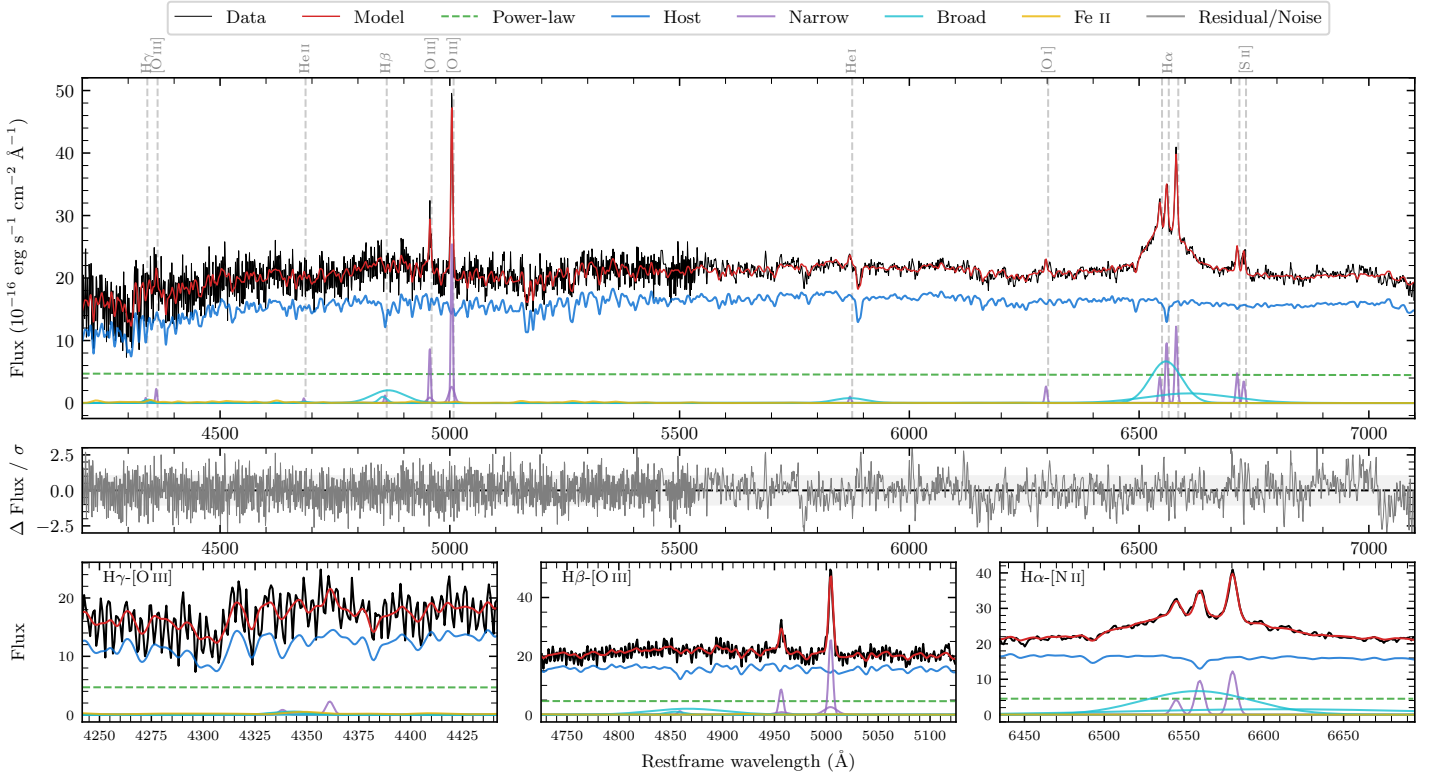
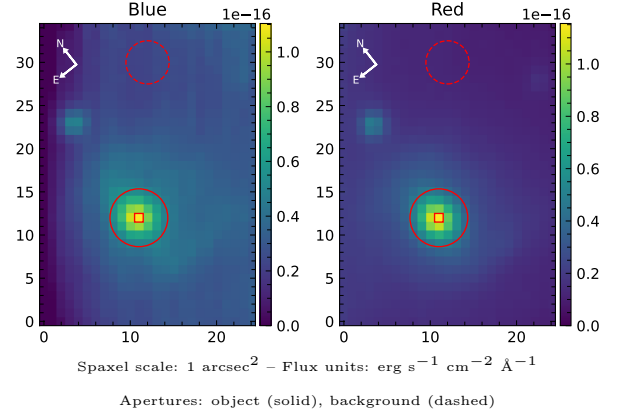


MCG-06-44-023

Spectrum ID	233071576_sp1	Spectrum type	Sy 1.5
Alt name	g2015255-373043	Quality flag	good
z	0.0200	AGN reference	6dFGS
RA, Dec	303.8560, -37.5119	MW $E(B-V)$	0.055
MJD	59732.7	Power law α_ν	-1.91 ± 0.09
SNR/ \AA B/R	12.8/30.4	$\log L_{5100, \text{AGN}}$	42.36 ± 0.03
Obs airmass	1.02	$\log H\beta_{\text{Br}}/[\text{O III}]$	0.07 ± 0.06
SMSS ID	233071576	$\log M_{L5100}/M_\odot$	7.34 ± 0.21
Neighbour	11.8", 2335151007	$\log M_{\text{H}\alpha}/M_\odot$	7.11 ± 0.05
SMSS $\langle r_6''_{\text{ap}} \rangle$	15.36 ± 0.04	$\log M_{\text{H}\beta}/M_\odot$	7.22 ± 0.22
2MASS K_{ext}	10.59 ± 0.04	$\log M_{[\text{O III}]} / M_\odot$	7.28 ± 0.22



Emission Line Measurements

Line	$\log L$ (erg s ⁻¹)	FWHM (km s ⁻¹)	σ (km s ⁻¹)	EW (Å)
H γ Narrow	—	—	—	—
Hγ Broad	—	—	—	—
[O III] 4364	39.01 ± 0.28	292 ± 63	124 ± 25	2.24 ± 0.94
He II Narrow	38.57 ± 0.43	292 ± 63	124 ± 25	0.81 ± 0.71
He II Broad	—	—	—	—
H β Narrow	38.90 ± 0.34	315 ± 63	205 ± 33	1.74 ± 1.12
Hβ Broad	40.31 ± 0.05	3731 ± 989	1771 ± 67	45.10 ± 3.00
[O III] 5007	40.24 ± 0.02	315 ± 63	205 ± 33	38.32 ± 1.18
He I Narrow	38.80 ± 0.20	292 ± 63	124 ± 25	1.43 ± 0.37
He I Broad	39.83 ± 0.08	4176 ± 65	1773 ± 26	15.34 ± 1.56
[O I] 6300	39.24 ± 0.07	292 ± 63	124 ± 25	3.91 ± 0.39
H α Narrow	39.81 ± 0.02	292 ± 63	124 ± 25	14.76 ± 0.41
Hα Broad	40.97 ± 0.01	4140 ± 83	2115 ± 48	210.88 ± 2.34
[N II] 6585	39.92 ± 0.02	292 ± 63	124 ± 25	18.84 ± 0.41
[S II] 6718	39.52 ± 0.04	292 ± 63	124 ± 25	7.52 ± 0.41
[S II] 6732	39.39 ± 0.06	292 ± 63	124 ± 25	5.52 ± 0.45

Emission Summary

H α broad SNR	5.13
H β broad SNR	1.90
H γ broad SNR	0.82
AGN frac	0.23
Host frac	0.77
$\log L_{5100, \text{Host}}$	42.89
Fe II/H β	0.30
Fe II/[O III]	0.36

Quality Flags

spurious_hab/hbb	0/0
15100	1
balmer	1
balmer_snr	2
hb_width	0
balmer_width	1