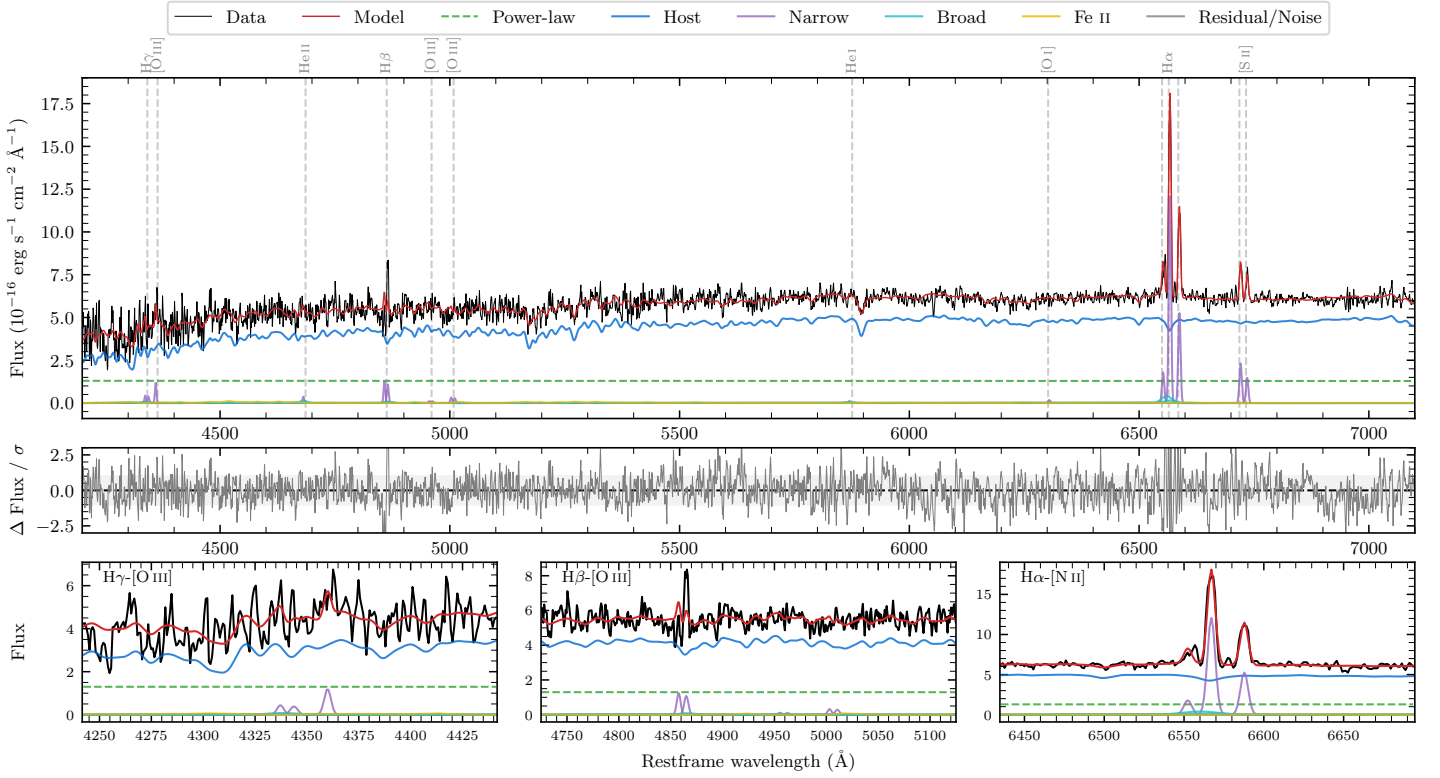
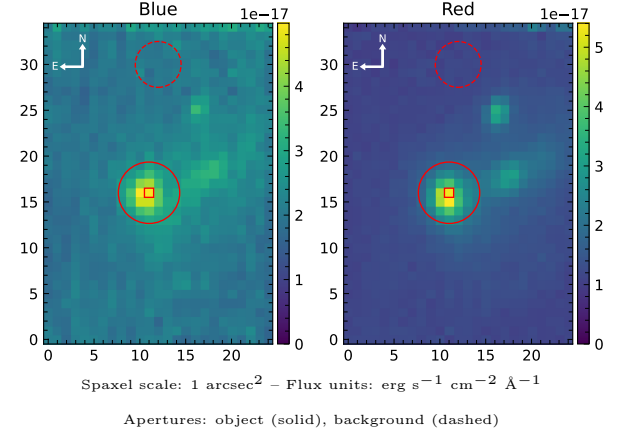


# 6dFGS gJ050924.1–252843

Spectrum ID	23136126_sp2	Spectrum type	SF
Alt name	g0509241–252843	Quality flag	good
$z$	0.0419	AGN reference	6dFGS
RA, Dec	77.3506, –25.4787	MW $E(B - V)$	0.017
MJD	60590.74	Power law $\alpha_\nu$	$-1.99 \pm 0.01$
SNR/ $\text{\AA}$ B/R	10.1/23.6	$\log L_{5100, \text{AGN}}$	$42.43 \pm 0.09$
Obs airmass	1.01	$\log H\beta_{\text{Br}}/[\text{O III}]$	–
SMSS ID	23136126	$\log M_{L5100}/M_\odot$	–
Neighbour	1.9", 2045994195	$\log M_{\text{H}\alpha}/M_\odot$	–
SMSS $\langle r_6''_{\text{ap}} \rangle$	nan $\pm$ nan	$\log M_{\text{H}\beta}/M_\odot$	–
2MASS $K_{\text{ext}}$	$12.95 \pm 0.14$	$\log M_{[\text{O III}]} / M_\odot$	–



## Emission Line Measurements

Line	$\log L$ (erg s $^{-1}$ )	FWHM (km s $^{-1}$ )	$\sigma$ (km s $^{-1}$ )	EW ( $\text{\AA}$ )
H $\gamma$ Narrow	$39.18 \pm 0.37$	–	$255 \pm 25$	$2.82 \pm 1.26$
<b>H<math>\gamma</math> Broad</b>	–	–	–	–
[O III] 4364	$39.31 \pm 0.18$	$267 \pm 62$	$112 \pm 25$	$3.94 \pm 1.02$
He II Narrow	$38.84 \pm 0.40$	$267 \pm 62$	$112 \pm 25$	$1.32 \pm 0.84$
<b>He II Broad</b>	<b><math>39.08 \pm 0.46</math></b>	<b><math>1216 \pm 62</math></b>	<b><math>516 \pm 25</math></b>	<b><math>2.30 \pm 1.90</math></b>
H $\beta$ Narrow	$39.69 \pm 0.13$	–	$255 \pm 25$	$8.97 \pm 0.99$
<b>H<math>\beta</math> Broad</b>	–	–	–	–
[O III] 5007	$39.12 \pm 0.27$	–	$255 \pm 25$	$2.43 \pm 0.96$
He I Narrow	$38.43 \pm 0.51$	$267 \pm 62$	$112 \pm 25$	$0.52 \pm 0.49$
<b>He I Broad</b>	<b><math>38.83 \pm 0.49</math></b>	<b><math>1252 \pm 62</math></b>	<b><math>531 \pm 25</math></b>	<b><math>1.30 \pm 1.02</math></b>
[O I] 6300	$38.64 \pm 0.41$	$267 \pm 62$	$112 \pm 25$	$0.84 \pm 0.50$
H $\alpha$ Narrow	$40.55 \pm 0.01$	$267 \pm 62$	$112 \pm 25$	$60.21 \pm 0.64$
<b>H<math>\alpha</math> Broad</b>	–	–	–	–
[N II] 6585	$40.19 \pm 0.02$	$267 \pm 62$	$112 \pm 25$	$26.31 \pm 0.58$
[S II] 6718	$39.79 \pm 0.03$	$267 \pm 62$	$112 \pm 25$	$11.91 \pm 0.49$
[S II] 6732	$39.60 \pm 0.06$	$267 \pm 62$	$112 \pm 25$	$7.68 \pm 0.51$

## Emission Summary

H $\alpha$ broad SNR	0.00
H $\beta$ broad SNR	0.00
H $\gamma$ broad SNR	0.00
AGN frac	0.24
Host frac	0.76
$\log L_{5100, \text{Host}}$	42.93
Fe II/H $\beta$	–
Fe II/[O III]	–

## Quality Flags

spurious_hab/hbb	1/0
15100	1
balmer	2
balmer_snr	2
hb_width	2
balmer_width	2