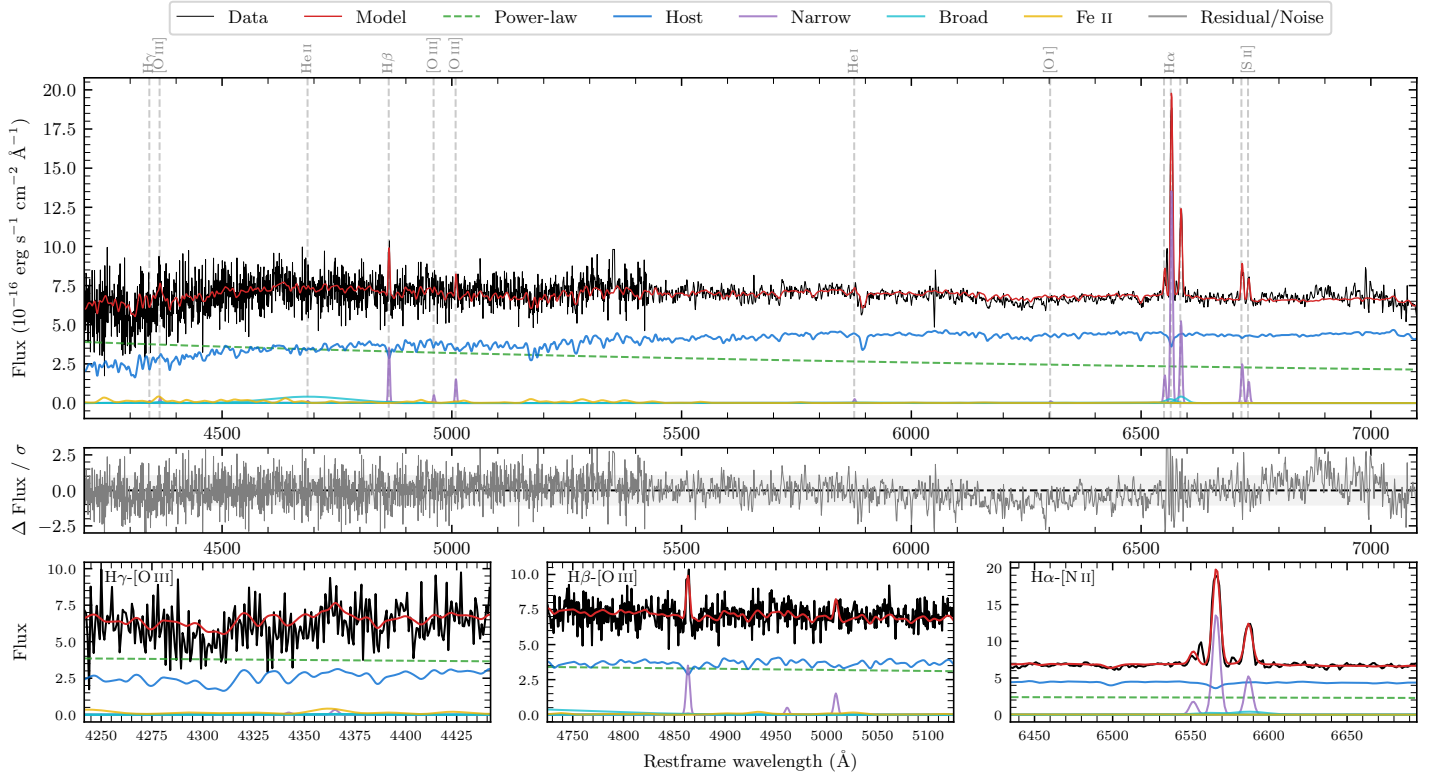
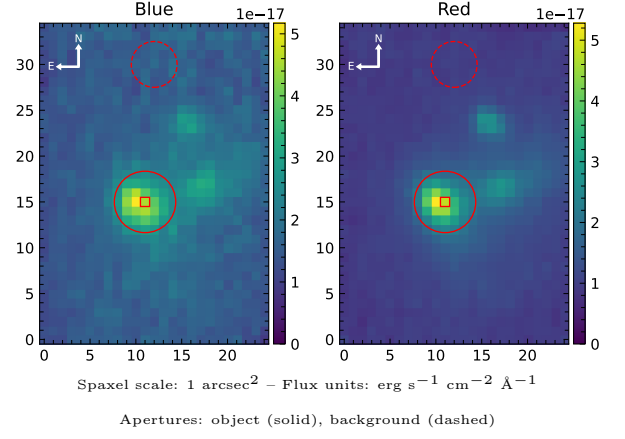


6dFGS gJ050924.1–252843

Spectrum ID	23136126_sp1	Spectrum type	SF
Alt name	g0509241–252843	Quality flag	good
z	0.0419	AGN reference	6dFGS
RA, Dec	77.3506, –25.4787	MW $E(B - V)$	0.017
MJD	60266.61	Power law α_ν	-0.85 ± 0.06
SNR/ \AA B/R	9.3/18.7	$\log L_{5100, \text{AGN}}$	42.81 ± 0.02
Obs airmass	1.02	$\log H\beta_{\text{Br}}/[\text{O III}]$	–
SMSS ID	23136126	$\log M_{L5100}/M_\odot$	–
Neighbour	1.9", 2045994195	$\log M_{\text{H}\alpha}/M_\odot$	–
SMSS $\langle r_{6'' \text{ap}} \rangle$	nan \pm nan	$\log M_{\text{H}\beta}/M_\odot$	–
2MASS K_{ext}	12.95 ± 0.14	$\log M_{[\text{O III}]} / M_\odot$	–



Emission Line Measurements

Line	$\log L$ (erg s ⁻¹)	FWHM (km s ⁻¹)	σ (km s ⁻¹)	EW (Å)
H γ Narrow	–	–	–	–
Hγ Broad	–	–	–	–
[O III] 4364	–	–	–	–
He II Narrow	–	–	–	–
He II Broad	40.57 ± 0.11	12948 ± 62	5498 ± 25	26.59 ± 3.43
H β Narrow	39.84 ± 0.07	262 ± 63	117 ± 26	5.16 ± 0.60
Hβ Broad	–	–	–	–
[O III] 5007	39.50 ± 0.11	262 ± 63	117 ± 26	2.38 ± 0.59
He I Narrow	38.76 ± 0.33	259 ± 62	109 ± 25	0.53 ± 0.31
He I Broad	–	–	–	–
[O I] 6300	–	–	–	–
H α Narrow	40.54 ± 0.01	259 ± 62	109 ± 25	36.73 ± 0.49
Hα Broad	–	–	–	–
[N II] 6585	40.12 ± 0.02	259 ± 62	109 ± 25	14.07 ± 0.46
[S II] 6718	39.81 ± 0.04	259 ± 62	109 ± 25	7.05 ± 0.37
[S II] 6732	39.55 ± 0.07	259 ± 62	109 ± 25	3.89 ± 0.38

Emission Summary

H α broad SNR	0.63
H β broad SNR	0.00
H γ broad SNR	0.00
AGN frac	0.47
Host frac	0.53
$\log L_{5100, \text{Host}}$	42.87
Fe II/H β	–
Fe II/[O III]	6.55

Quality Flags

spurious_hab/hbb	0/0
15100	1
balmer	2
balmer_snr	2
hb_width	2
balmer_width	2