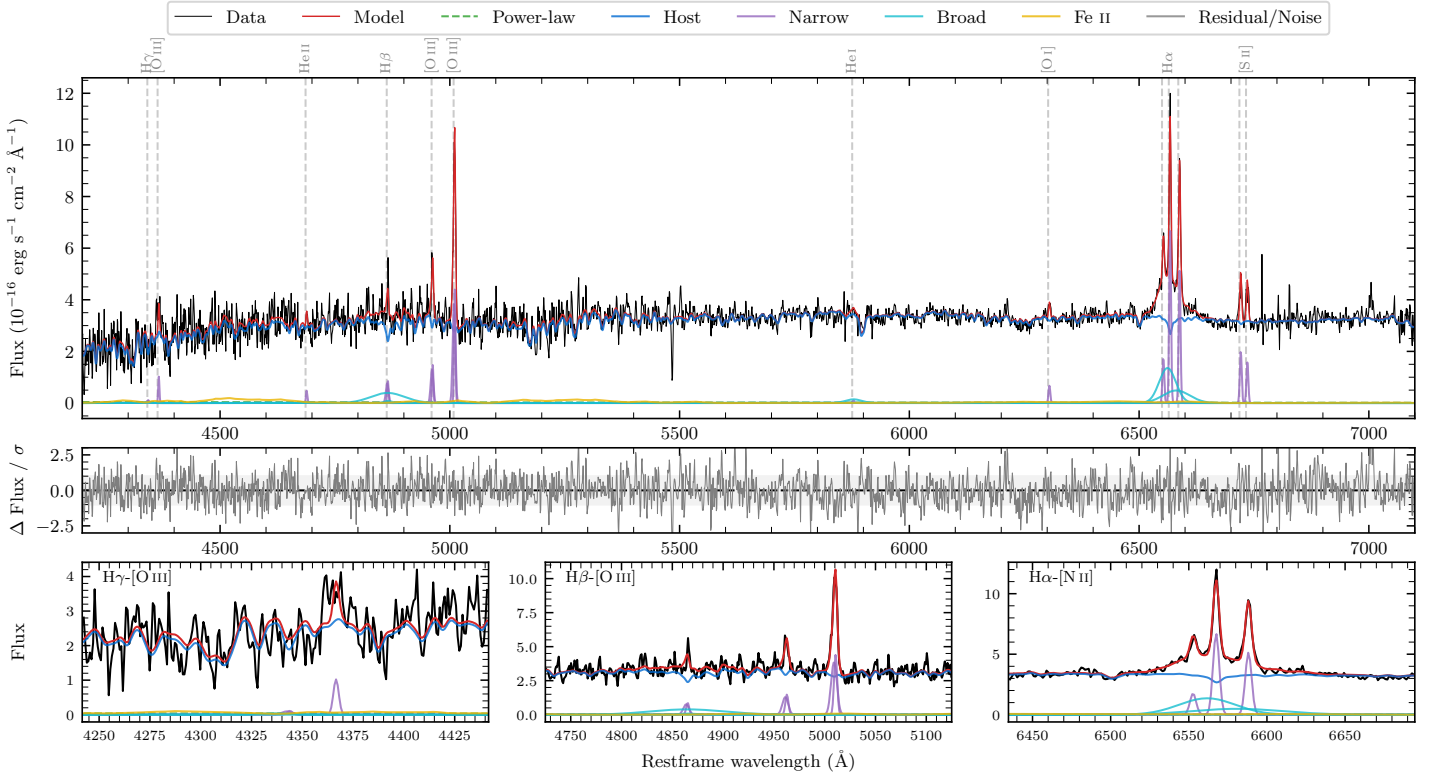
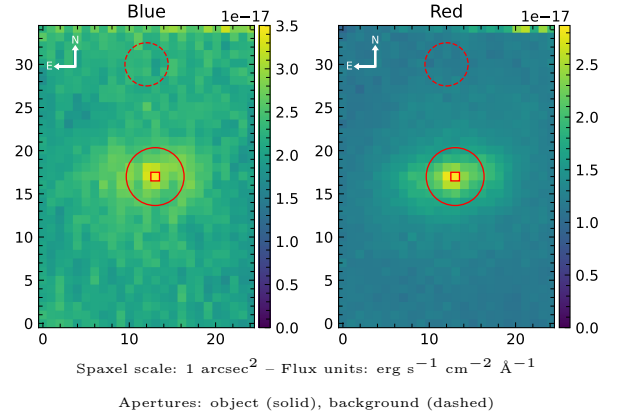


LEDA 926884

Spectrum ID	23122391_sp1	Spectrum type	Sy 1.5
Alt name	g0458178-141543	Quality flag	good
z	0.0758	AGN reference	6dFGS
RA, Dec	74.5742, -14.2620	MW $E(B - V)$	0.081
MJD	60590.73	Power law α_ν	0.38 ± 0.16
SNR/ \AA B/R	6.9/14.8	$\log L_{5100, \text{AGN}}$	41.23 ± 0.55
Obs airmass	1.05	$\log H\beta_{\text{Br}}/[\text{O III}]$	-0.06 ± 0.09
SMSS ID	23122391	$\log M_{L5100}/M_\odot$	7.03 ± 0.29
Neighbour	None $< 15''$	$\log M_{\text{H}\alpha}/M_\odot$	6.69 ± 0.05
SMSS $\langle r_6'' \text{ap} \rangle$	17.45 ± 0.10	$\log M_{\text{H}\beta}/M_\odot$	7.59 ± 0.16
2MASS K_{ext}	12.85 ± 0.17	$\log M_{[\text{O III}]} / M_\odot$	7.74 ± 0.15



Emission Line Measurements

Line	$\log L$ (erg s $^{-1}$)	FWHM (km s $^{-1}$)	σ (km s $^{-1}$)	EW (Angstroms)
H γ Narrow	—	—	—	—
Hγ Broad	—	—	—	—
[O III] 4364	39.71 ± 0.20	217 ± 63	91 ± 25	104.95 ± 29.19
He II Narrow	39.42 ± 0.31	217 ± 63	91 ± 25	63.24 ± 29.75
He II Broad	—	—	—	—
H β Narrow	40.11 ± 0.11	305 ± 63	154 ± 25	339.26 ± 43.73
Hβ Broad	40.77 ± 0.09	4535 ± 769	1904 ± 49	1503.40 ± 170.13
[O III] 5007	40.83 ± 0.02	305 ± 63	154 ± 25	1901.17 ± 51.28
He I Narrow	—	—	—	—
He I Broad	39.97 ± 0.20	2073 ± 63	880 ± 25	388.45 ± 108.23
[O I] 6300	39.69 ± 0.10	217 ± 63	91 ± 25	237.83 ± 30.99
H α Narrow	40.70 ± 0.01	217 ± 63	91 ± 25	2732.27 ± 41.89
Hα Broad	41.16 ± 0.02	2222 ± 89	891 ± 31	7858.83 ± 150.02
[N II] 6585	40.59 ± 0.02	217 ± 63	91 ± 25	2117.70 ± 40.36
[S II] 6718	40.19 ± 0.03	217 ± 63	91 ± 25	885.38 ± 48.39
[S II] 6732	40.09 ± 0.09	217 ± 63	91 ± 25	699.59 ± 65.63

Emission Summary

H α broad SNR	4.07
H β broad SNR	1.17
H γ broad SNR	0.00
AGN frac	0.01
Host frac	0.99
$\log L_{5100, \text{Host}}$	43.34
Fe II/H β	0.96
Fe II/[O III]	0.81

Quality Flags

spurious_hab/hbb	0/0
15100	2
balmer	1
balmer_snr	2
hb_width	0
balmer_width	1