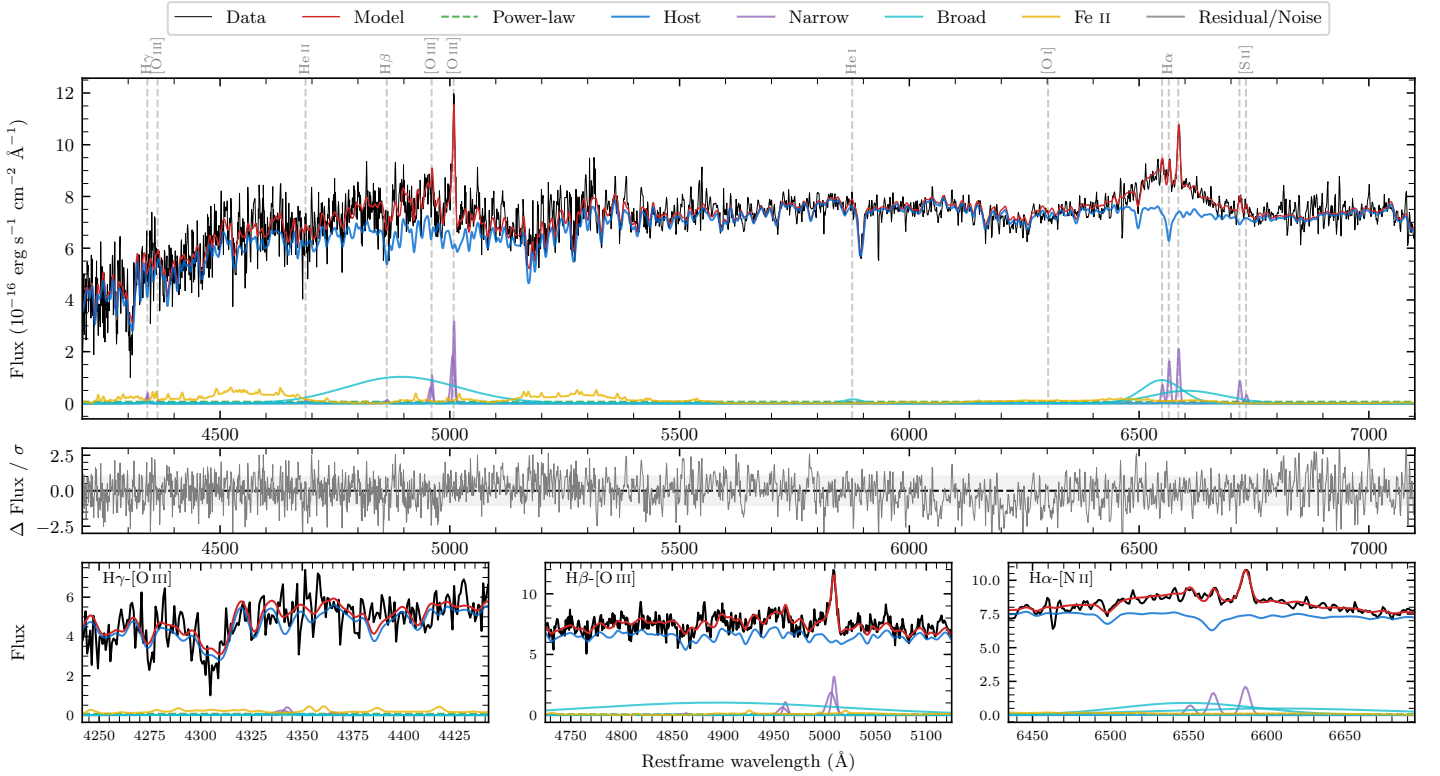
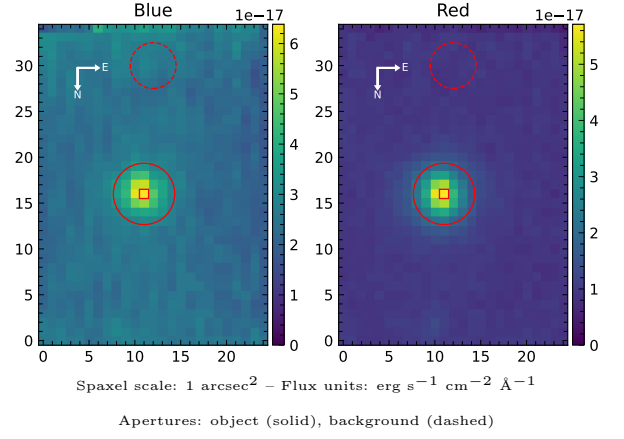


# [VV2006] J045850.6–190604

Spectrum ID	22956317_sp1	Spectrum type	Sy 1.5+
Alt name	J045850.6-190604	Quality flag	good
$z$	0.0627	AGN reference	6dFGS
RA, Dec	74.7108, -19.1012	MW $E(B - V)$	0.037
MJD	60950.75	Power law $\alpha_\nu$	$-1.96 \pm 0.04$
SNR/ $\text{\AA}$ B/R	11.3/25.5	$\log L_{5100, \text{AGN}}$	$41.50 \pm 0.56$
Obs airmass	1.03	$\log H\beta_{\text{Br}}/[\text{O III}]$	$< 0.02$
SMSS ID	22956317	$\log M_{L5100}/M_\odot$	—
Neighbour	None $< 15''$	$\log M_{\text{H}\alpha}/M_\odot$	$7.61 \pm 0.05$
SMSS $\langle r_{6''}^{\text{ap}} \rangle$	$16.40 \pm 0.05$	$\log M_{\text{H}\beta}/M_\odot$	—
2MASS $K_{\text{ext}}$	$12.65 \pm 0.11$	$\log M_{[\text{O III}]} / M_\odot$	—



## Emission Line Measurements

Line	$\log L$ (erg s <sup>-1</sup> )	FWHM (km s <sup>-1</sup> )	$\sigma$ (km s <sup>-1</sup> )	EW (Å)
H $\gamma$ Narrow	$39.59 \pm 0.35$	$395 \pm 71$	$215 \pm 26$	$62.89 \pm 33.78$
<b>H<math>\gamma</math> Broad</b>	—	—	—	—
[O III] 4364	—	—	—	—
He II Narrow	—	—	—	—
<b>He II Broad</b>	—	—	—	—
H $\beta$ Narrow	—	—	—	—
<b>H<math>\beta</math> Broad</b>	$< 40.57$	—	—	—
[O III] 5007	$40.55 \pm 0.04$	$395 \pm 71$	$215 \pm 26$	$581.45 \pm 30.35$
He I Narrow	—	—	—	—
<b>He I Broad</b>	<b><math>39.92 \pm 0.21</math></b>	<b><math>2502 \pm 62</math></b>	<b><math>1062 \pm 25</math></b>	<b><math>135.26 \pm 35.13</math></b>
[O I] 6300	—	—	—	—
H $\alpha$ Narrow	$40.06 \pm 0.06$	$302 \pm 62$	$128 \pm 25$	$188.37 \pm 12.42$
<b>H<math>\alpha</math> Broad</b>	<b><math>41.29 \pm 0.02</math></b>	<b><math>5875 \pm 254</math></b>	<b><math>2526 \pm 57</math></b>	<b><math>3172.13 \pm 68.86</math></b>
[N II] 6585	$40.17 \pm 0.04$	$302 \pm 62$	$128 \pm 25$	$242.88 \pm 12.41$
[S II] 6718	$39.80 \pm 0.09$	$302 \pm 62$	$128 \pm 25$	$103.82 \pm 13.05$
[S II] 6732	$39.37 \pm 0.22$	$302 \pm 62$	$128 \pm 25$	$38.55 \pm 12.30$

## Emission Summary

H $\alpha$ broad SNR	2.25
H $\beta$ broad SNR	0.00
H $\gamma$ broad SNR	0.00
AGN frac	0.01
Host frac	0.99
$\log L_{5100, \text{Host}}$	43.48
Fe II/H $\beta$	—
Fe II/[O III]	—

## Quality Flags

spurious_hab/hbb	0/2
15100	2
balmer	2
balmer_snr	2
hb_width	2
balmer_width	2