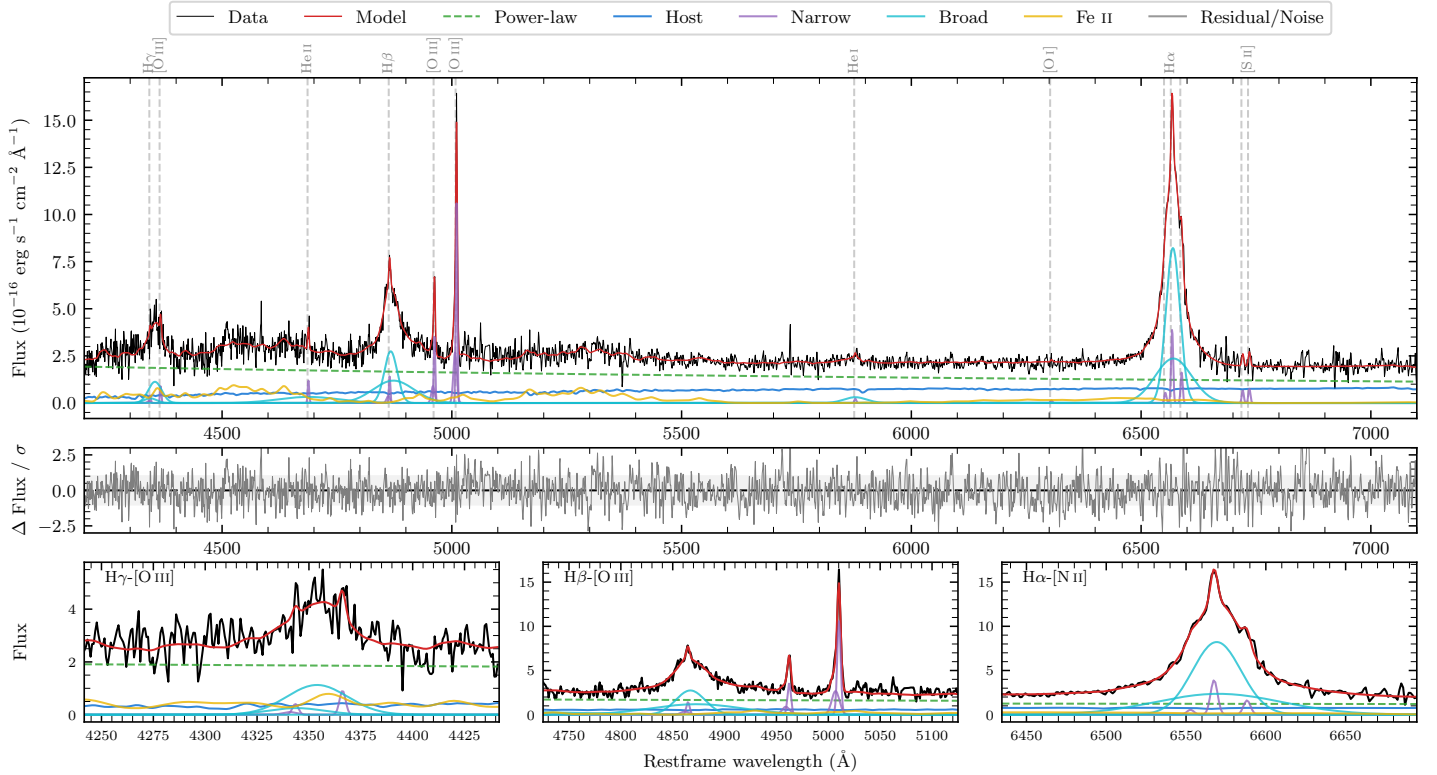
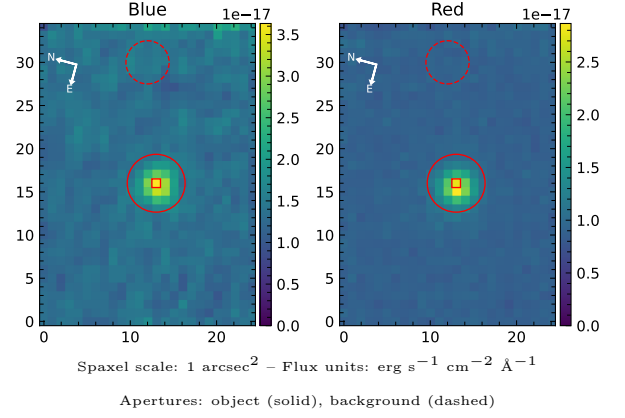


# 2MASS J04352649–1643460

Spectrum ID	22745338_sp1	Spectrum type	Sy 1.2
Alt name	g0435265–164346	Quality flag	good
$z$	0.0979	AGN reference	6dFGS
RA, Dec	68.8604, –16.7295	MW $E(B - V)$	0.062
MJD	60581.72	Power law $\alpha_\nu$	$-0.99 \pm 0.35$
SNR/Å B/R	6.6/9.7	$\log L_{5100, \text{AGN}}$	$43.29 \pm 0.04$
Obs airmass	1.05	$\log H\beta_{\text{Br}}/[\text{O III}]$	$0.52 \pm 0.02$
SMSS ID	22745338	$\log M_{L5100}/M_\odot$	$7.43 \pm 0.05$
Neighbour	None $< 15''$	$\log M_{\text{H}\alpha}/M_\odot$	$7.17 \pm 0.03$
SMSS $\langle r_6''_{\text{ap}} \rangle$	$17.24 \pm 0.18$	$\log M_{\text{H}\beta}/M_\odot$	$7.56 \pm 0.05$
2MASS $K_{\text{ext}}$	nan $\pm$ nan	$\log M_{[\text{O III}]} / M_\odot$	$7.47 \pm 0.05$



## Emission Line Measurements

Line	$\log L$ ( $\text{erg s}^{-1}$ )	FWHM ( $\text{km s}^{-1}$ )	$\sigma$ ( $\text{km s}^{-1}$ )	EW ( $\text{Angstroms}$ )
H $\gamma$ Narrow	$39.79 \pm 0.32$	$270 \pm 63$	$183 \pm 28$	$1.36 \pm 0.82$
<b>H<math>\gamma</math> Broad</b>	<b><math>41.13 \pm 0.05</math></b>	<b><math>2407 \pm 189</math></b>	<b><math>833 \pm 62</math></b>	<b><math>29.34 \pm 1.89</math></b>
[O III] 4364	$39.95 \pm 0.20$	$239 \pm 63$	$100 \pm 25$	$1.98 \pm 0.61$
He II Narrow	$40.10 \pm 0.12$	$239 \pm 63$	$100 \pm 25$	$2.99 \pm 0.55$
<b>He II Broad</b>	<b><math>41.16 \pm 0.08</math></b>	<b><math>9902 \pm 280</math></b>	<b><math>4205 \pm 119</math></b>	<b><math>34.10 \pm 3.70</math></b>
H $\beta$ Narrow	$40.38 \pm 0.11$	$270 \pm 63$	$183 \pm 28$	$6.00 \pm 0.87$
<b>H<math>\beta</math> Broad</b>	<b><math>41.79 \pm 0.02</math></b>	<b><math>2589 \pm 133</math></b>	<b><math>1529 \pm 74</math></b>	<b><math>151.75 \pm 3.34</math></b>
[O III] 5007	$41.27 \pm 0.02$	$270 \pm 63$	$183 \pm 28$	$47.33 \pm 1.02$
He I Narrow	$39.50 \pm 0.27$	$239 \pm 63$	$100 \pm 25$	$0.93 \pm 0.35$
<b>He I Broad</b>	<b><math>40.71 \pm 0.07</math></b>	<b><math>2930 \pm 206</math></b>	<b><math>1244 \pm 87</math></b>	<b><math>15.11 \pm 1.42</math></b>
[O I] 6300	$39.29 \pm 0.36$	$239 \pm 63$	$100 \pm 25$	$0.62 \pm 0.42$
H $\alpha$ Narrow	$40.76 \pm 0.03$	$239 \pm 63$	$100 \pm 25$	$19.35 \pm 0.56$
<b>H<math>\alpha</math> Broad</b>	<b><math>42.17 \pm 0.01</math></b>	<b><math>1902 \pm 66</math></b>	<b><math>913 \pm 25</math></b>	<b><math>491.30 \pm 2.20</math></b>
[N II] 6585	$40.38 \pm 0.06$	$239 \pm 63$	$100 \pm 25$	$8.04 \pm 0.65$
[S II] 6718	$40.00 \pm 0.08$	$239 \pm 63$	$100 \pm 25$	$3.44 \pm 0.50$
[S II] 6732	$40.06 \pm 0.08$	$239 \pm 63$	$100 \pm 25$	$3.91 \pm 0.53$

## Emission Summary

H $\alpha$ broad SNR	25.47
H $\beta$ broad SNR	9.43
H $\gamma$ broad SNR	3.28
AGN frac	0.74
Host frac	0.26
$\log L_{5100, \text{Host}}$	42.84
Fe II/H $\beta$	0.87
Fe II/[O III]	2.88

## Quality Flags

spurious_hab/hbb	0/0
15100	0
balmer	0
balmer_snr	0
hb_width	1
balmer_width	0