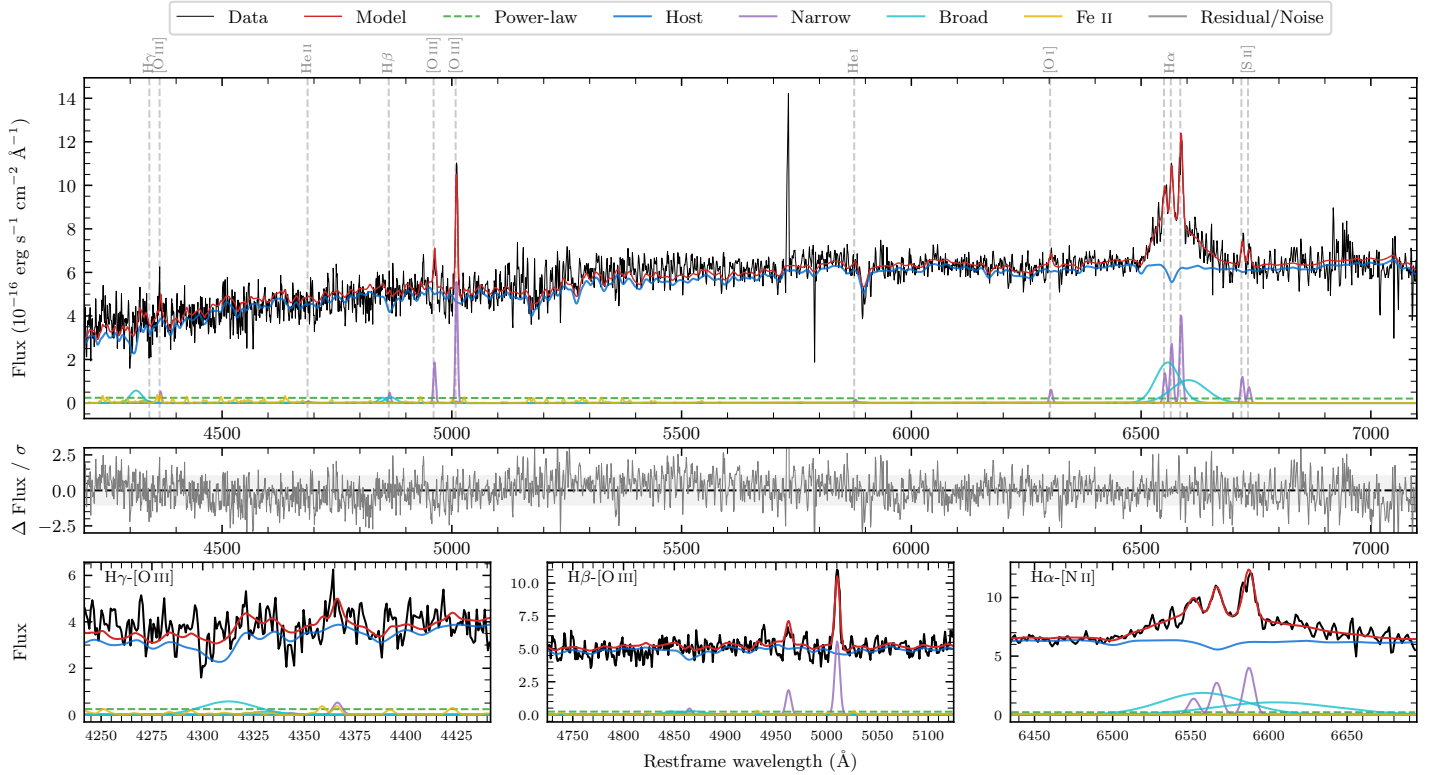
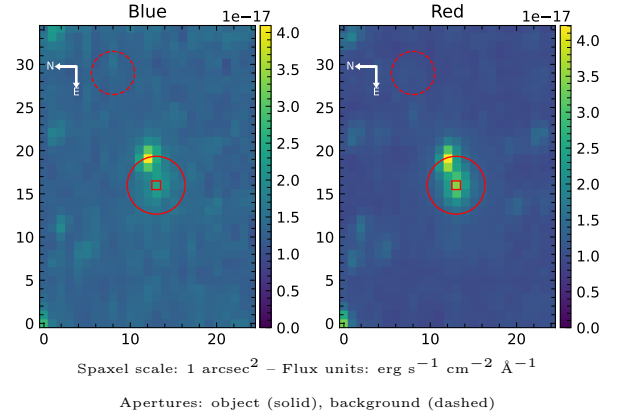


LEDA 209104

Spectrum ID	226967957_sp1	Spectrum type	Sy 1.5+
Alt name	g1854343-281421	Quality flag	good
z	0.1001	AGN reference	6dFGS
RA, Dec	283.6427, -28.2390	MW $E(B-V)$	0.187
MJD	60165.44	Power law α_ν	-1.68 ± 0.17
SNR/ \AA B/R	8.5/14.1	$\log L_{5100, \text{AGN}}$	42.47 ± 0.30
Obs airmass	1.04	$\log H\beta_{\text{Br}}/[\text{O III}]$	< 0.04
SMSS ID	226967957	$\log M_{L5100}/M_\odot$	—
Neighbour	7.5", 226967956	$\log M_{H\alpha}/M_\odot$	7.55 ± 0.05
SMSS $\langle r_6''_{\text{ap}} \rangle$	17.13 ± 0.03	$\log M_{H\beta}/M_\odot$	—
2MASS K_{ext}	12.67 ± 0.13	$\log M_{[\text{O III}]} / M_\odot$	—



Emission Line Measurements

Line	$\log L$ (erg s $^{-1}$)	FWHM (km s $^{-1}$)	σ (km s $^{-1}$)	EW (Angstroms)
H γ Narrow	—	—	—	—
Hγ Broad	—	—	—	—
[O III] 4364	39.90 ± 0.31	357 ± 62	151 ± 25	13.34 ± 6.41
He II Narrow	—	—	—	—
He II Broad	—	—	—	—
H β Narrow	39.92 ± 0.32	359 ± 63	168 ± 30	14.31 ± 9.25
Hβ Broad	< 41.05	—	—	—
[O III] 5007	41.01 ± 0.03	359 ± 63	168 ± 30	175.08 ± 11.80
He I Narrow	39.52 ± 0.47	357 ± 62	151 ± 25	6.03 ± 5.80
He I Broad	—	—	—	—
[O I] 6300	40.13 ± 0.16	357 ± 62	151 ± 25	25.25 ± 6.27
H α Narrow	40.80 ± 0.06	357 ± 62	151 ± 25	119.24 ± 7.64
Hα Broad	41.79 ± 0.02	3839 ± 195	1485 ± 26	1171.49 ± 24.46
[N II] 6585	40.97 ± 0.04	357 ± 62	151 ± 25	175.85 ± 8.63
[S II] 6718	40.45 ± 0.09	357 ± 62	151 ± 25	54.10 ± 7.30
[S II] 6732	40.24 ± 0.16	357 ± 62	151 ± 25	33.16 ± 7.25

Emission Summary

H α broad SNR	4.06
H β broad SNR	0.74
H γ broad SNR	0.00
AGN frac	0.04
Host frac	0.96
$\log L_{5100, \text{Host}}$	43.80
Fe II/H β	—
Fe II/[O III]	0.61

Quality Flags

spurious_hab/hbb	0/0
15100	2
balmer	2
balmer_snr	2
hb_width	2
balmer_width	2