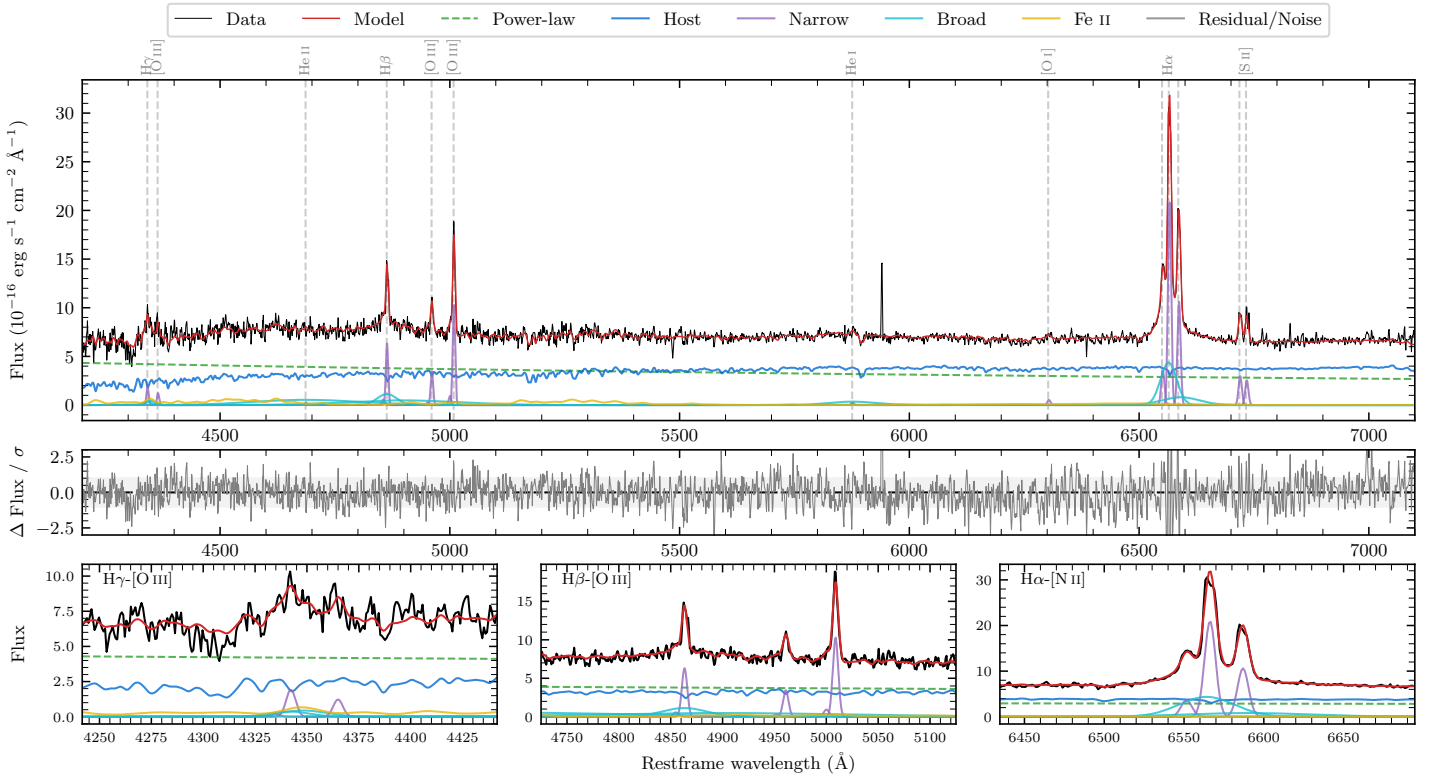
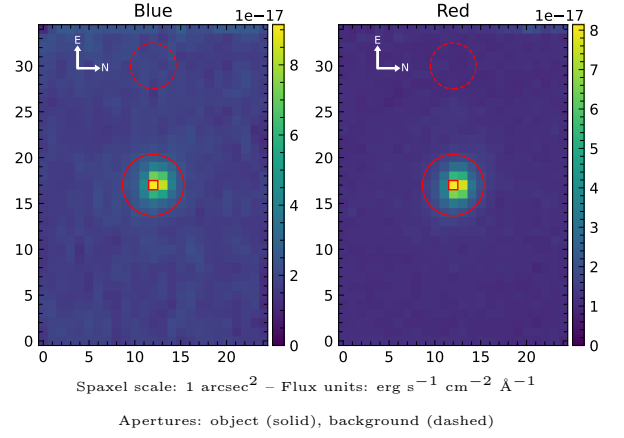


# LEDA 814593

Spectrum ID	22578181_sp2	Spectrum type	Sy 1.5
Alt name	g0444039-222446	Quality flag	good
$z$	0.0755	AGN reference	6dFGS
RA, Dec	71.0164, -22.4130	MW $E(B - V)$	0.040
MJD	60589.73	Power law $\alpha_\nu$	$-1.08 \pm 0.22$
SNR/ $\text{\AA}$ B/R	12.2/22.9	$\log L_{5100, \text{AGN}}$	$43.41 \pm 0.03$
Obs airmass	1.02	$\log H\beta_{\text{Br}}/[\text{O III}]$	$-0.10 \pm 0.31$
SMSS ID	22578181	$\log M_{L5100}/M_\odot$	$7.62 \pm 0.03$
Neighbour	None $< 15''$	$\log M_{\text{H}\alpha}/M_\odot$	$6.90 \pm 0.03$
SMSS $\langle r_6 \rangle_{\text{ap}}$	$16.71 \pm 0.04$	$\log M_{\text{H}\beta}/M_\odot$	$7.33 \pm 0.15$
2MASS $K_{\text{ext}}$	$13.09 \pm 0.12$	$\log M_{[\text{O III}]} / M_\odot$	$7.51 \pm 0.04$



## Emission Line Measurements

Line	$\log L$ (erg s $^{-1}$ )	FWHM (km s $^{-1}$ )	$\sigma$ (km s $^{-1}$ )	EW ( $\text{\AA}$ )
H $\gamma$ Narrow	$40.26 \pm 0.13$	$376 \pm 63$	$214 \pm 28$	$3.09 \pm 0.49$
<b>H<math>\gamma</math> Broad</b>	<b><math>40.55 \pm 0.14</math></b>	<b><math>1732 \pm 143</math></b>	<b><math>642 \pm 48</math></b>	<b><math>5.45 \pm 0.95</math></b>
[O III] 4364	$40.03 \pm 0.16$	$373 \pm 63$	$158 \pm 25$	$1.82 \pm 0.43$
He II Narrow	$39.45 \pm 0.38$	$373 \pm 63$	$158 \pm 25$	$0.51 \pm 0.37$
<b>He II Broad</b>	—	—	—	—
H $\beta$ Narrow	$40.82 \pm 0.04$	$376 \pm 63$	$214 \pm 28$	$12.55 \pm 0.62$
<b>H<math>\beta</math> Broad</b>	<b><math>40.95^{+0.55}_{-0.06}</math></b>	<b><math>3067 \pm 76</math></b>	<b><math>1141 \pm 35</math></b>	<b><math>17.06 \pm 1.27</math></b>
[O III] 5007	$41.05 \pm 0.02$	$376 \pm 63$	$214 \pm 28$	$21.68 \pm 0.50$
He I Narrow	$39.45 \pm 0.29$	$373 \pm 63$	$158 \pm 25$	$0.64 \pm 0.29$
<b>He I Broad</b>	<b><math>40.84 \pm 0.06</math></b>	<b><math>6189 \pm 85</math></b>	<b><math>2628 \pm 35</math></b>	<b><math>15.43 \pm 1.18</math></b>
[O I] 6300	$39.82 \pm 0.12$	$373 \pm 63$	$158 \pm 25$	$1.59 \pm 0.26$
H $\alpha$ Narrow	$41.43 \pm 0.01$	$373 \pm 63$	$158 \pm 25$	$67.88 \pm 0.39$
<b>H<math>\alpha</math> Broad</b>	<b><math>41.61 \pm 0.01</math></b>	<b><math>2071 \pm 71</math></b>	<b><math>919 \pm 30</math></b>	<b><math>102.52 \pm 1.19</math></b>
[N II] 6585	$41.14 \pm 0.01$	$373 \pm 63$	$158 \pm 25$	$34.55 \pm 0.35$
[S II] 6718	$40.60 \pm 0.02$	$373 \pm 63$	$158 \pm 25$	$10.12 \pm 0.38$
[S II] 6732	$40.53 \pm 0.04$	$373 \pm 63$	$158 \pm 25$	$8.67 \pm 0.47$

## Emission Summary

H $\alpha$ broad SNR	8.53
H $\beta$ broad SNR	1.93
H $\gamma$ broad SNR	1.51
AGN frac	0.54
Host frac	0.46
$\log L_{5100, \text{Host}}$	43.35
Fe II/H $\beta$	—
Fe II/[O III]	—

## Quality Flags

spurious_hab/hbb	0/1
15100	0
balmer	1
balmer_snr	2
hb_width	0
balmer_width	0