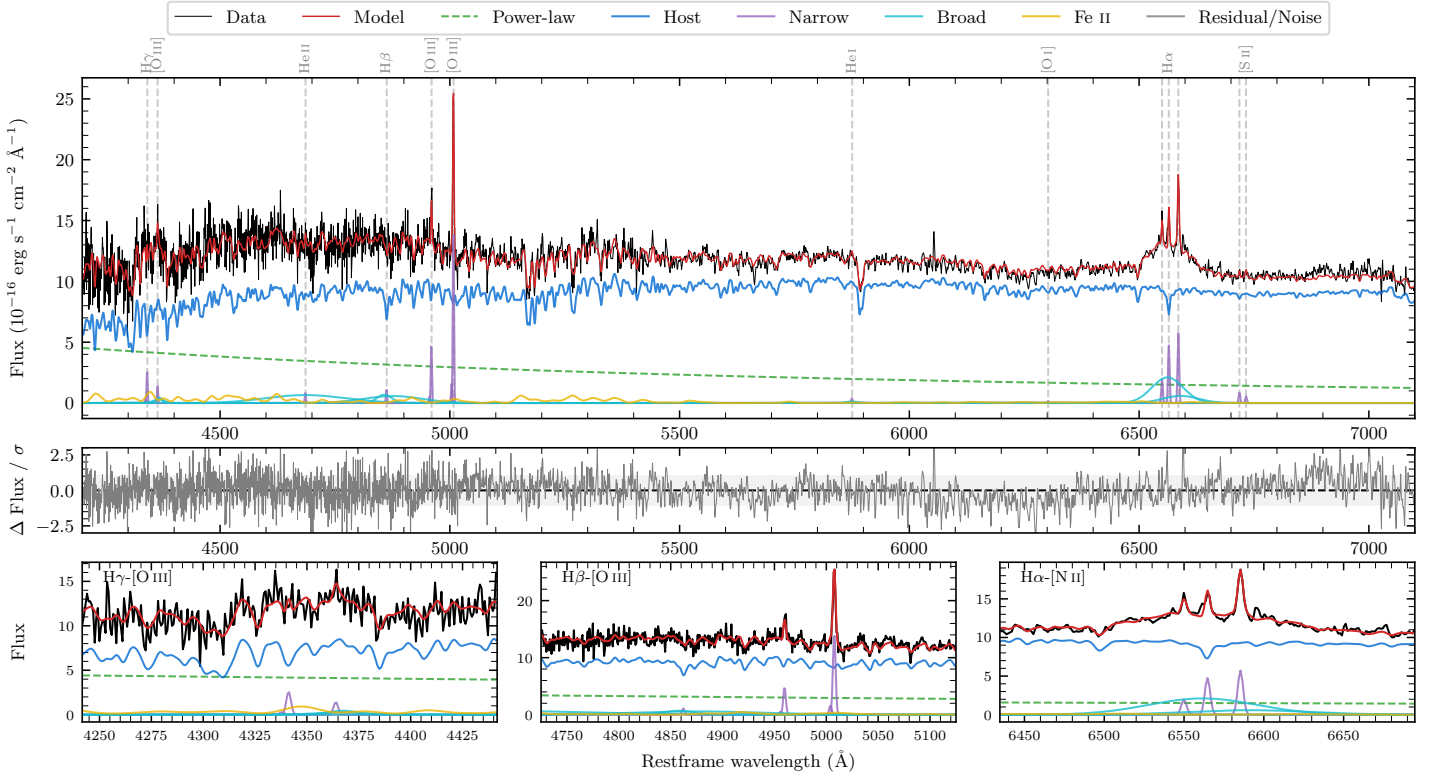
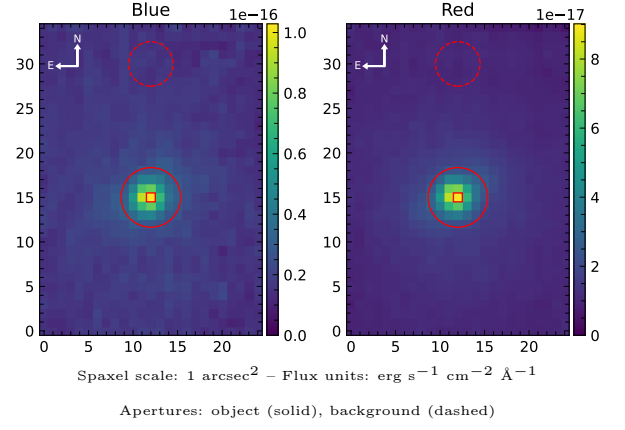


# MCG-04-12-042

Spectrum ID	22573712_sp1	Spectrum type	Sy 1.2
Alt name	g0503441-231923	Quality flag	good
$z$	0.0413	AGN reference	6dFGS
RA, Dec	75.9339, -23.3231	MW $E(B-V)$	0.032
MJD	60266.6	Power law $\alpha_\nu$	$0.47 \pm 0.03$
SNR/ $\text{\AA}$ B/R	14.7/26.0	$\log L_{5100, \text{AGN}}$	$42.76 \pm 0.02$
Obs airmass	1.04	$\log H\beta_{\text{Br}}/[\text{O III}]$	$0.36 \pm 0.07$
SMSS ID	22573712	$\log M_{L5100}/M_\odot$	$7.51 \pm 0.27$
Neighbour	None $< 15''$	$\log M_{\text{H}\alpha}/M_\odot$	$7.07 \pm 0.05$
SMSS $\langle r_6''_{\text{ap}} \rangle$	$16.36 \pm 0.09$	$\log M_{\text{H}\beta}/M_\odot$	$7.39 \pm 0.27$
2MASS $K_{\text{ext}}$	$12.06 \pm 0.12$	$\log M_{[\text{O III}]} / M_\odot$	$7.33 \pm 0.27$



## Emission Line Measurements

Line	$\log L$ (erg s <sup>-1</sup> )	FWHM (km s <sup>-1</sup> )	$\sigma$ (km s <sup>-1</sup> )	EW (Å)
H $\gamma$ Narrow	$39.52 \pm 0.17$	$195 \pm 63$	$101 \pm 26$	$2.01 \pm 0.50$
<b>H<math>\gamma</math> Broad</b>	<b><math>39.91 \pm 0.19</math></b>	<b><math>1404 \pm 212</math></b>	<b><math>409 \pm 66</math></b>	<b><math>4.11 \pm 1.58</math></b>
[O III] 4364	$39.21 \pm 0.31$	$181 \pm 63$	$77 \pm 25$	$1.01 \pm 0.44$
He II Narrow	$39.01 \pm 0.36$	$181 \pm 63$	$77 \pm 25$	$0.76 \pm 0.42$
<b>He II Broad</b>	<b><math>40.77 \pm 0.07</math></b>	<b><math>12951 \pm 62</math></b>	<b><math>5500 \pm 25</math></b>	<b><math>42.78 \pm 3.84</math></b>
H $\beta$ Narrow	$39.20 \pm 0.27$	$195 \pm 63$	$101 \pm 26$	$1.26 \pm 0.49$
<b>H<math>\beta</math> Broad</b>	<b><math>40.69 \pm 0.06</math></b>	<b><math>3724 \pm 1093</math></b>	<b><math>2744 \pm 172</math></b>	<b><math>39.28 \pm 3.22</math></b>
[O III] 5007	$40.33 \pm 0.02$	$195 \pm 63$	$101 \pm 26$	$18.35 \pm 0.55$
He I Narrow	$38.79 \pm 0.37$	$181 \pm 63$	$77 \pm 25$	$0.79 \pm 0.45$
<b>He I Broad</b>	<b><math>39.25 \pm 0.37</math></b>	<b><math>1621 \pm 63</math></b>	<b><math>688 \pm 25</math></b>	<b><math>2.24 \pm 1.25</math></b>
[O I] 6300	–	–	–	–
H $\alpha$ Narrow	$39.91 \pm 0.04$	$181 \pm 63$	$77 \pm 25$	$13.82 \pm 0.69$
<b>H<math>\alpha</math> Broad</b>	<b><math>40.99 \pm 0.02</math></b>	<b><math>3891 \pm 89</math></b>	<b><math>1458 \pm 30</math></b>	<b><math>163.21 \pm 2.88</math></b>
[N II] 6585	$40.00 \pm 0.03$	$181 \pm 63$	$77 \pm 25$	$16.87 \pm 0.62$
[S II] 6718	$39.19 \pm 0.14$	$181 \pm 63$	$77 \pm 25$	$2.78 \pm 0.56$
[S II] 6732	$38.99 \pm 0.24$	$181 \pm 63$	$77 \pm 25$	$1.74 \pm 0.58$

## Emission Summary

H $\alpha$ broad SNR	3.06
H $\beta$ broad SNR	1.48
H $\gamma$ broad SNR	1.02
AGN frac	0.25
Host frac	0.75
$\log L_{5100, \text{Host}}$	43.24
Fe II/H $\beta$	1.04
Fe II/[O III]	2.37

## Quality Flags

spurious_hab/hbb	0/0
15100	2
balmer	1
balmer_snr	2
hb_width	2
balmer_width	1