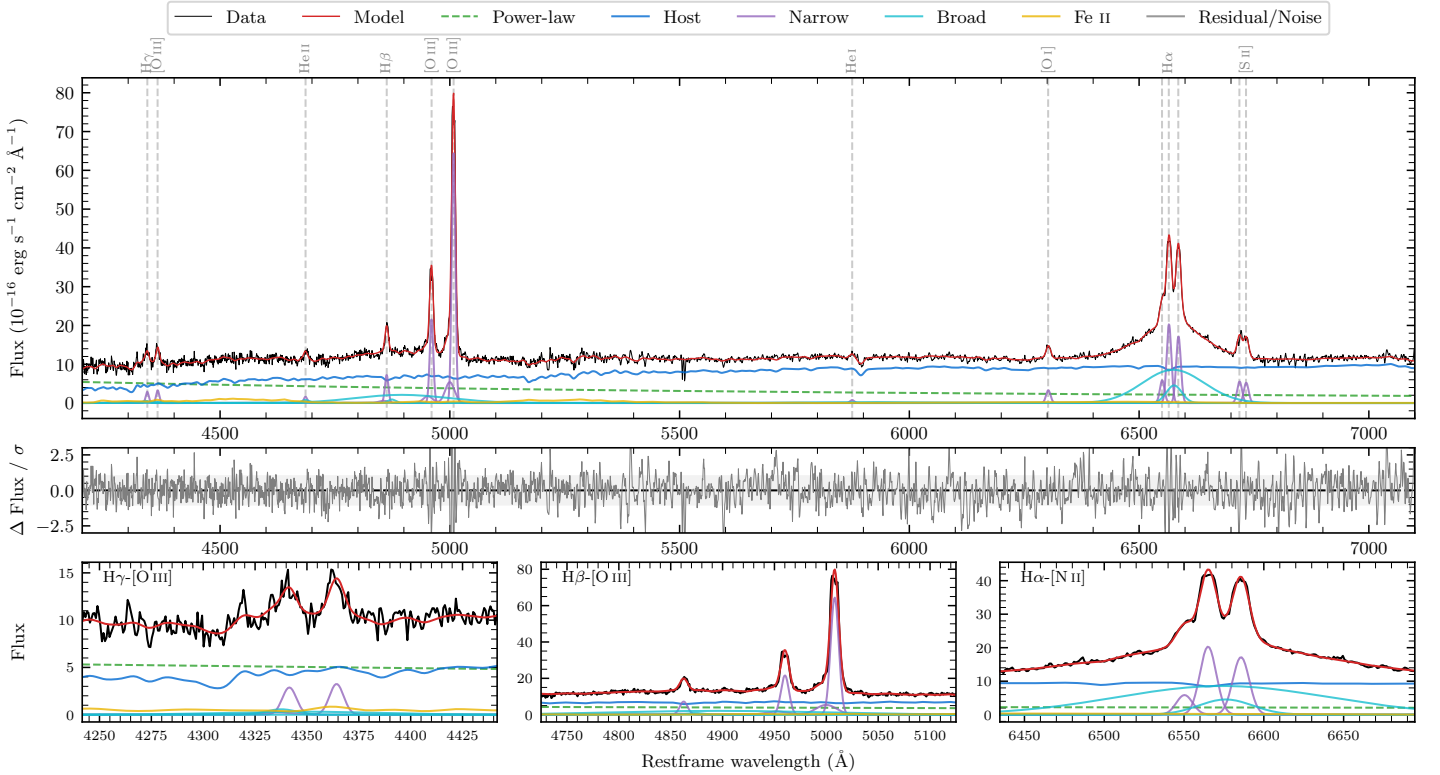
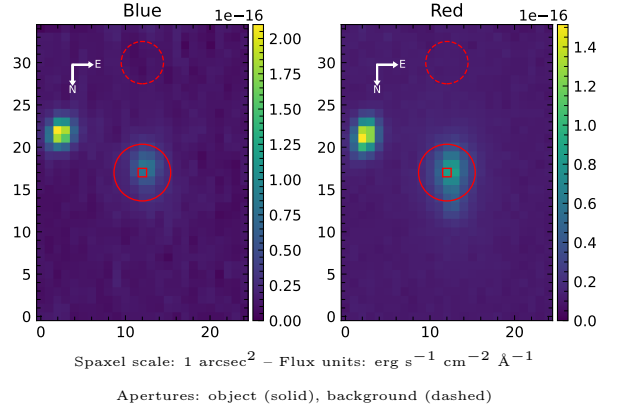


# NVSS J042938–210942

Spectrum ID	22460749_sp1	Spectrum type	Sy 1.5
Alt name	g0429383–210944	Quality flag	good
$z$	0.0702	AGN reference	6dFGS
RA, Dec	67.4096, –21.1621	MW $E(B - V)$	0.021
MJD	60939.77	Power law $\alpha_\nu$	$0.06 \pm 0.25$
SNR/ $\text{\AA}$ B/R	12.8/25.0	$\log L_{5100, \text{AGN}}$	$43.35 \pm 0.05$
Obs airmass	1.02	$\log H\beta_{\text{Br}}/[\text{O III}]$	$-0.14 \pm 0.02$
SMSS ID	22460749	$\log M_{L5100}/M_\odot$	$8.66 \pm 0.16$
Neighbour	10.9", 22460748	$\log M_{H\alpha}/M_\odot$	$8.02 \pm 0.04$
SMSS $\langle r_6^{\text{ap}} \rangle$	$15.37 \pm 0.20$	$\log M_{H\beta}/M_\odot$	$8.80 \pm 0.16$
2MASS $K_{\text{ext}}$	$11.89 \pm 0.07$	$\log M_{[\text{O III}]} / M_\odot$	$9.03 \pm 0.16$



## Emission Line Measurements

Line	$\log L$ ( $\text{erg s}^{-1}$ )	FWHM ( $\text{km s}^{-1}$ )	$\sigma$ ( $\text{km s}^{-1}$ )	EW ( $\text{\AA}$ )
H $\gamma$ Narrow	$40.58 \pm 0.12$	$575 \pm 63$	$376 \pm 26$	$6.27 \pm 0.93$
<b>H<math>\gamma</math> Broad</b>	<b><math>40.74 \pm 0.20</math></b>	<b><math>1661 \pm 679</math></b>	<b><math>1678 \pm 218</math></b>	<b><math>8.44 \pm 1.99</math></b>
[O III] 4364	$40.55 \pm 0.08$	$552 \pm 63$	$234 \pm 25$	$5.93 \pm 0.65$
He II Narrow	$40.28 \pm 0.20$	$552 \pm 63$	$234 \pm 25$	$3.67 \pm 0.61$
<b>He II Broad</b>	<b><math>40.30 \pm 0.29</math></b>	<b><math>1179 \pm 62</math></b>	<b><math>500 \pm 25</math></b>	<b><math>3.84 \pm 0.88</math></b>
H $\beta$ Narrow	$41.03 \pm 0.03$	$575 \pm 63$	$376 \pm 26$	$22.24 \pm 1.04$
<b>H<math>\beta</math> Broad</b>	<b><math>41.85 \pm 0.02</math></b>	<b><math>10381 \pm 1856</math></b>	<b><math>5220 \pm 44</math></b>	<b><math>150.86 \pm 5.13</math></b>
[O III] 5007	$41.99 \pm 0.01$	$575 \pm 63$	$376 \pm 26$	$217.26 \pm 1.35$
He I Narrow	$40.06 \pm 0.13$	$552 \pm 63$	$234 \pm 25$	$3.55 \pm 0.69$
<b>He I Broad</b>	<b><math>40.98 \pm 0.11</math></b>	<b><math>13217 \pm 67</math></b>	<b><math>5613 \pm 27</math></b>	<b><math>29.23 \pm 4.59</math></b>
[O I] 6300	$40.72 \pm 0.03$	$552 \pm 63$	$234 \pm 25$	$18.47 \pm 0.70$
H $\alpha$ Narrow	$41.53 \pm 0.01$	$552 \pm 63$	$234 \pm 25$	$129.41 \pm 1.07$
<b>H<math>\alpha</math> Broad</b>	<b><math>42.32 \pm 0.01</math></b>	<b><math>4545 \pm 221</math></b>	<b><math>2392 \pm 25</math></b>	<b><math>809.96 \pm 3.51</math></b>
[N II] 6585	$41.45 \pm 0.01$	$552 \pm 63$	$234 \pm 25$	$110.45 \pm 1.05$
[S II] 6718	$40.97 \pm 0.02$	$552 \pm 63$	$234 \pm 25$	$37.92 \pm 1.01$
[S II] 6732	$40.95 \pm 0.02$	$552 \pm 63$	$234 \pm 25$	$35.99 \pm 0.97$

## Emission Summary

H $\alpha$ broad SNR	14.74
H $\beta$ broad SNR	3.35
H $\gamma$ broad SNR	1.06
AGN frac	0.35
Host frac	0.65
$\log L_{5100, \text{Host}}$	43.62
Fe II/H $\beta$	0.44
Fe II/[O III]	0.32

## Quality Flags

spurious_hab/hbb	0/0
15100	1
balmer	0
balmer_snr	1
hb_width	1
balmer_width	1