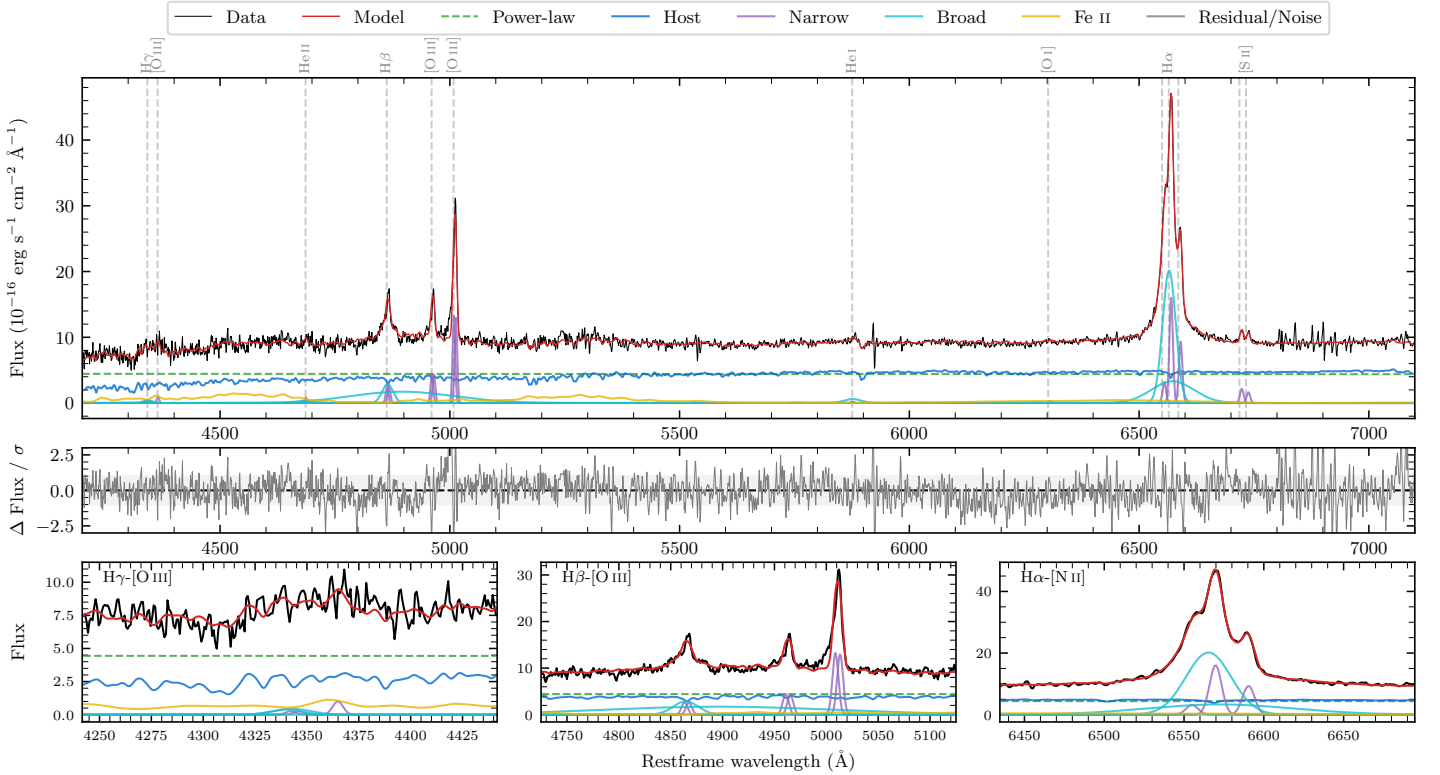
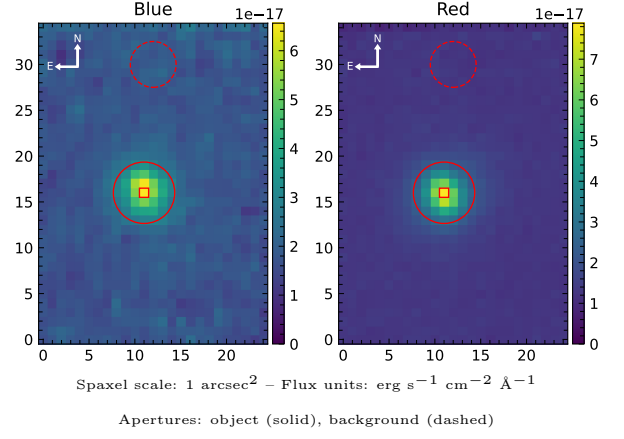


LEDA 3080622

Spectrum ID	22453315_sp1	Spectrum type	Sy 1.2
Alt name	g0422566-185442	Quality flag	good
z	0.0642	AGN reference	6dFGS
RA, Dec	65.7357, -18.9117	MW $E(B - V)$	0.040
MJD	60562.76	Power law α_ν	-1.97 ± 0.02
SNR/ \AA B/R	12.7/26.2	$\log L_{5100, \text{AGN}}$	43.35 ± 0.02
Obs airmass	1.06	$\log H\beta_{\text{Br}}/[\text{O III}]$	0.48 ± 0.02
SMSS ID	22453315	$\log M_{L5100}/M_\odot$	7.44 ± 0.06
Neighbour	None $< 15''$	$\log M_{H\alpha}/M_\odot$	7.00 ± 0.03
SMSS $\langle r_6 \rangle_{\text{ap}}$	16.02 ± 0.07	$\log M_{H\beta}/M_\odot$	7.55 ± 0.06
2MASS K_{ext}	11.46 ± 0.03	$\log M_{[\text{O III}]} / M_\odot$	7.48 ± 0.06



Emission Line Measurements

Line	$\log L$ (erg s^{-1})	FWHM (km s^{-1})	σ (km s^{-1})	EW (\AA)
H γ Narrow	39.52 ± 0.46	572 ± 63	219 ± 25	0.76 ± 0.52
Hγ Broad	40.33 ± 0.16	1357 ± 99	505 ± 33	4.14 ± 0.91
[O III] 4364	39.82 ± 0.24	406 ± 63	172 ± 25	1.51 ± 0.47
He II Narrow	39.78 ± 0.26	406 ± 63	172 ± 25	1.37 ± 0.43
He II Broad	40.28 ± 0.22	2850 ± 63	1210 ± 25	4.34 ± 1.13
H β Narrow	40.59 ± 0.06	572 ± 63	219 ± 25	8.84 ± 0.50
Hβ Broad	41.78 ± 0.02	2570 ± 175	5186 ± 58	138.29 ± 3.37
[O III] 5007	41.30 ± 0.01	572 ± 63	219 ± 25	45.51 ± 0.53
He I Narrow	39.30 ± 0.37	406 ± 63	172 ± 25	0.46 ± 0.27
He I Broad	40.48 ± 0.08	2223 ± 63	944 ± 25	6.89 ± 0.63
[O I] 6300	39.46 ± 0.24	406 ± 63	172 ± 25	0.66 ± 0.22
H α Narrow	41.20 ± 0.01	406 ± 63	172 ± 25	36.83 ± 0.37
Hα Broad	42.06 ± 0.01	1684 ± 63	844 ± 25	266.87 ± 0.99
[N II] 6585	40.97 ± 0.01	406 ± 63	172 ± 25	21.48 ± 0.32
[S II] 6718	40.35 ± 0.03	406 ± 63	172 ± 25	5.10 ± 0.25
[S II] 6732	40.22 ± 0.05	406 ± 63	172 ± 25	3.86 ± 0.26

Emission Summary

H α broad SNR	32.83
H β broad SNR	6.36
H γ broad SNR	1.37
AGN frac	0.53
Host frac	0.47
$\log L_{5100, \text{Host}}$	43.30
Fe II/H β	0.59
Fe II/[O III]	1.79

Quality Flags

spurious_hab/hbb	0/0
15100	0
balmer	0
balmer_snr	1
hb_width	2
balmer_width	0