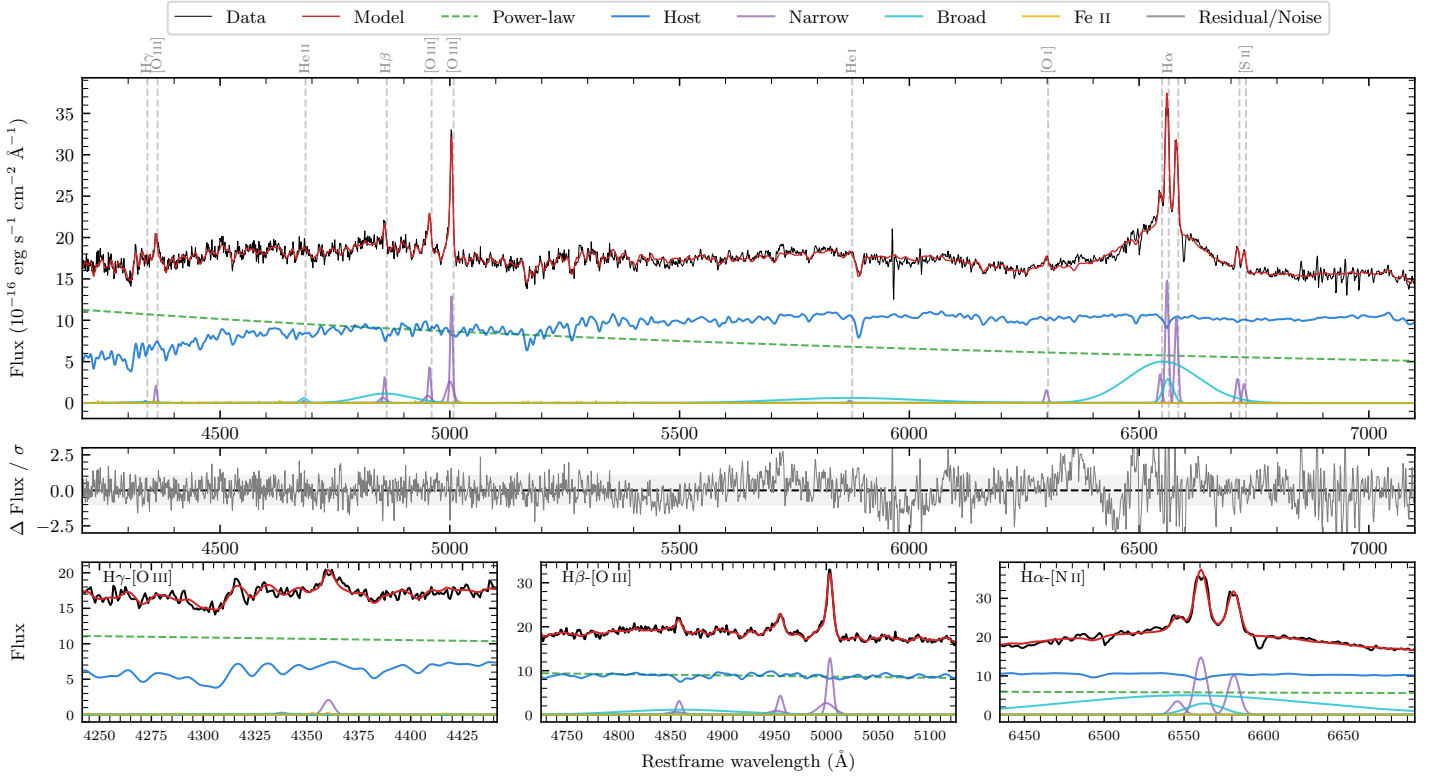
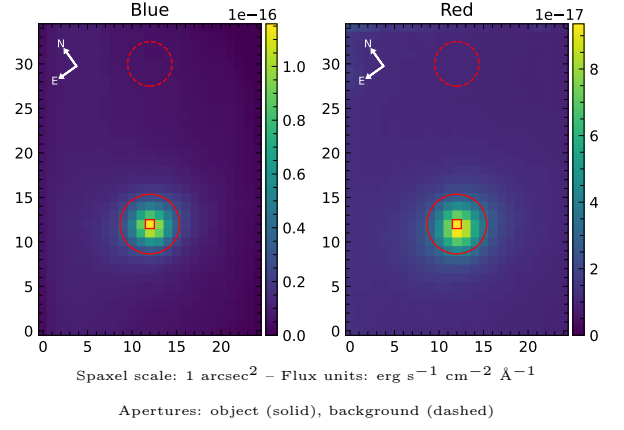


# LEDA 199154

Spectrum ID	2245228_sp2	Spectrum type	Sy 1.5
Alt name	g2253587-330014	Quality flag	good
$z$	0.0552	AGN reference	6dFGS
RA, Dec	343.4945, -33.0038	MW $E(B - V)$	0.016
MJD	59027.6	Power law $\alpha_\nu$	$-0.49 \pm 0.10$
SNR/ $\text{\AA}$ B/R	25.9/43.6	$\log L_{5100, \text{AGN}}$	$43.51 \pm 0.02$
Obs airmass	1.60	$\log H\beta_{\text{Br}}/[\text{O III}]$	$0.06 \pm 0.04$
SMSS ID	2245228	$\log M_{L5100}/M_\odot$	$8.40 \pm 0.08$
Neighbour	9.9", 2004123385	$\log M_{\text{H}\alpha}/M_\odot$	$7.84 \pm 0.06$
SMSS $\langle r_{6'' \text{ap}} \rangle$	$15.79 \pm 0.09$	$\log M_{\text{H}\beta}/M_\odot$	$8.13 \pm 0.09$
2MASS $K_{\text{ext}}$	$11.62 \pm 0.05$	$\log M_{[\text{O III}]} / M_\odot$	$8.24 \pm 0.08$



## Emission Line Measurements

Line	$\log L$ (erg s $^{-1}$ )	FWHM (km s $^{-1}$ )	$\sigma$ (km s $^{-1}$ )	EW (Angstrom)
H $\gamma$ Narrow	—	—	—	—
<b>H<math>\gamma</math> Broad</b>	—	—	—	—
[O III] 4364	$40.01 \pm 0.11$	$401 \pm 63$	$169 \pm 25$	$1.28 \pm 0.19$
He II Narrow	$39.19 \pm 0.47$	$401 \pm 63$	$169 \pm 25$	$0.22 \pm 0.19$
<b>He II Broad</b>	<b><math>39.97 \pm 0.22</math></b>	<b><math>1178 \pm 62</math></b>	<b><math>500 \pm 25</math></b>	<b><math>1.29 \pm 0.34</math></b>
H $\beta$ Narrow	$40.43 \pm 0.06$	$447 \pm 63$	$322 \pm 27$	$3.89 \pm 0.31$
<b>H<math>\beta</math> Broad</b>	<b><math>41.11 \pm 0.04</math></b>	<b><math>7117 \pm 664</math></b>	<b><math>2882 \pm 36</math></b>	<b><math>18.60 \pm 0.87</math></b>
[O III] 5007	$41.05 \pm 0.01$	$447 \pm 63$	$322 \pm 27$	$17.31 \pm 0.33$
He I Narrow	$39.32 \pm 0.27$	$401 \pm 63$	$169 \pm 25$	$0.41 \pm 0.17$
<b>He I Broad</b>	<b><math>41.26 \pm 0.03</math></b>	<b><math>17661 \pm 62</math></b>	<b><math>7500 \pm 25</math></b>	<b><math>35.64 \pm 1.37</math></b>
[O I] 6300	$40.04 \pm 0.05$	$401 \pm 63$	$169 \pm 25$	$2.40 \pm 0.18$
H $\alpha$ Narrow	$41.04 \pm 0.01$	$401 \pm 63$	$169 \pm 25$	$25.32 \pm 0.25$
<b>H<math>\alpha</math> Broad</b>	<b><math>41.92 \pm 0.01</math></b>	<b><math>4921 \pm 366</math></b>	<b><math>2867 \pm 25</math></b>	<b><math>192.39 \pm 1.02</math></b>
[N II] 6585	$40.88 \pm 0.01$	$401 \pm 63$	$169 \pm 25$	$17.66 \pm 0.24$
[S II] 6718	$40.34 \pm 0.03$	$401 \pm 63$	$169 \pm 25$	$5.30 \pm 0.21$
[S II] 6732	$40.24 \pm 0.03$	$401 \pm 63$	$169 \pm 25$	$4.22 \pm 0.20$

## Emission Summary

H $\alpha$ broad SNR	11.70
H $\beta$ broad SNR	1.98
H $\gamma$ broad SNR	0.49
AGN frac	0.49
Host frac	0.51
$\log L_{5100, \text{Host}}$	43.52
Fe II/H $\beta$	—
Fe II/[O III]	—

## Quality Flags

spurious_hab/hbb	0/0
15100	1
balmer	1
balmer_snr	2
hb_width	0
balmer_width	0