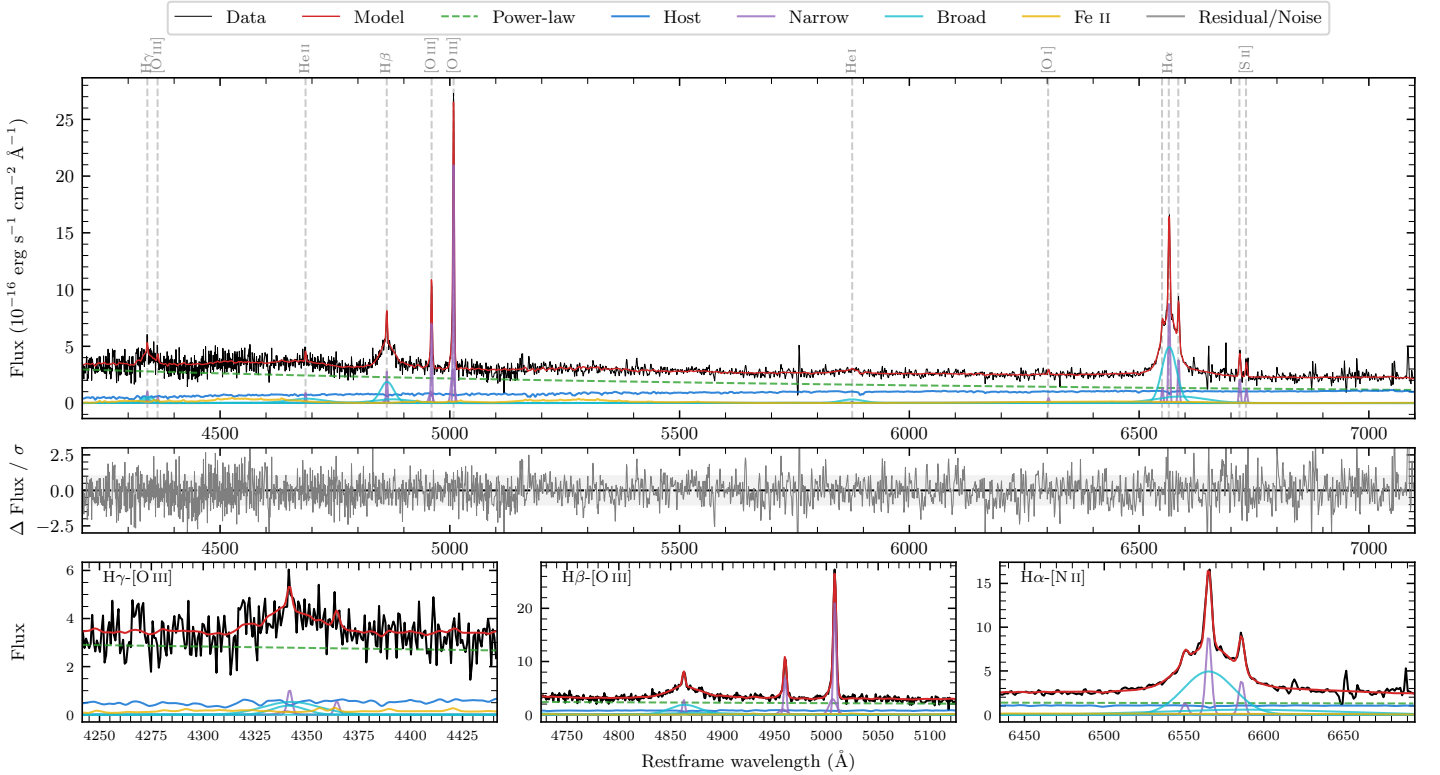
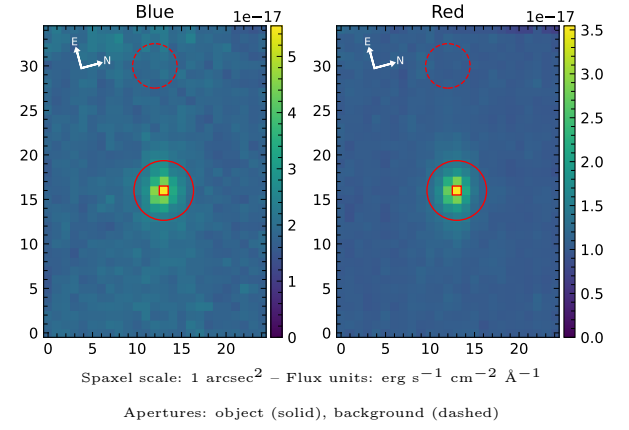


6dFGS gJ041421.6–190819

Spectrum ID	22440116_sp1	Spectrum type	Sy 1.5
Alt name	g0414216–190819	Quality flag	good
z	0.0944	AGN reference	6dFGS
RA, Dec	63.5900, –19.1386	MW $E(B - V)$	0.024
MJD	60266.54	Power law α_ν	-0.20 ± 0.20
SNR/Å B/R	7.4/9.9	$\log L_{5100, \text{AGN}}$	43.38 ± 0.03
Obs airmass	1.11	$\log H\beta_{\text{Br}}/[\text{O III}]$	0.02 ± 0.03
SMSS ID	22440116	$\log M_{L5100}/M_\odot$	7.39 ± 0.06
Neighbour	None $< 15''$	$\log M_{\text{H}\alpha}/M_\odot$	6.92 ± 0.03
SMSS $\langle r_6''_{\text{ap}} \rangle$	17.91 ± 0.04	$\log M_{\text{H}\beta}/M_\odot$	7.32 ± 0.06
2MASS K_{ext}	nan \pm nan	$\log M_{[\text{O III}]} / M_\odot$	7.45 ± 0.06



Emission Line Measurements

Line	$\log L$ (erg s^{-1})	FWHM (km s^{-1})	σ (km s^{-1})	EW (\AA)
H γ Narrow	40.01 ± 0.20	209 ± 63	141 ± 27	1.64 ± 0.73
Hγ Broad	40.83 ± 0.10	1837 ± 321	685 ± 98	9.99 ± 1.32
[O III] 4364	39.61 ± 0.30	199 ± 63	81 ± 25	0.65 ± 0.35
He II Narrow	39.85 ± 0.17	199 ± 63	81 ± 25	1.31 ± 0.34
He II Broad	40.98 ± 0.08	5926 ± 390	2516 ± 166	17.22 ± 1.93
H β Narrow	40.49 ± 0.06	209 ± 63	141 ± 27	6.03 ± 0.61
Hβ Broad	41.41 ± 0.03	2375 ± 150	1111 ± 129	49.84 ± 2.12
[O III] 5007	41.38 ± 0.01	209 ± 63	141 ± 27	49.89 ± 0.68
He I Narrow	39.06 ± 0.42	199 ± 63	81 ± 25	0.32 ± 0.28
He I Broad	40.70 ± 0.07	2993 ± 337	1271 ± 143	13.40 ± 1.34
[O I] 6300	39.68 ± 0.16	199 ± 63	81 ± 25	1.51 ± 0.40
H α Narrow	41.00 ± 0.01	199 ± 63	81 ± 25	33.65 ± 0.56
Hα Broad	41.83 ± 0.01	1819 ± 70	884 ± 42	226.18 ± 2.73
[N II] 6585	40.63 ± 0.03	199 ± 63	81 ± 25	14.45 ± 0.48
[S II] 6718	40.38 ± 0.03	199 ± 63	81 ± 25	8.37 ± 0.48
[S II] 6732	40.15 ± 0.07	199 ± 63	81 ± 25	4.99 ± 0.60

Emission Summary

H α broad SNR	12.17
H β broad SNR	4.87
H γ broad SNR	2.13
AGN frac	0.74
Host frac	0.26
$\log L_{5100, \text{Host}}$	42.93
Fe II/H β	0.84
Fe II/[O III]	0.88

Quality Flags

spurious_hab/hbb	0/0
15100	0
balmer	0
balmer_snr	1
hb_width	0
balmer_width	0