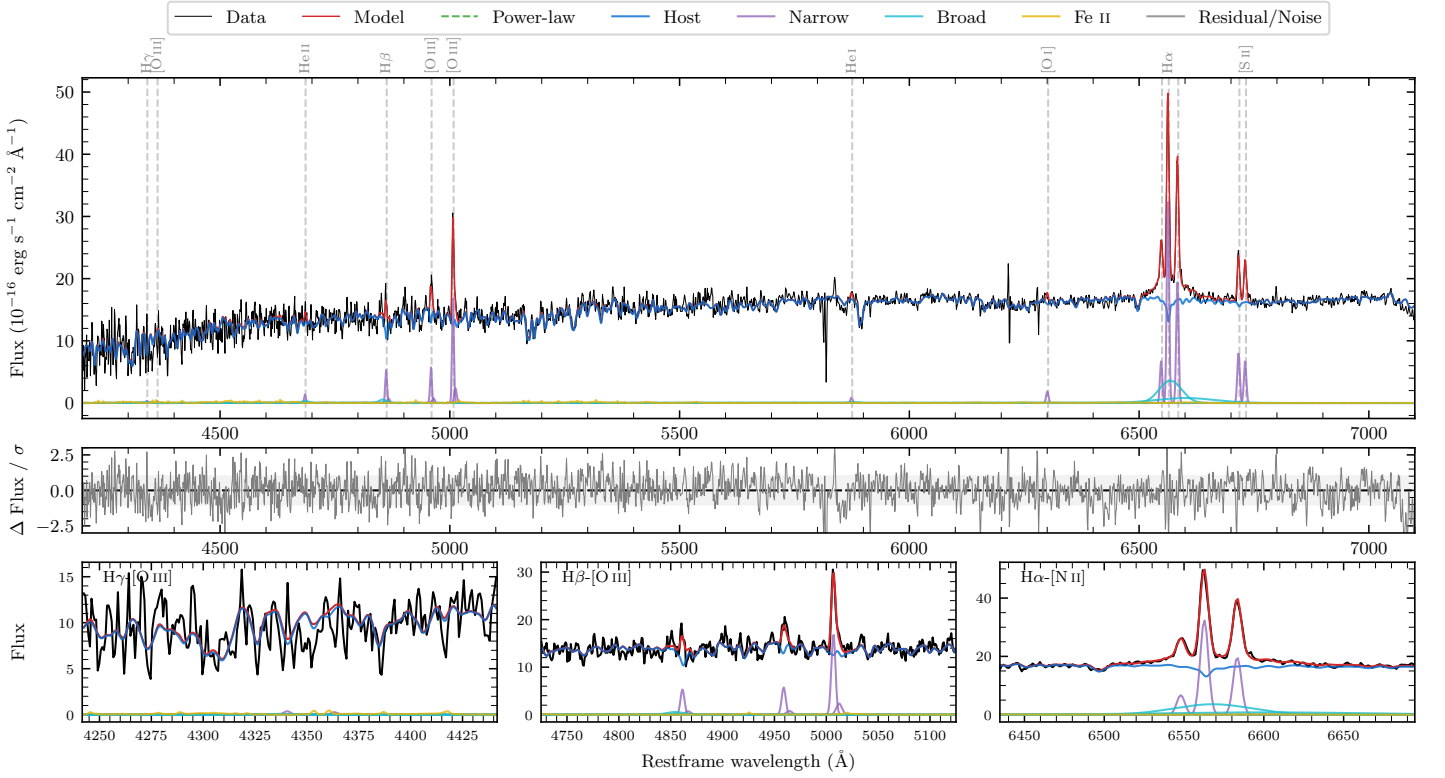
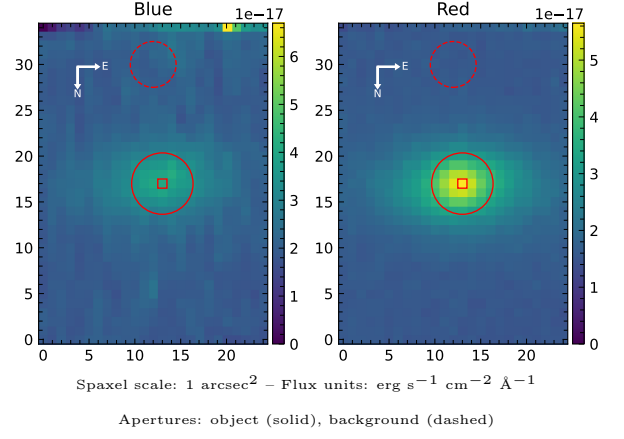


# MCG+00-11-002

Spectrum ID	22311641_sp1	Spectrum type	Sy 1.5+
Alt name	g0357587-001126	Quality flag	good
$z$	0.0134	AGN reference	6dFGS
RA, Dec	59.4944, -0.1905	MW $E(B-V)$	0.257
MJD	60552.77	Power law $\alpha_\nu$	$0.48 \pm 0.02$
SNR/ $\text{\AA}$ B/R	10.4/23.1	$\log L_{5100, \text{AGN}}$	$39.72 \pm 0.72$
Obs airmass	1.21	$\log H\beta_{\text{Br}}/[\text{O III}]$	$< -0.17$
SMSS ID	22311641	$\log M_{L5100}/M_\odot$	—
Neighbour	13.1", 2044937315	$\log M_{\text{H}\alpha}/M_\odot$	$6.33 \pm 0.08$
SMSS $\langle r_{6'' \text{ap}} \rangle$	$16.15 \pm 0.06$	$\log M_{\text{H}\beta}/M_\odot$	—
2MASS $K_{\text{ext}}$	$11.25 \pm 0.05$	$\log M_{[\text{O III}]} / M_\odot$	—



## Emission Line Measurements

Line	$\log L$ (erg s $^{-1}$ )	FWHM (km s $^{-1}$ )	$\sigma$ (km s $^{-1}$ )	EW (Angstroms)
H $\gamma$ Narrow	—	—	—	—
<b>H<math>\gamma</math> Broad</b>	—	—	—	—
[O III] 4364	—	—	—	—
He II Narrow	$38.43 \pm 0.31$	$279 \pm 62$	$117 \pm 25$	$210.96 \pm 92.99$
<b>He II Broad</b>	<b><math>38.47 \pm 0.48</math></b>	<b><math>1235 \pm 62</math></b>	<b><math>524 \pm 25</math></b>	<b><math>232.27 \pm 184.81</math></b>
H $\beta$ Narrow	$39.11 \pm 0.08$	$294 \pm 63$	$176 \pm 27$	$1122.22 \pm 117.84$
<b>H<math>\beta</math> Broad</b>	$< 39.46$	—	—	—
[O III] 5007	$39.63 \pm 0.02$	$294 \pm 63$	$176 \pm 27$	$4007.79 \pm 120.70$
He I Narrow	$38.33 \pm 0.36$	$279 \pm 62$	$117 \pm 25$	$298.09 \pm 156.19$
<b>He I Broad</b>	—	—	—	—
[O I] 6300	$38.69 \pm 0.15$	$279 \pm 62$	$117 \pm 25$	$807.00 \pm 152.79$
H $\alpha$ Narrow	$39.95 \pm 0.01$	$279 \pm 62$	$117 \pm 25$	$16247.65 \pm 140.95$
<b>H<math>\alpha</math> Broad</b>	<b><math>40.17 \pm 0.02</math></b>	<b><math>2946 \pm 99</math></b>	<b><math>1402 \pm 67</math></b>	<b><math>27366.46 \pm 686.19</math></b>
[N II] 6585	$39.73 \pm 0.01$	$279 \pm 62$	$117 \pm 25$	$9960.70 \pm 136.58$
[S II] 6718	$39.35 \pm 0.02$	$279 \pm 62$	$117 \pm 25$	$4333.69 \pm 133.25$
[S II] 6732	$39.28 \pm 0.03$	$279 \pm 62$	$117 \pm 25$	$3696.62 \pm 157.82$

## Emission Summary

H $\alpha$ broad SNR	3.11
H $\beta$ broad SNR	0.62
H $\gamma$ broad SNR	0.00
AGN frac	0.00
Host frac	1.00
$\log L_{5100, \text{Host}}$	42.45
Fe II/H $\beta$	—
Fe II/[O III]	0.45

## Quality Flags

spurious_hab/hbb	0/0
15100	2
balmer	2
balmer_snr	2
hb_width	2
balmer_width	2