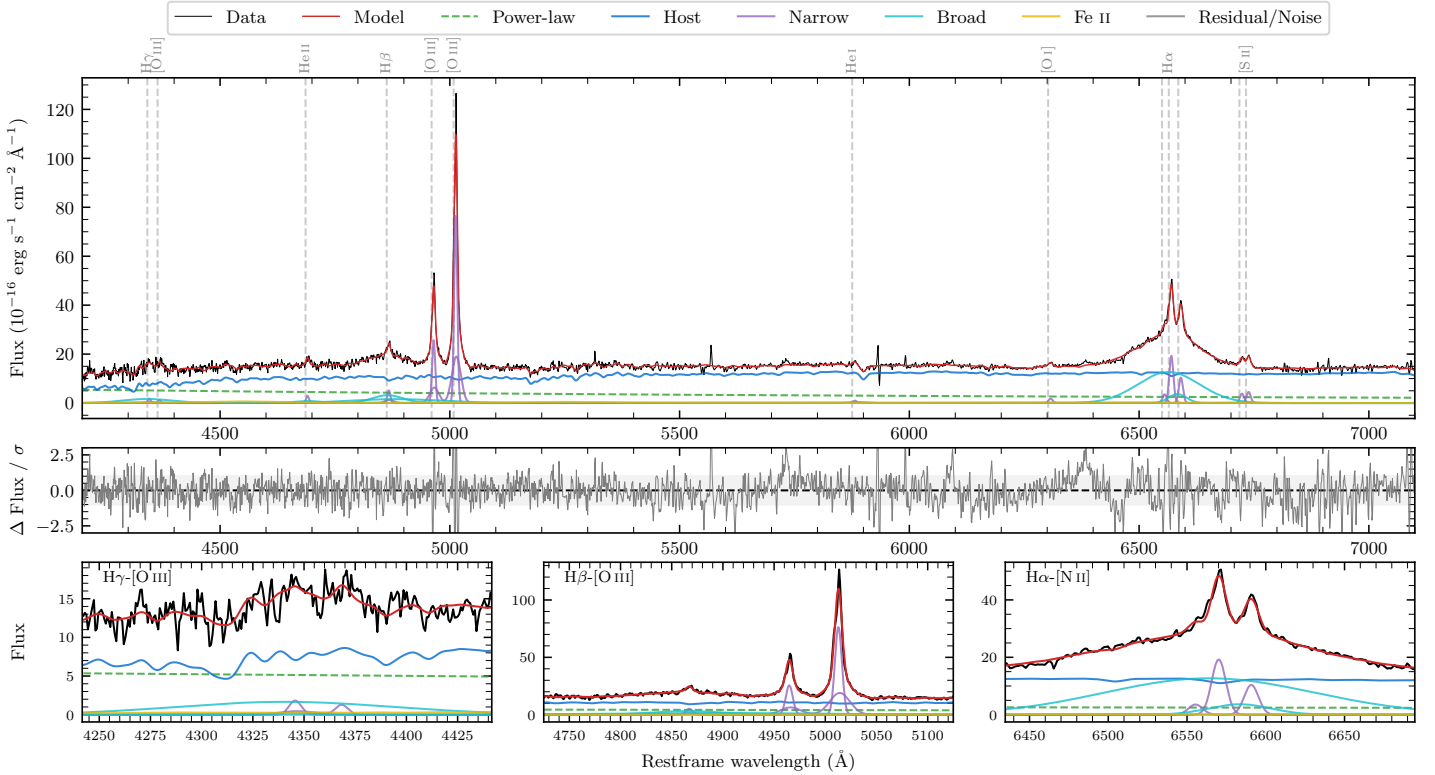
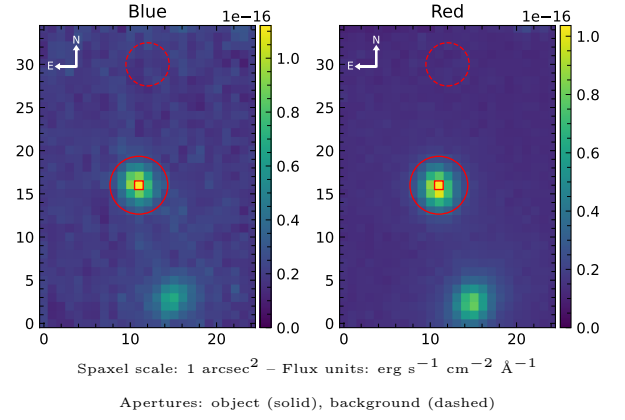


# LEDA 1043483

Spectrum ID	22201714_sp1	Spectrum type	Sy 1.5
Alt name	g0358201-053207	Quality flag	good
$z$	0.0632	AGN reference	6dFGS
RA, Dec	59.5837, -5.5352	MW $E(B - V)$	0.102
MJD	60553.78	Power law $\alpha_\nu$	$-0.24 \pm 0.33$
SNR/ $\text{\AA}$ B/R	12.6/23.4	$\log L_{5100, \text{AGN}}$	$43.27 \pm 0.05$
Obs airmass	1.13	$\log H\beta_{\text{Br}}/[\text{O III}]$	$-0.23 \pm 0.03$
SMSS ID	22201714	$\log M_{L5100}/M_\odot$	$8.18 \pm 0.07$
Neighbour	13.5", 22201713	$\log M_{\text{H}\alpha}/M_\odot$	$8.27 \pm 0.03$
SMSS $\langle r_6'' \text{ap} \rangle$	$15.89 \pm 0.03$	$\log M_{\text{H}\beta}/M_\odot$	$8.33 \pm 0.06$
2MASS $K_{\text{ext}}$	$11.56 \pm 0.07$	$\log M_{[\text{O III}]} / M_\odot$	$8.61 \pm 0.06$



## Emission Line Measurements

Line	$\log L$ (erg s <sup>-1</sup> )	FWHM (km s <sup>-1</sup> )	$\sigma$ (km s <sup>-1</sup> )	EW (Å)
H $\gamma$ Narrow	$40.36 \pm 0.16$	$552 \pm 63$	$408 \pm 26$	$4.83 \pm 1.25$
<b>H<math>\gamma</math> Broad</b>	<b><math>41.36 \pm 0.07</math></b>	<b><math>7826 \pm 909</math></b>	<b><math>3116 \pm 163</math></b>	<b><math>47.45 \pm 3.39</math></b>
[O III] 4364	$39.97 \pm 0.25$	$482 \pm 63$	$204 \pm 25$	$1.98 \pm 0.75$
He II Narrow	$40.37 \pm 0.10$	$482 \pm 63$	$204 \pm 25$	$5.60 \pm 0.76$
<b>He II Broad</b>	<b><math>40.79 \pm 0.13</math></b>	<b><math>4520 \pm 300</math></b>	<b><math>1919 \pm 127</math></b>	<b><math>14.68 \pm 2.28</math></b>
H $\beta$ Narrow	$40.86 \pm 0.05$	$552 \pm 63$	$408 \pm 26$	$18.55 \pm 1.35$
<b>H<math>\beta</math> Broad</b>	<b><math>41.81 \pm 0.03</math></b>	<b><math>6219 \pm 432</math></b>	<b><math>3591 \pm 198</math></b>	<b><math>167.78 \pm 4.73</math></b>
[O III] 5007	$42.05 \pm 0.01$	$552 \pm 63$	$408 \pm 26$	$298.94 \pm 1.59$
He I Narrow	$40.00 \pm 0.18$	$482 \pm 63$	$204 \pm 25$	$3.59 \pm 0.75$
<b>He I Broad</b>	<b><math>40.30 \pm 0.20</math></b>	<b><math>2237 \pm 306</math></b>	<b><math>950 \pm 129</math></b>	<b><math>7.17 \pm 1.69</math></b>
[O I] 6300	$40.29 \pm 0.07$	$482 \pm 63$	$204 \pm 25$	$7.92 \pm 0.76$
H $\alpha$ Narrow	$41.33 \pm 0.02$	$482 \pm 63$	$204 \pm 25$	$92.98 \pm 1.18$
<b>H<math>\alpha</math> Broad</b>	<b><math>42.36 \pm 0.01</math></b>	<b><math>5956 \pm 172</math></b>	<b><math>2520 \pm 29</math></b>	<b><math>984.81 \pm 3.97</math></b>
[N II] 6585	$41.06 \pm 0.03$	$482 \pm 63$	$204 \pm 25$	$50.61 \pm 1.12$
[S II] 6718	$40.64 \pm 0.03$	$482 \pm 63$	$204 \pm 25$	$19.77 \pm 0.93$
[S II] 6732	$40.71 \pm 0.03$	$482 \pm 63$	$204 \pm 25$	$23.49 \pm 0.95$

## Emission Summary

H $\alpha$ broad SNR	13.18
H $\beta$ broad SNR	3.93
H $\gamma$ broad SNR	1.60
AGN frac	0.27
Host frac	0.73
$\log L_{5100, \text{Host}}$	43.70
Fe II/H $\beta$	0.23
Fe II/[O III]	0.14

## Quality Flags

spurious_hab/hbb	0/0
15100	1
balmer	0
balmer_snr	1
hb_width	1
balmer_width	0