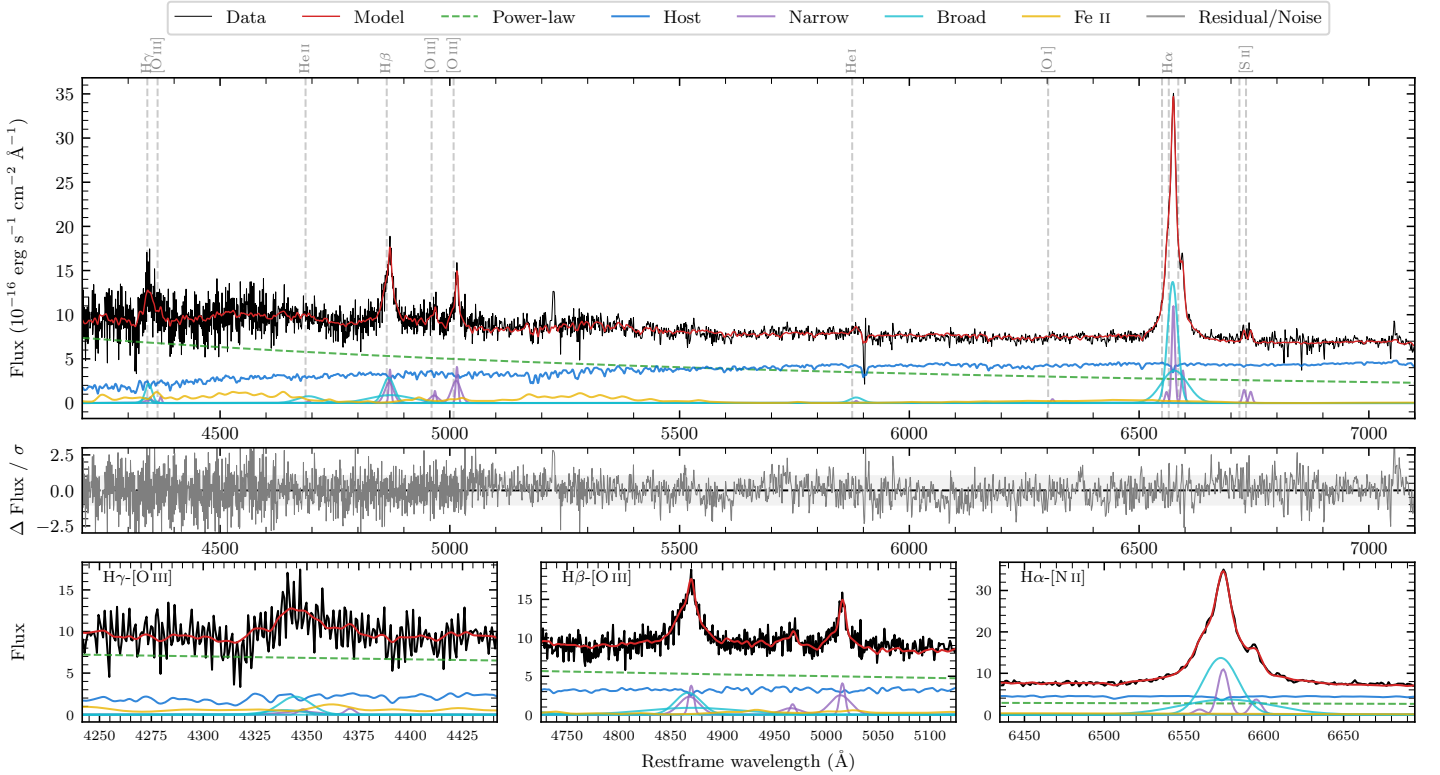
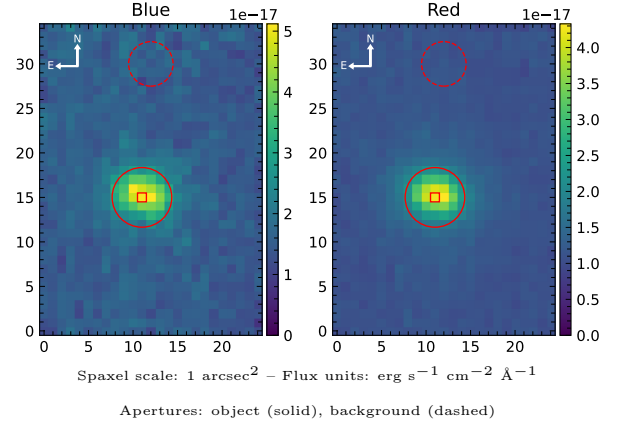


# LEDA 1044676

Spectrum ID	22116718_sp1	Spectrum type	Sy 1.2
Alt name	g0351076-052637	Quality flag	good
$z$	0.0689	AGN reference	6dFGS
RA, Dec	57.7817, -5.4437	MW $E(B - V)$	0.086
MJD	60260.58	Power law $\alpha_\nu$	$0.23 \pm 0.18$
SNR/ $\text{\AA}$ B/R	9.7/14.8	$\log L_{5100, \text{AGN}}$	$43.44 \pm 0.03$
Obs airmass	1.13	$\log H\beta_{\text{Br}}/[\text{O III}]$	$0.33 \pm 0.06$
SMSS ID	22116718	$\log M_{L5100}/M_\odot$	$7.34 \pm 0.07$
Neighbour	None $< 15''$	$\log M_{\text{H}\alpha}/M_\odot$	$6.70 \pm 0.04$
SMSS $\langle r_6''_{\text{ap}} \rangle$	$16.61 \pm 0.03$	$\log M_{\text{H}\beta}/M_\odot$	$7.22 \pm 0.08$
2MASS $K_{\text{ext}}$	$12.43 \pm 0.09$	$\log M_{[\text{O III}]} / M_\odot$	$7.20 \pm 0.08$



## Emission Line Measurements

Line	$\log L$ ( $\text{erg s}^{-1}$ )	FWHM ( $\text{km s}^{-1}$ )	$\sigma$ ( $\text{km s}^{-1}$ )	EW ( $\text{\AA}$ )
H $\gamma$ Narrow	$40.17 \pm 0.42$	$531 \pm 81$	$512 \pm 31$	$1.96 \pm 1.11$
<b>H<math>\gamma</math> Broad</b>	<b><math>40.84 \pm 0.10</math></b>	<b><math>1308 \pm 100</math></b>	<b><math>470 \pm 39</math></b>	<b><math>8.47 \pm 1.14</math></b>
[O III] 4364	$39.69 \pm 0.40$	$372 \pm 63$	$157 \pm 25$	$0.65 \pm 0.45$
He II Narrow	—	—	—	—
<b>He II Broad</b>	<b><math>40.77 \pm 0.11</math></b>	<b><math>3815 \pm 63</math></b>	<b><math>1620 \pm 25</math></b>	<b><math>9.07 \pm 1.36</math></b>
H $\beta$ Narrow	$40.99 \pm 0.10$	$531 \pm 81$	$512 \pm 31$	$16.34 \pm 0.91$
<b>H<math>\beta</math> Broad</b>	<b><math>41.36 \pm 0.05</math></b>	<b><math>2172 \pm 173</math></b>	<b><math>1435 \pm 137</math></b>	<b><math>38.72 \pm 1.90</math></b>
[O III] 5007	$41.03 \pm 0.03$	$531 \pm 81$	$512 \pm 31$	$19.46 \pm 0.95$
He I Narrow	$39.37 \pm 0.43$	$372 \pm 63$	$157 \pm 25$	$0.60 \pm 0.42$
<b>He I Broad</b>	<b><math>40.43 \pm 0.11</math></b>	<b><math>1731 \pm 64</math></b>	<b><math>735 \pm 26</math></b>	<b><math>6.98 \pm 1.10</math></b>
[O I] 6300	$39.64 \pm 0.23$	$372 \pm 63$	$157 \pm 25$	$1.31 \pm 0.44$
H $\alpha$ Narrow	$41.05 \pm 0.03$	$372 \pm 63$	$157 \pm 25$	$37.27 \pm 0.69$
<b>H<math>\alpha</math> Broad</b>	<b><math>41.88 \pm 0.01</math></b>	<b><math>1357 \pm 64</math></b>	<b><math>604 \pm 25</math></b>	<b><math>251.30 \pm 1.72</math></b>
[N II] 6585	$40.58 \pm 0.04$	$372 \pm 63$	$157 \pm 25$	$12.66 \pm 0.60$
[S II] 6718	$40.20 \pm 0.08$	$372 \pm 63$	$157 \pm 25$	$5.47 \pm 0.63$
[S II] 6732	$40.13 \pm 0.09$	$372 \pm 63$	$157 \pm 25$	$4.71 \pm 0.61$

## Emission Summary

H $\alpha$ broad SNR	18.41
H $\beta$ broad SNR	4.00
H $\gamma$ broad SNR	2.96
AGN frac	0.58
Host frac	0.42
$\log L_{5100, \text{Host}}$	43.29
Fe II/H $\beta$	1.48
Fe II/[O III]	3.15

## Quality Flags

spurious_hab/hbb	0/0
15100	0
balmer	0
balmer_snr	1
hb_width	1
balmer_width	0