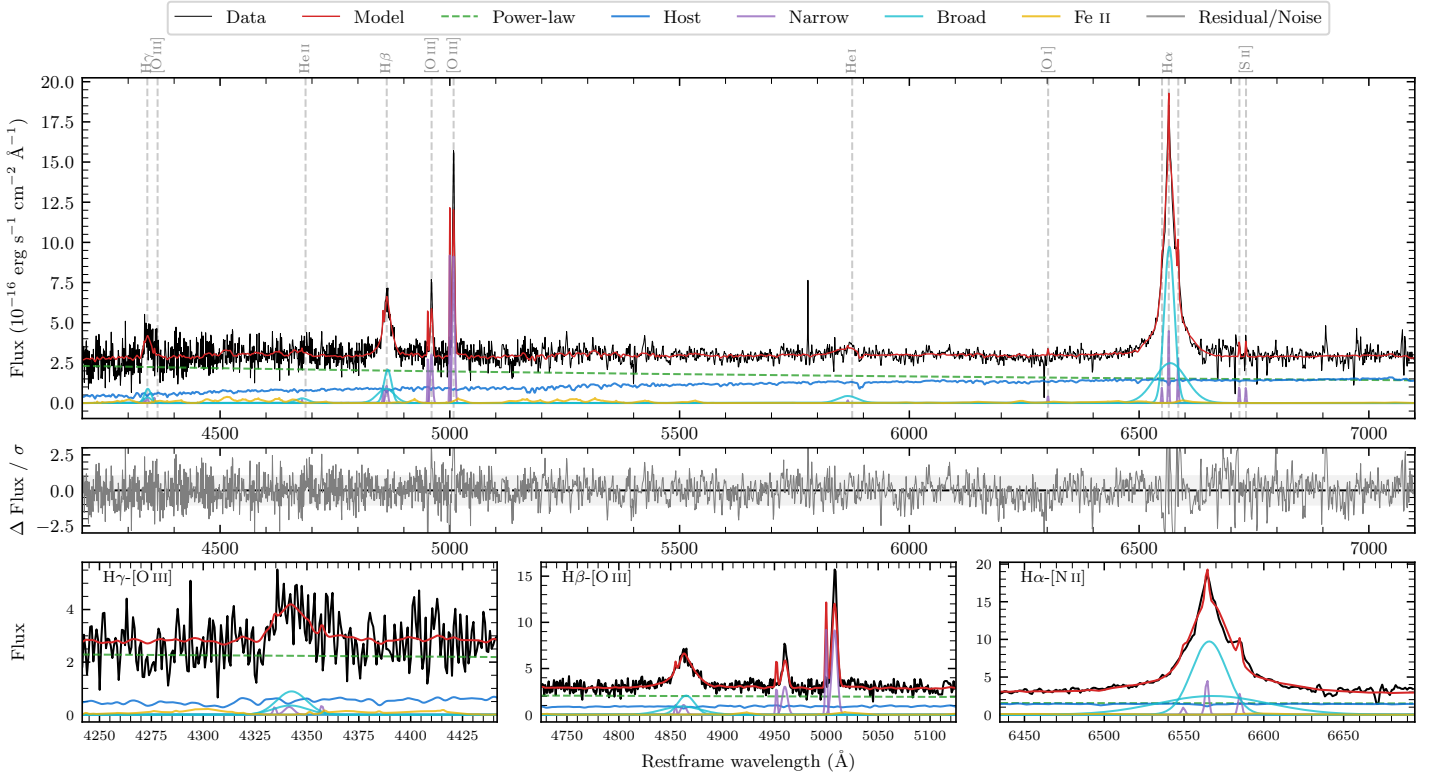
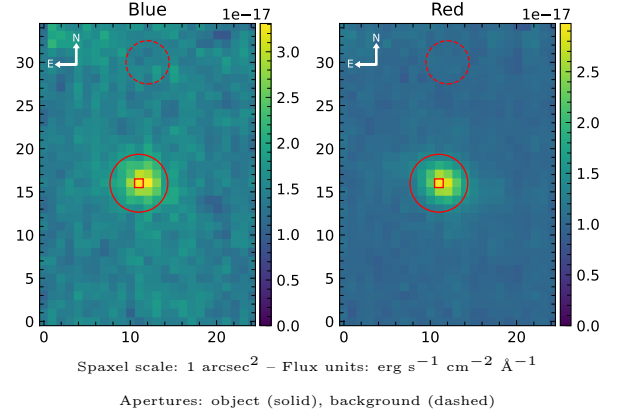


2MASS J03484060–1046088

Spectrum ID	21768301_sp1	Spectrum type	Sy 1.5
Alt name	g0348406–104609	Quality flag	good
z	0.0908	AGN reference	6dFGS
RA, Dec	57.1692, –10.7691	MW $E(B - V)$	0.030
MJD	60260.56	Power law α_ν	-1.07 ± 0.21
SNR/ \AA B/R	5.7/9.2	$\log L_{5100, \text{AGN}}$	43.31 ± 0.03
Obs airmass	1.10	$\log H\beta_{\text{Br}}/[\text{O III}]$	0.03 ± 0.04
SMSS ID	21768301	$\log M_{L5100}/M_\odot$	6.92 ± 0.07
Neighbour	None $< 15''$	$\log M_{\text{H}\alpha}/M_\odot$	6.80 ± 0.04
SMSS $\langle r_6'' \text{ap} \rangle$	17.56 ± 0.11	$\log M_{\text{H}\beta}/M_\odot$	6.82 ± 0.07
2MASS K_{ext}	13.42 ± 0.17	$\log M_{[\text{O III}]} / M_\odot$	6.95 ± 0.07



Emission Line Measurements

Line	$\log L$ (erg s ⁻¹)	FWHM (km s ⁻¹)	σ (km s ⁻¹)	EW (Å)
H γ Narrow	39.70 ± 0.48	–	249 ± 25	1.08 ± 0.74
Hγ Broad	40.76 ± 0.10	1224 ± 76	438 ± 27	11.39 ± 1.41
[O III] 4364	–	–	–	–
He II Narrow	–	–	–	–
He II Broad	40.36 ± 0.21	2078 ± 63	883 ± 25	5.30 ± 1.64
H β Narrow	40.30 ± 0.17	–	249 ± 25	4.80 ± 0.76
Hβ Broad	41.28 ± 0.04	1433 ± 102	666 ± 51	45.34 ± 2.02
[O III] 5007	41.25 ± 0.01	–	249 ± 25	43.60 ± 0.81
He I Narrow	39.00 ± 0.47	122 ± 62	50 ± 25	0.28 ± 0.28
He I Broad	40.73 ± 0.08	2599 ± 62	1104 ± 25	15.28 ± 1.80
[O I] 6300	39.43 ± 0.33	122 ± 62	50 ± 25	0.83 ± 0.43
H α Narrow	40.47 ± 0.04	122 ± 62	50 ± 25	9.41 ± 0.43
Hα Broad	42.04 ± 0.01	1364 ± 63	732 ± 25	346.80 ± 2.77
[N II] 6585	40.24 ± 0.06	122 ± 62	50 ± 25	5.56 ± 0.43
[S II] 6718	39.82 ± 0.14	122 ± 62	50 ± 25	2.16 ± 0.45
[S II] 6732	39.80 ± 0.26	122 ± 62	50 ± 25	2.04 ± 0.68

Emission Summary

H α broad SNR	22.26
H β broad SNR	5.39
H γ broad SNR	2.43
AGN frac	0.69
Host frac	0.31
$\log L_{5100, \text{Host}}$	42.96
Fe II/H β	0.58
Fe II/[O III]	0.62

Quality Flags

spurious_hab/hbb	0/0
15100	0
balmer	0
balmer_snr	1
hb_width	0
balmer_width	0