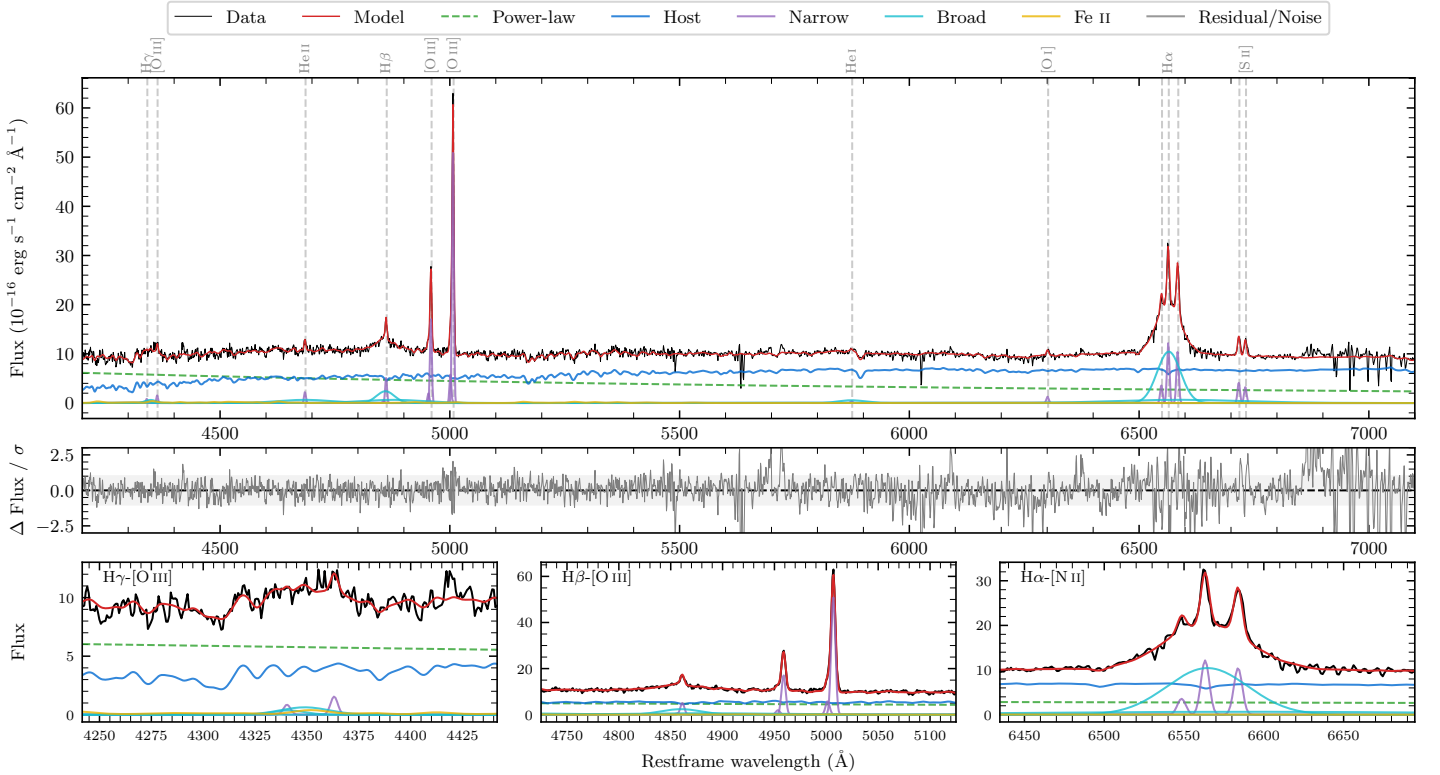
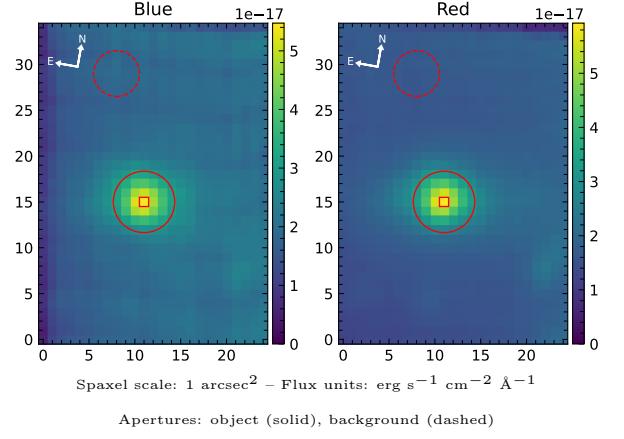


LEDA 207716

Spectrum ID	216993546_sp1	Spectrum type	Sy 1.5
Alt name	g1839358-354124	Quality flag	good
z	0.0453	AGN reference	6dFGS
RA, Dec	279.8993, -35.6899	MW $E(B - V)$	0.108
MJD	60471.63	Power law α_ν	-0.19 ± 0.24
SNR/ \AA B/R	11.4/21.6	$\log L_{5100, \text{AGN}}$	43.03 ± 0.07
Obs airmass	1.01	$\log H\beta_{\text{Br}}/[\text{O III}]$	-0.10 ± 0.04
SMSS ID	216993546	$\log M_{L5100}/M_\odot$	7.51 ± 0.06
Neighbour	11.0", 2315347210	$\log M_{\text{H}\alpha}/M_\odot$	7.21 ± 0.03
SMSS $\langle r_6''_{\text{ap}} \rangle$	16.13 ± 0.04	$\log M_{\text{H}\beta}/M_\odot$	7.43 ± 0.07
2MASS K_{ext}	11.99 ± 0.09	$\log M_{[\text{O III}]} / M_\odot$	7.62 ± 0.05



Emission Line Measurements

Line	$\log L$ (erg s ⁻¹)	FWHM (km s ⁻¹)	σ (km s ⁻¹)	EW (Å)
H γ Narrow	39.33 ± 0.38	293 ± 63	156 ± 25	0.75 ± 0.44
Hγ Broad	40.17 ± 0.18	1802 ± 191	633 ± 41	4.65 ± 1.03
[O III] 4364	39.54 ± 0.23	285 ± 63	120 ± 25	1.24 ± 0.39
He II Narrow	39.73 ± 0.13	285 ± 63	120 ± 25	2.16 ± 0.39
He II Broad	40.68 ± 0.10	8672 ± 74	3683 ± 30	19.50 ± 2.17
H β Narrow	40.15 ± 0.06	293 ± 63	156 ± 25	6.15 ± 0.46
Hβ Broad	41.06 ± 0.04	3246 ± 187	2056 ± 156	50.57 ± 2.38
[O III] 5007	41.16 ± 0.01	293 ± 63	156 ± 25	66.94 ± 0.50
He I Narrow	39.01 ± 0.35	285 ± 63	120 ± 25	0.63 ± 0.35
He I Broad	40.30 ± 0.08	3330 ± 100	1414 ± 41	12.40 ± 1.17
[O I] 6300	39.62 ± 0.09	285 ± 63	120 ± 25	2.88 ± 0.38
H α Narrow	40.61 ± 0.02	285 ± 63	120 ± 25	30.66 ± 0.55
Hα Broad	41.66 ± 0.01	2850 ± 66	1545 ± 61	343.52 ± 3.10
[N II] 6585	40.55 ± 0.02	285 ± 63	120 ± 25	26.56 ± 0.56
[S II] 6718	40.15 ± 0.03	285 ± 63	120 ± 25	11.06 ± 0.44
[S II] 6732	40.05 ± 0.04	285 ± 63	120 ± 25	8.77 ± 0.45

Emission Summary

H α broad SNR	12.52
H β broad SNR	3.42
H γ broad SNR	1.21
AGN frac	0.45
Host frac	0.55
$\log L_{5100, \text{Host}}$	43.12
Fe II/H β	0.21
Fe II/[O III]	0.17

Quality Flags

spurious_hab/hbb	0/0
15100	1
balmer	0
balmer_snr	1
hb_width	1
balmer_width	0