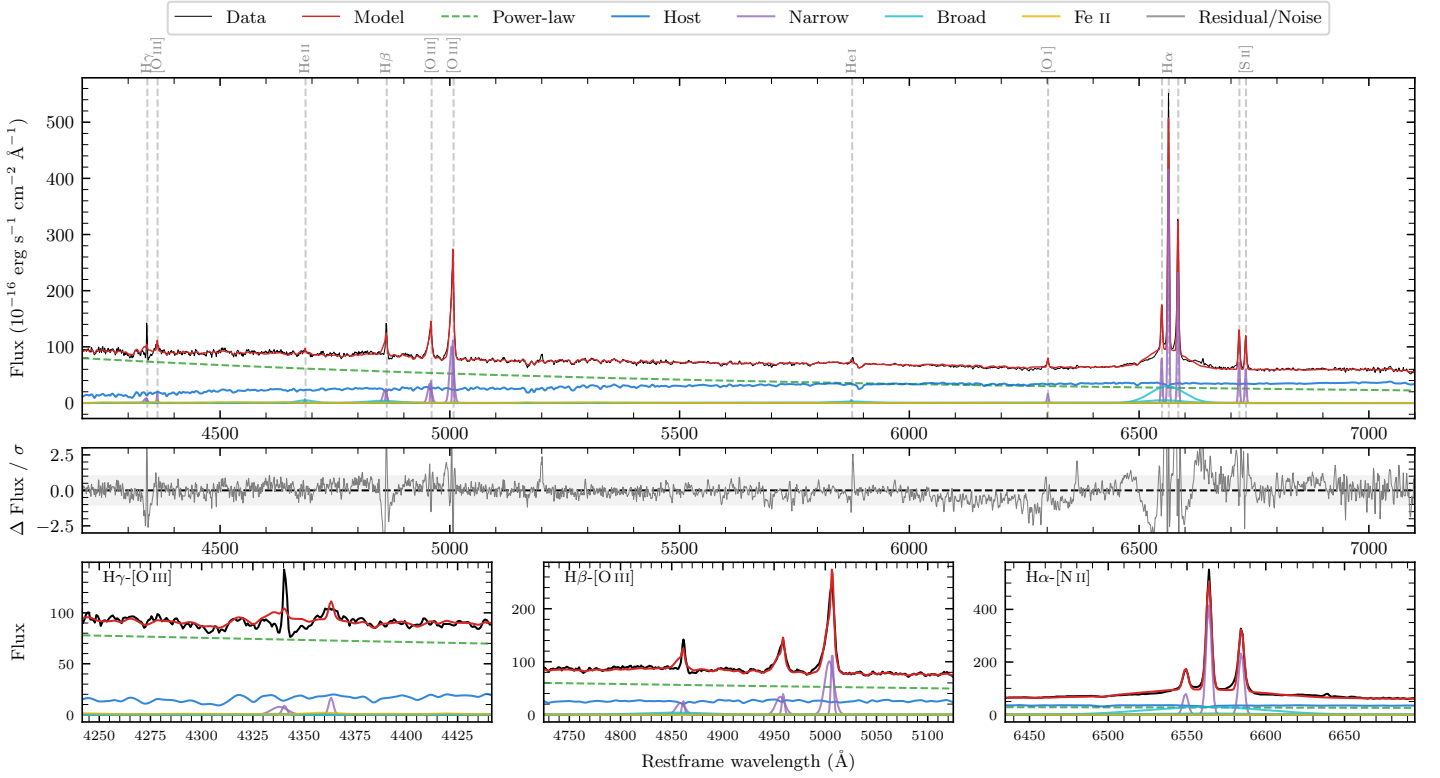
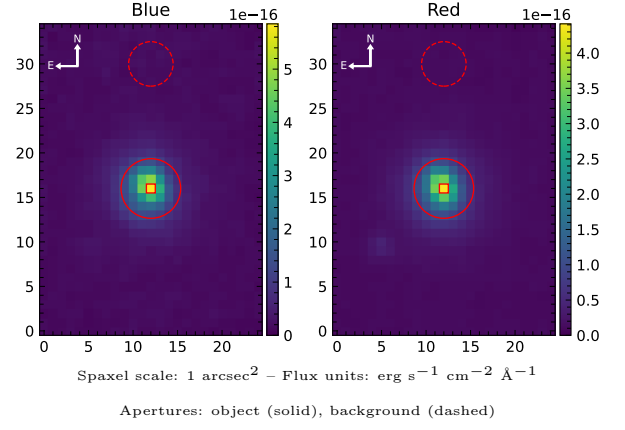


Mrk 609

Spectrum ID	21529338_sp1	Spectrum type	Sy 1.5
Alt name	g0325254-060838	Quality flag	good
z	0.0343	AGN reference	6dFGS
RA, Dec	51.3557, -6.1439	MW $E(B - V)$	0.048
MJD	60258.54	Power law α_ν	0.42 ± 0.07
SNR/ \AA B/R	16.3/24.1	$\log L_{5100, \text{AGN}}$	43.85 ± 0.02
Obs airmass	1.17	$\log H\beta_{\text{Br}}/[\text{O III}]$	-0.46 ± 0.08
SMSS ID	21529338	$\log M_{L5100}/M_\odot$	8.21 ± 0.08
Neighbour	None $< 15''$	$\log M_{\text{H}\alpha}/M_\odot$	7.71 ± 0.12
SMSS $\langle r_6 \rangle_{\text{ap}}$	14.44 ± 0.05	$\log M_{\text{H}\beta}/M_\odot$	7.83 ± 0.10
2MASS K_{ext}	10.74 ± 0.03	$\log M_{[\text{O III}]} / M_\odot$	8.19 ± 0.08



Emission Line Measurements

Line	$\log L$ (erg s^{-1})	FWHM (km s^{-1})	σ (km s^{-1})	EW (\AA)
H γ Narrow	40.44 ± 0.15	367 ± 89	246 ± 37	1.41 ± 0.27
Hγ Broad	—	—	—	—
[O III] 4364	40.14 ± 0.16	190 ± 63	79 ± 25	0.68 ± 0.15
He II Narrow	39.79 ± 0.29	190 ± 63	79 ± 25	0.36 ± 0.14
He II Broad	40.78 ± 0.13	2706 ± 202	1149 ± 85	3.72 ± 0.56
H β Narrow	40.95 ± 0.04	367 ± 89	246 ± 37	5.97 ± 0.24
Hβ Broad	41.17 ± 0.08	4845 ± 470	1762 ± 176	8.77 ± 0.75
[O III] 5007	41.63 ± 0.02	367 ± 89	246 ± 37	30.08 ± 0.33
He I Narrow	39.79 ± 0.18	190 ± 63	79 ± 25	0.62 ± 0.15
He I Broad	40.92 ± 0.12	4461 ± 644	1894 ± 273	7.54 ± 0.75
[O I] 6300	40.30 ± 0.07	190 ± 63	79 ± 25	2.40 ± 0.18
H α Narrow	41.72 ± 0.01	190 ± 63	79 ± 25	68.60 ± 0.33
Hα Broad	41.99 ± 0.05	4052 ± 501	1500 ± 184	124.86 ± 1.06
[N II] 6585	41.47 ± 0.02	190 ± 63	79 ± 25	39.25 ± 0.30
[S II] 6718	40.97 ± 0.02	190 ± 63	79 ± 25	13.10 ± 0.25
[S II] 6732	40.88 ± 0.02	190 ± 63	79 ± 25	10.77 ± 0.23

Emission Summary

H α broad SNR	7.01
H β broad SNR	1.16
H γ broad SNR	0.32
AGN frac	0.67
Host frac	0.33
$\log L_{5100, \text{Host}}$	43.54
Fe II/H β	0.77
Fe II/[O III]	0.24

Quality Flags

spurious_hab/hbb	0/0
15100	2
balmer	1
balmer_snr	2
hb_width	0
balmer_width	0