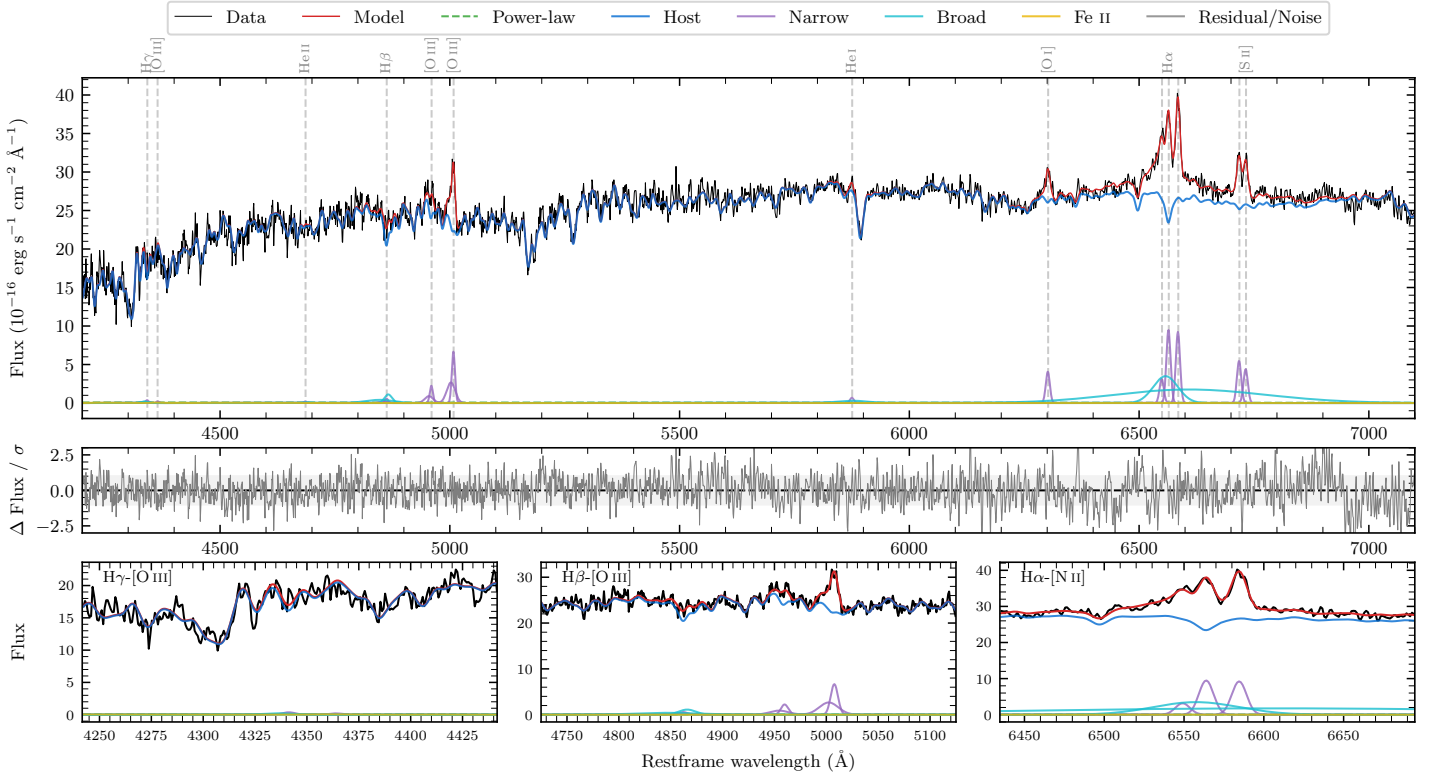
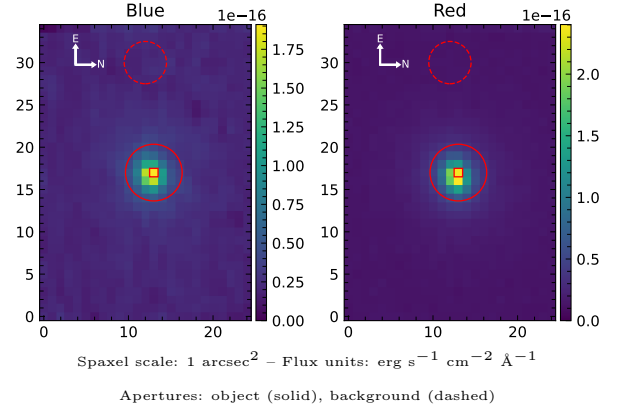


ICRF J040106.6–160639

Spectrum ID	21205439_sp1	Spectrum type	Sy 1.5
Alt name	g0401066–160639	Quality flag	good
z	0.0315	AGN reference	6dFGS
RA, Dec	60.2776, –16.1109	MW $E(B - V)$	0.028
MJD	60963.73	Power law α_ν	-0.56 ± 0.30
SNR/Å B/R	20.7/43.7	$\log L_{5100, \text{AGN}}$	40.82 ± 0.55
Obs airmass	1.07	$\log H\beta_{\text{Br}}/[\text{O III}]$	-0.34 ± 0.15
SMSS ID	21205439	$\log M_{L5100}/M_\odot$	5.86 ± 0.29
Neighbour	None $< 15''$	$\log M_{\text{H}\alpha}/M_\odot$	7.30 ± 0.04
SMSS $\langle r_6'' \text{ap} \rangle$	15.21 ± 0.02	$\log M_{\text{H}\beta}/M_\odot$	6.31 ± 0.18
2MASS K_{ext}	10.73 ± 0.09	$\log M_{[\text{O III}]} / M_\odot$	6.57 ± 0.16



Emission Line Measurements

Line	$\log L$ (erg s $^{-1}$)	FWHM (km s $^{-1}$)	σ (km s $^{-1}$)	EW (Å)
H γ Narrow	–	–	–	–
Hγ Broad	–	–	–	–
[O III] 4364	–	–	–	–
He II Narrow	–	–	–	–
He II Broad	–	–	–	–
H β Narrow	39.38 ± 0.34	610 ± 71	449 ± 31	172.82 ± 77.92
Hβ Broad	40.12 ± 0.14	1454 ± 242	1119 ± 142	924.00 ± 151.90
[O III] 5007	40.45 ± 0.03	610 ± 71	449 ± 31	2126.83 ± 86.21
He I Narrow	39.22 ± 0.22	494 ± 62	210 ± 25	157.41 ± 42.67
He I Broad	39.78 ± 0.19	4020 ± 62	1707 ± 25	571.13 ± 132.78
[O I] 6300	40.03 ± 0.04	494 ± 62	210 ± 25	1109.40 ± 50.59
H α Narrow	40.41 ± 0.02	494 ± 62	210 ± 25	2856.29 ± 57.18
Hα Broad	41.36 ± 0.02	3938 ± 138	5088 ± 59	25332.11 ± 291.65
[N II] 6585	40.40 ± 0.02	494 ± 62	210 ± 25	2801.43 ± 56.33
[S II] 6718	40.18 ± 0.03	494 ± 62	210 ± 25	1743.26 ± 61.64
[S II] 6732	40.09 ± 0.03	494 ± 62	210 ± 25	1409.65 ± 60.94

Emission Summary

H α broad SNR	4.49
H β broad SNR	1.27
H γ broad SNR	0.43
AGN frac	0.00
Host frac	1.00
$\log L_{5100, \text{Host}}$	43.44
Fe II/H β	–
Fe II/[O III]	–

Quality Flags

spurious_hab/hbb	0/0
15100	2
balmer	1
balmer_snr	2
hb_width	2
balmer_width	2