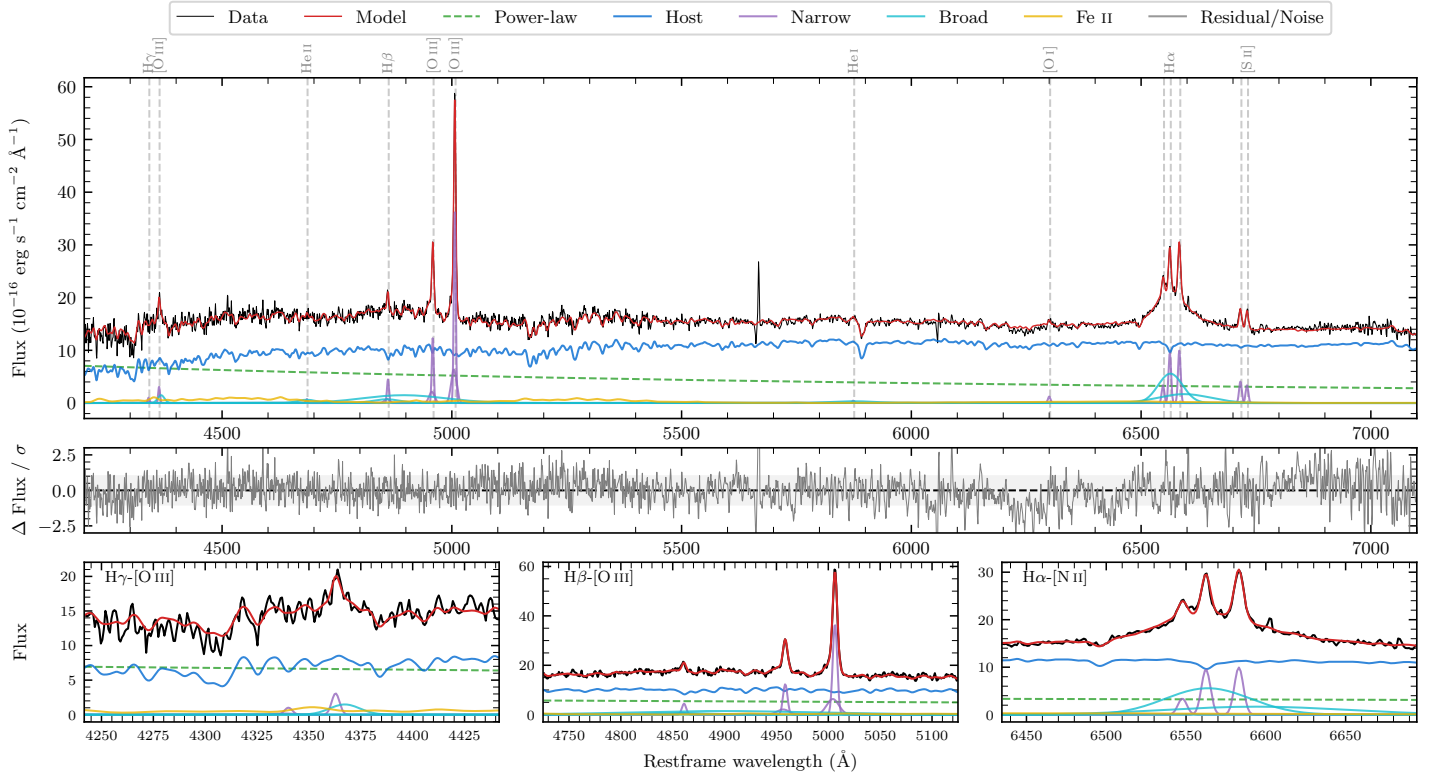
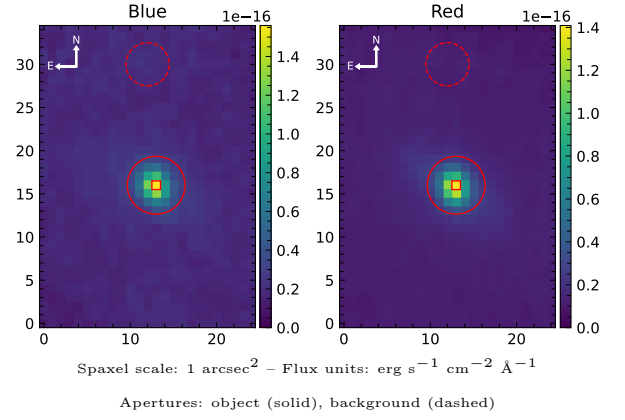


LEDA 931574

Spectrum ID	21116118_sp1	Spectrum type	Sy 1.8+
Alt name	g0333078-135433	Quality flag	good
z	0.0400	AGN reference	6dFGS
RA, Dec	53.2824, -13.9092	MW $E(B - V)$	0.039
MJD	60258.54	Power law α_ν	-0.24 ± 0.19
SNR/ \AA B/R	18.4/34.0	$\log L_{5100, \text{AGN}}$	42.99 ± 0.03
Obs airmass	1.11	$\log H\beta_{\text{Br}}/[\text{O III}]$	< -0.68
SMSS ID	21116118	$\log M_{L5100}/M_\odot$	—
Neighbour	None $< 15''$	$\log M_{\text{H}\alpha}/M_\odot$	7.17 ± 0.03
SMSS $\langle r_6'' \text{ap} \rangle$	16.01 ± 0.07	$\log M_{\text{H}\beta}/M_\odot$	—
2MASS K_{ext}	11.84 ± 0.07	$\log M_{[\text{O III}]} / M_\odot$	—



Emission Line Measurements

Line	$\log L$ (erg s^{-1})	FWHM (km s^{-1})	σ (km s^{-1})	EW (\AA)
H γ Narrow	39.44 ± 0.27	338 ± 63	233 ± 26	1.09 ± 0.58
Hγ Broad	—	—	—	—
[O III] 4364	39.76 ± 0.13	303 ± 63	129 ± 25	2.28 ± 0.37
He II Narrow	39.19 ± 0.31	303 ± 63	129 ± 25	0.70 ± 0.33
He II Broad	—	—	—	—
H β Narrow	40.13 ± 0.05	338 ± 63	233 ± 26	6.55 ± 0.55
Hβ Broad	< 40.38	—	—	—
[O III] 5007	41.06 ± 0.01	338 ± 63	233 ± 26	58.53 ± 0.61
He I Narrow	39.06 ± 0.26	303 ± 63	129 ± 25	0.76 ± 0.28
He I Broad	40.21 ± 0.10	5857 ± 83	2487 ± 34	10.94 ± 1.37
[O I] 6300	39.52 ± 0.10	303 ± 63	129 ± 25	2.51 ± 0.34
H α Narrow	40.43 ± 0.02	303 ± 63	129 ± 25	21.74 ± 0.43
Hα Broad	41.38 ± 0.01	3305 ± 82	1464 ± 33	198.11 ± 1.64
[N II] 6585	40.44 ± 0.02	303 ± 63	129 ± 25	22.86 ± 0.42
[S II] 6718	40.07 ± 0.03	303 ± 63	129 ± 25	9.90 ± 0.37
[S II] 6732	39.99 ± 0.03	303 ± 63	129 ± 25	8.29 ± 0.37

Emission Summary

H α broad SNR	8.18
H β broad SNR	0.82
H γ broad SNR	0.00
AGN frac	0.35
Host frac	0.65
$\log L_{5100, \text{Host}}$	43.26
Fe II/H β	—
Fe II/[O III]	—

Quality Flags

spurious_hab/hbb	0/2
15100	1
balmer	2
balmer_snr	2
hb_width	2
balmer_width	2