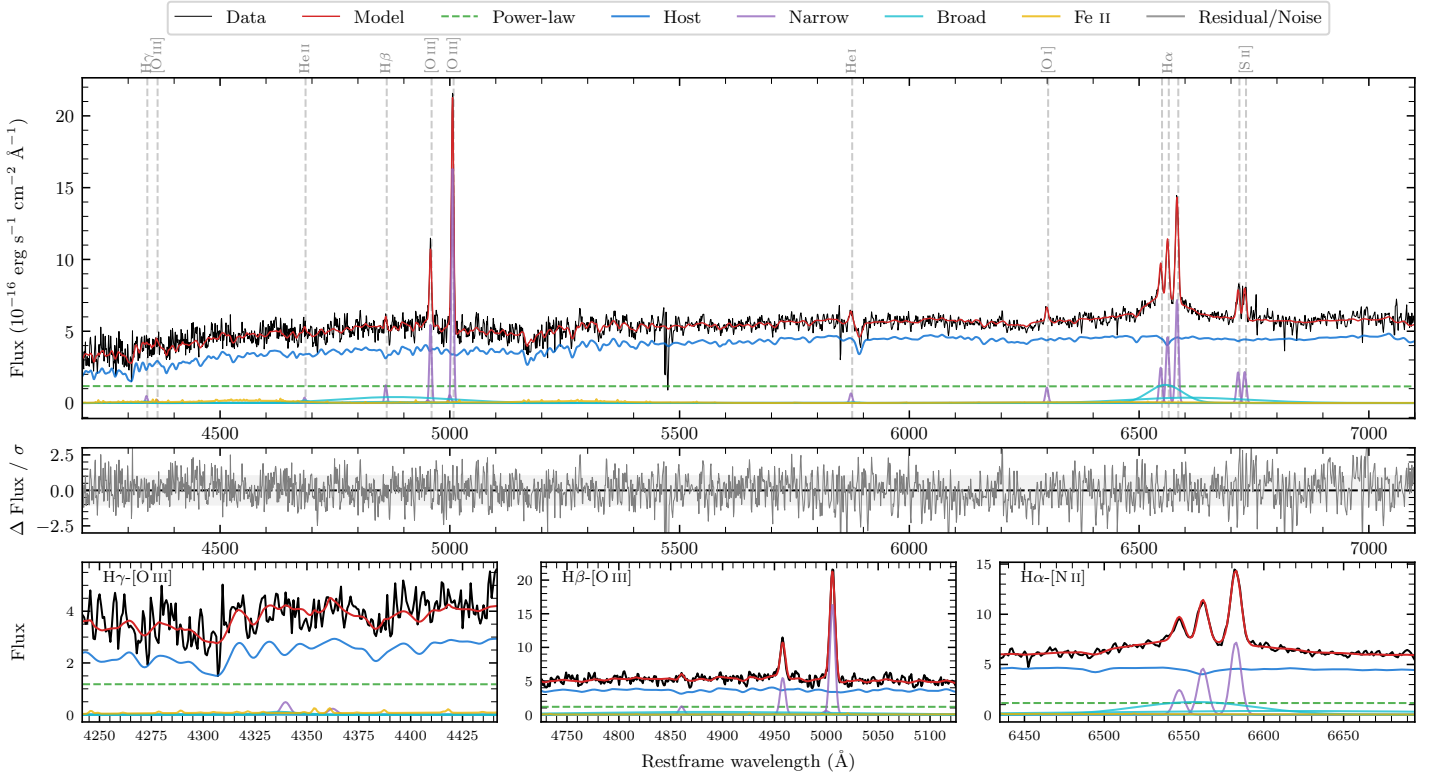
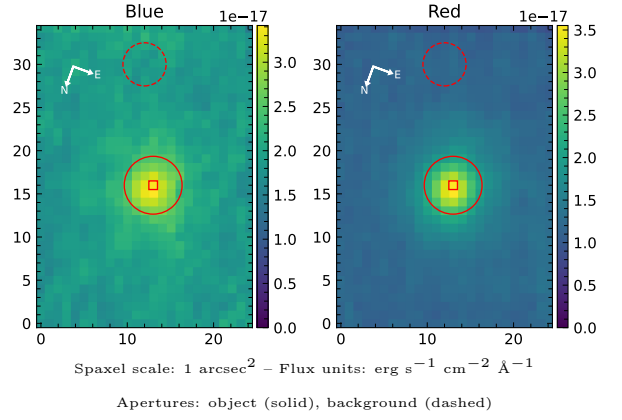


LEDA 955931

Spectrum ID	20687612_sp1	Spectrum type	Sy 1.5+
Alt name	g0303156-121330	Quality flag	good
z	0.0768	AGN reference	6dFGS
RA, Dec	45.8149, -12.2249	MW $E(B-V)$	0.060
MJD	60224.71	Power law α_ν	-1.97 ± 0.03
SNR/ \AA B/R	10.0/20.5	$\log L_{5100, \text{AGN}}$	42.94 ± 0.07
Obs airmass	1.09	$\log H\beta_{\text{Br}}/[\text{O III}]$	< -0.34
SMSS ID	20687612	$\log M_{L5100}/M_\odot$	—
Neighbour	None $< 15''$	$\log M_{\text{H}\alpha}/M_\odot$	7.59 ± 0.03
SMSS $\langle r_6'' \text{ap} \rangle$	16.59 ± 0.15	$\log M_{\text{H}\beta}/M_\odot$	—
2MASS K_{ext}	12.10 ± 0.08	$\log M_{[\text{O III}]} / M_\odot$	—



Emission Line Measurements

Line	$\log L$ (erg s^{-1})	FWHM (km s^{-1})	σ (km s^{-1})	EW (\AA)
H γ Narrow	39.64 ± 0.36	357 ± 63	166 ± 26	2.52 ± 1.31
Hγ Broad	—	—	—	—
[O III] 4364	39.30 ± 0.46	354 ± 62	149 ± 25	1.15 ± 1.11
He II Narrow	39.54 ± 0.36	354 ± 62	149 ± 25	2.01 ± 1.00
He II Broad	—	—	—	—
H β Narrow	40.09 ± 0.12	357 ± 63	166 ± 26	7.18 ± 1.16
Hβ Broad	< 40.89	—	—	—
[O III] 5007	41.23 ± 0.01	357 ± 63	166 ± 26	97.67 ± 1.30
He I Narrow	39.89 ± 0.13	354 ± 62	149 ± 25	4.58 ± 0.70
He I Broad	—	—	—	—
[O I] 6300	40.13 ± 0.06	354 ± 62	149 ± 25	7.91 ± 0.66
H α Narrow	40.77 ± 0.02	354 ± 62	149 ± 25	34.95 ± 0.77
Hα Broad	41.58 ± 0.02	4695 ± 141	3032 ± 102	220.49 ± 5.11
[N II] 6585	40.97 ± 0.01	354 ± 62	149 ± 25	55.04 ± 0.77
[S II] 6718	40.45 ± 0.04	354 ± 62	149 ± 25	16.74 ± 1.01
[S II] 6732	40.46 ± 0.04	354 ± 62	149 ± 25	16.87 ± 1.03

Emission Summary

H α broad SNR	3.34
H β broad SNR	0.16
H γ broad SNR	0.00
AGN frac	0.25
Host frac	0.75
$\log L_{5100, \text{Host}}$	43.43
Fe II/H β	—
Fe II/[O III]	—

Quality Flags

spurious_hab/hbb	0/2
15100	1
balmer	2
balmer_snr	2
hb_width	2
balmer_width	2