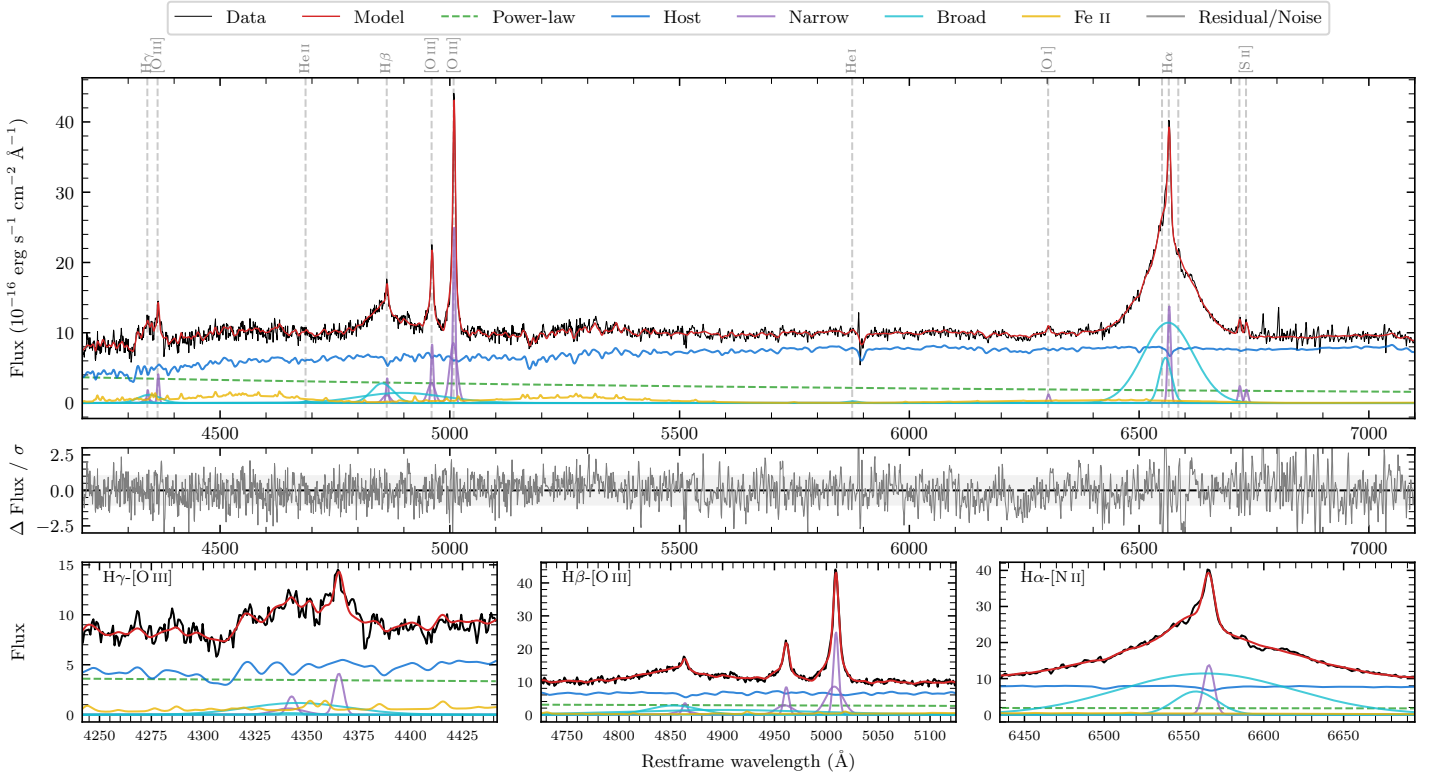
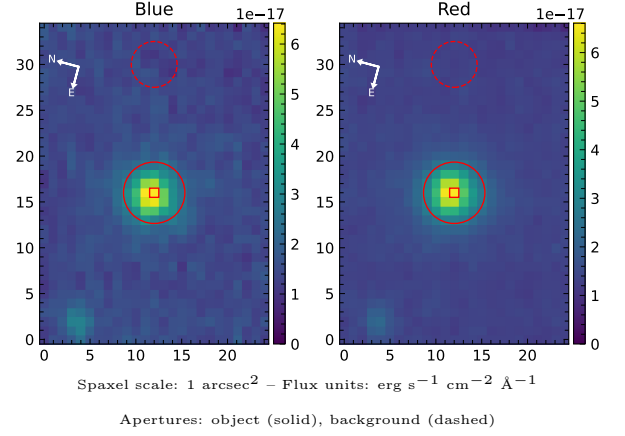


ESO 467-41

| | | | |
|--|--------------------|--|------------------|
| Spectrum ID | 2061541_sp1 | Spectrum type | Sy 1.5 |
| Alt name | g2218212-300448 | Quality flag | good |
| z | 0.0696 | AGN reference | 6dFGS |
| RA, Dec | 334.5881, -30.0798 | MW $E(B - V)$ | 0.015 |
| MJD | 60115.8 | Power law α_ν | -0.41 ± 0.32 |
| SNR/ \AA B/R | 16.3/26.0 | $\log L_{5100, \text{AGN}}$ | 43.21 ± 0.05 |
| Obs airmass | 1.02 | $\log H\beta_{\text{Br}}/[\text{O III}]$ | 0.18 ± 0.02 |
| SMSS ID | 2061541 | $\log M_{L5100}/M_\odot$ | 7.91 ± 0.04 |
| Neighbour | None $< 15''$ | $\log M_{\text{H}\alpha}/M_\odot$ | 7.84 ± 0.03 |
| SMSS $\langle r_6''_{\text{ap}} \rangle$ | 16.06 ± 0.05 | $\log M_{\text{H}\beta}/M_\odot$ | 8.09 ± 0.04 |
| 2MASS K_{ext} | 12.09 ± 0.09 | $\log M_{[\text{O III}]} / M_\odot$ | 8.16 ± 0.03 |



Emission Line Measurements

| Line | $\log L$ (erg s ⁻¹) | FWHM (km s ⁻¹) | σ (km s ⁻¹) | EW (Å) |
|-----------------------------------|------------------------------------|----------------------------------|---------------------------------|--------------------------------------|
| H γ Narrow | 40.43 ± 0.10 | 439 ± 63 | 376 ± 26 | 6.61 ± 0.85 |
| Hγ Broad | 40.99 ± 0.07 | 3615 ± 317 | 1417 ± 48 | 23.31 ± 1.60 |
| [O III] 4364 | 40.46 ± 0.05 | 361 ± 63 | 153 ± 25 | 7.14 ± 0.50 |
| He II Narrow | 39.38 ± 0.42 | 361 ± 63 | 153 ± 25 | 0.66 ± 0.46 |
| He II Broad | 39.84 ± 0.33 | 1178 ± 62 | 500 ± 25 | 1.90 ± 0.86 |
| H β Narrow | 40.77 ± 0.04 | 439 ± 63 | 376 ± 26 | 17.02 ± 0.95 |
| Hβ Broad | 41.81 ± 0.02 | 4704 ± 180 | 3689 ± 68 | 188.27 ± 3.66 |
| [O III] 5007 | 41.63 ± 0.01 | 439 ± 63 | 376 ± 26 | 130.05 ± 1.08 |
| He I Narrow | 39.28 ± 0.41 | 361 ± 63 | 153 ± 25 | 0.75 ± 0.51 |
| He I Broad | 40.04 ± 0.21 | 1708 ± 69 | 725 ± 28 | 4.34 ± 1.21 |
| [O I] 6300 | 40.10 ± 0.07 | 361 ± 63 | 153 ± 25 | 5.52 ± 0.53 |
| H α Narrow | 41.16 ± 0.01 | 361 ± 63 | 153 ± 25 | 68.56 ± 0.83 |
| Hα Broad | 42.35 ± 0.01 | 3638 ± 102 | 1969 ± 25 | 1059.22 ± 3.12 |
| [N II] 6585 | 39.24 ± 0.42 | 361 ± 63 | 153 ± 25 | 0.81 ± 0.68 |
| [S II] 6718 | 40.42 ± 0.04 | 361 ± 63 | 153 ± 25 | 12.78 ± 0.72 |
| [S II] 6732 | 40.32 ± 0.05 | 361 ± 63 | 153 ± 25 | 10.22 ± 0.73 |

Emission Summary

| | |
|------------------------------|-------|
| H α broad SNR | 28.49 |
| H β broad SNR | 6.57 |
| H γ broad SNR | 2.23 |
| AGN frac | 0.29 |
| Host frac | 0.71 |
| $\log L_{5100, \text{Host}}$ | 43.59 |
| Fe II/H β | 0.63 |
| Fe II/[O III] | 0.94 |

Quality Flags

| | |
|------------------|-----|
| spurious_hab/hbb | 0/0 |
| 15100 | 1 |
| balmer | 0 |
| balmer_snr | 1 |
| hb_width | 2 |
| balmer_width | 0 |