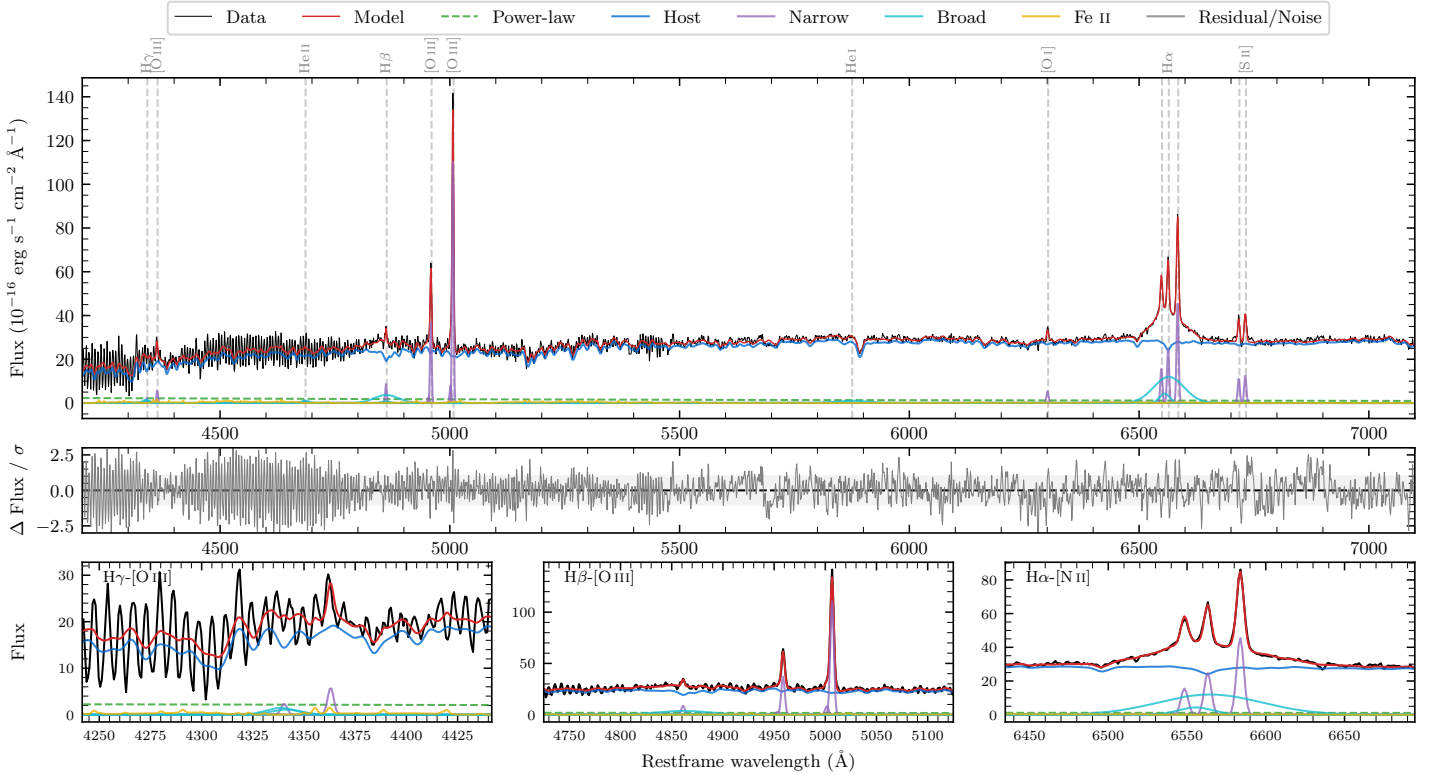
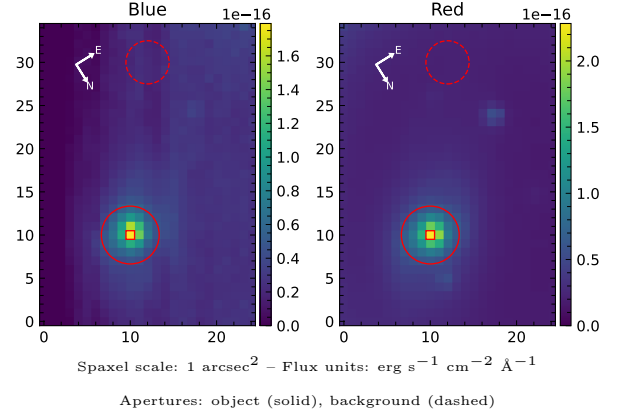


# LEDA 147955

Spectrum ID	20050703_sp1	Spectrum type	Bad
Alt name	g0546563-333742	Quality flag	bad_all
$z$	0.0346	AGN reference	6dFGS
RA, Dec	86.7346, -33.6282	MW $E(B-V)$	0.039
MJD	59995.5	Power law $\alpha_\nu$	$-0.39 \pm 0.60$
SNR/ $\text{\AA}$ B/R	10.9/25.9	$\log L_{5100, \text{AGN}}$	$42.38 \pm 0.27$
Obs airmass	1.13	$\log H\beta_{\text{Br}}/[\text{O III}]$	$-0.29 \pm 0.05$
SMSS ID	20050703	$\log M_{L5100}/M_\odot$	$7.22 \pm 0.18$
Neighbour	None $< 15''$	$\log M_{\text{H}\alpha}/M_\odot$	$7.10 \pm 0.04$
SMSS $\langle r_6''_{\text{ap}} \rangle$	$15.56 \pm 0.05$	$\log M_{\text{H}\beta}/M_\odot$	$7.34 \pm 0.14$
2MASS $K_{\text{ext}}$	$11.11 \pm 0.06$	$\log M_{[\text{O III}]} / M_\odot$	$7.61 \pm 0.13$



## Emission Line Measurements

Line	$\log L$ ( $\text{erg s}^{-1}$ )	FWHM ( $\text{km s}^{-1}$ )	$\sigma$ ( $\text{km s}^{-1}$ )	EW ( $\text{\AA}$ )
H $\gamma$ Narrow	$39.44 \pm 0.39$	$249 \pm 62$	$130 \pm 25$	$4.53 \pm 3.36$
<b>H<math>\gamma</math> Broad</b>	<b><math>40.22 \pm 0.18</math></b>	<b><math>1202 \pm 63</math></b>	<b><math>461 \pm 25</math></b>	<b><math>22.44 \pm 6.40</math></b>
[O III] 4364	$39.80 \pm 0.18$	$246 \pm 62$	$103 \pm 25$	$10.59 \pm 2.78$
He II Narrow	$39.14 \pm 0.45$	$246 \pm 62$	$103 \pm 25$	$2.59 \pm 2.38$
<b>He II Broad</b>	<b><math>39.82 \pm 0.31</math></b>	<b><math>1178 \pm 62</math></b>	<b><math>500 \pm 25</math></b>	<b><math>12.43 \pm 5.29</math></b>
H $\beta$ Narrow	$40.06 \pm 0.10$	$249 \pm 62$	$130 \pm 25$	$22.65 \pm 2.75$
<b>H<math>\beta</math> Broad</b>	<b><math>40.88 \pm 0.05</math></b>	<b><math>3201 \pm 480</math></b>	<b><math>1327 \pm 43</math></b>	<b><math>148.54 \pm 9.94</math></b>
[O III] 5007	$41.18 \pm 0.01$	$249 \pm 62$	$130 \pm 25$	$310.68 \pm 3.13$
He I Narrow	$38.88 \pm 0.46$	$246 \pm 62$	$103 \pm 25$	$2.06 \pm 1.84$
<b>He I Broad</b>	<b><math>40.42 \pm 0.09</math></b>	<b><math>4036 \pm 63</math></b>	<b><math>1714 \pm 25</math></b>	<b><math>70.45 \pm 7.74</math></b>
[O I] 6300	$39.93 \pm 0.07$	$246 \pm 62$	$103 \pm 25$	$25.79 \pm 2.25$
H $\alpha$ Narrow	$40.61 \pm 0.02$	$246 \pm 62$	$103 \pm 25$	$131.35 \pm 2.47$
<b>H<math>\alpha</math> Broad</b>	<b><math>41.51 \pm 0.01</math></b>	<b><math>2810 \pm 120</math></b>	<b><math>1206 \pm 25</math></b>	<b><math>1033.21 \pm 9.47</math></b>
[N II] 6585	$40.88 \pm 0.01$	$246 \pm 62$	$103 \pm 25$	$243.89 \pm 2.56$
[S II] 6718	$40.28 \pm 0.03$	$246 \pm 62$	$103 \pm 25$	$63.08 \pm 2.62$
[S II] 6732	$40.34 \pm 0.03$	$246 \pm 62$	$103 \pm 25$	$72.69 \pm 2.45$

## Emission Summary

H $\alpha$ broad SNR	6.88
H $\beta$ broad SNR	2.03
H $\gamma$ broad SNR	1.33
AGN frac	0.07
Host frac	0.93
$\log L_{5100, \text{Host}}$	43.51
Fe II/H $\beta$	0.62
Fe II/[O III]	0.31

## Quality Flags

spurious_hab/hbb	0/0
15100	2
balmer	1
balmer_snr	1
hb_width	0
balmer_width	0