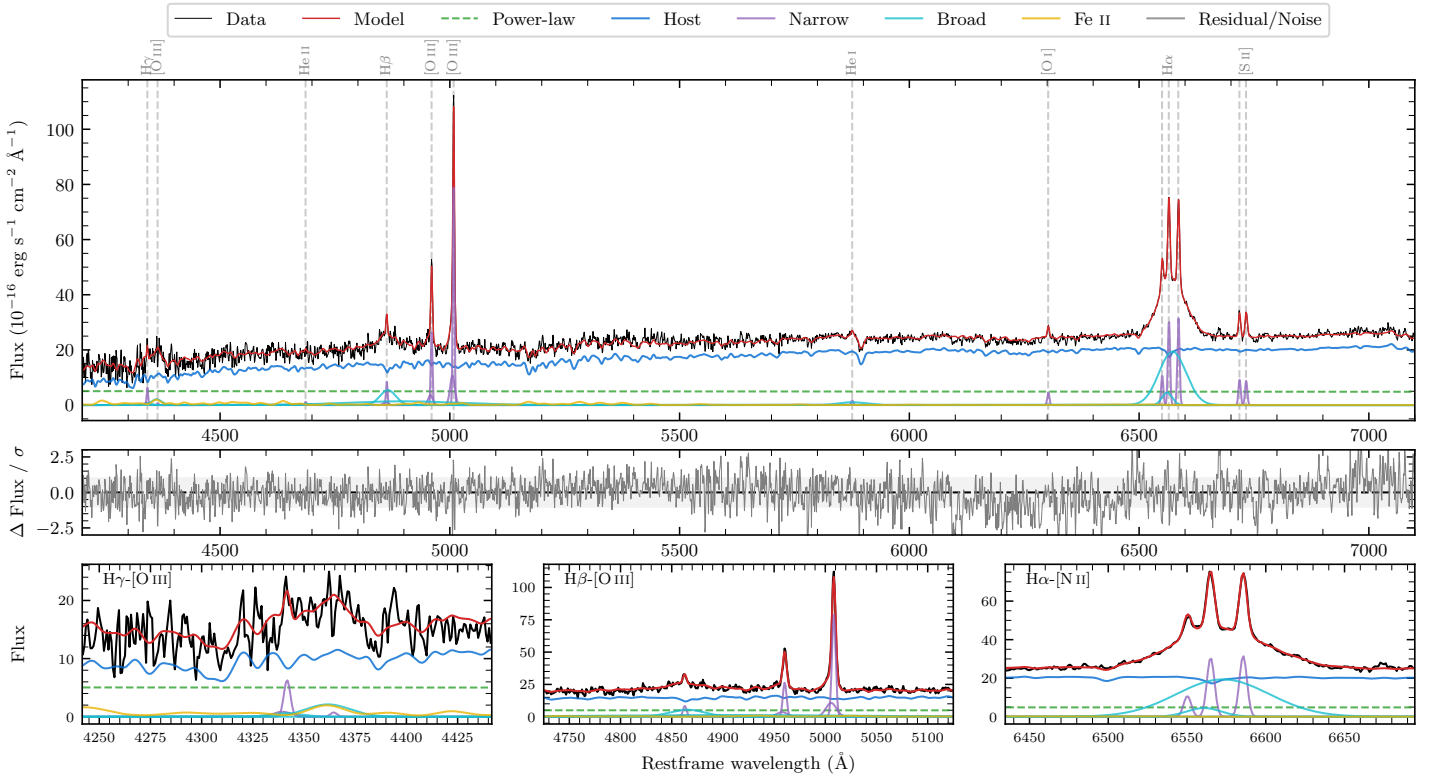
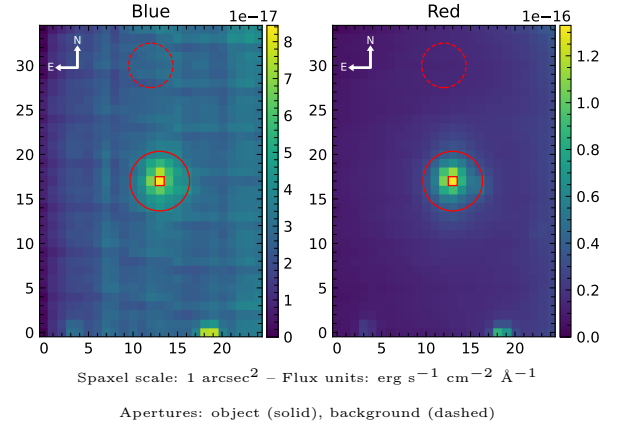


UGC 10683

Spectrum ID	200341385_sp1	Spectrum type	Sy 1.5
Alt name	g1705004-013229	Quality flag	good
z	0.0302	AGN reference	6dFGS
RA, Dec	256.2516, -1.5413	MW $E(B - V)$	0.287
MJD	60020.77	Power law α_ν	-1.91 ± 0.12
SNR/ \AA B/R	10.2/31.0	$\log L_{5100, \text{AGN}}$	42.73 ± 0.08
Obs airmass	1.20	$\log H\beta_{\text{Br}}/[\text{O III}]$	-0.33 ± 0.25
SMSS ID	200341385	$\log M_{L5100}/M_\odot$	7.14 ± 0.04
Neighbour	None $< 15''$	$\log M_{\text{H}\alpha}/M_\odot$	7.12 ± 0.03
SMSS $\langle r_6''_{\text{ap}} \rangle$	15.85 ± 0.09	$\log M_{\text{H}\beta}/M_\odot$	7.04 ± 0.13
2MASS K_{ext}	10.24 ± 0.04	$\log M_{[\text{O III}]} / M_\odot$	7.32 ± 0.03



Emission Line Measurements

Line	$\log L$ (erg s ⁻¹)	FWHM (km s ⁻¹)	σ (km s ⁻¹)	EW (Å)
H γ Narrow	39.87 ± 0.14	279 ± 63	199 ± 26	7.09 ± 1.70
Hγ Broad	40.20 ± 0.15	2062 ± 392	674 ± 57	14.31 ± 2.73
[O III] 4364	–	–	–	–
He II Narrow	39.03 ± 0.43	260 ± 62	109 ± 25	1.03 ± 0.80
He II Broad	–	–	–	–
H β Narrow	40.04 ± 0.08	279 ± 63	199 ± 26	10.63 ± 1.25
Hβ Broad	$40.70^{+0.45}_{-0.05}$	2478 ± 29	919 ± 25	48.32 ± 2.43
[O III] 5007	41.03 ± 0.01	279 ± 63	199 ± 26	103.27 ± 1.31
He I Narrow	39.30 ± 0.15	260 ± 62	109 ± 25	1.96 ± 0.37
He I Broad	40.21 ± 0.07	3460 ± 63	1469 ± 25	15.74 ± 1.39
[O I] 6300	39.76 ± 0.05	260 ± 62	109 ± 25	5.62 ± 0.39
H α Narrow	40.60 ± 0.01	260 ± 62	109 ± 25	39.09 ± 0.44
Hα Broad	41.52 ± 0.01	2843 ± 74	1109 ± 25	330.12 ± 1.48
[N II] 6585	40.61 ± 0.01	260 ± 62	109 ± 25	40.32 ± 0.43
[S II] 6718	40.09 ± 0.03	260 ± 62	109 ± 25	12.07 ± 0.42
[S II] 6732	40.07 ± 0.03	260 ± 62	109 ± 25	11.53 ± 0.42

Emission Summary

H α broad SNR	11.92
H β broad SNR	2.83
H γ broad SNR	1.19
AGN frac	0.25
Host frac	0.75
$\log L_{5100, \text{Host}}$	43.19
Fe II/H β	–
Fe II/[O III]	–

Quality Flags

spurious_hab/hbb	0/1
15100	1
balmer	1
balmer_snr	1
hb_width	0
balmer_width	2