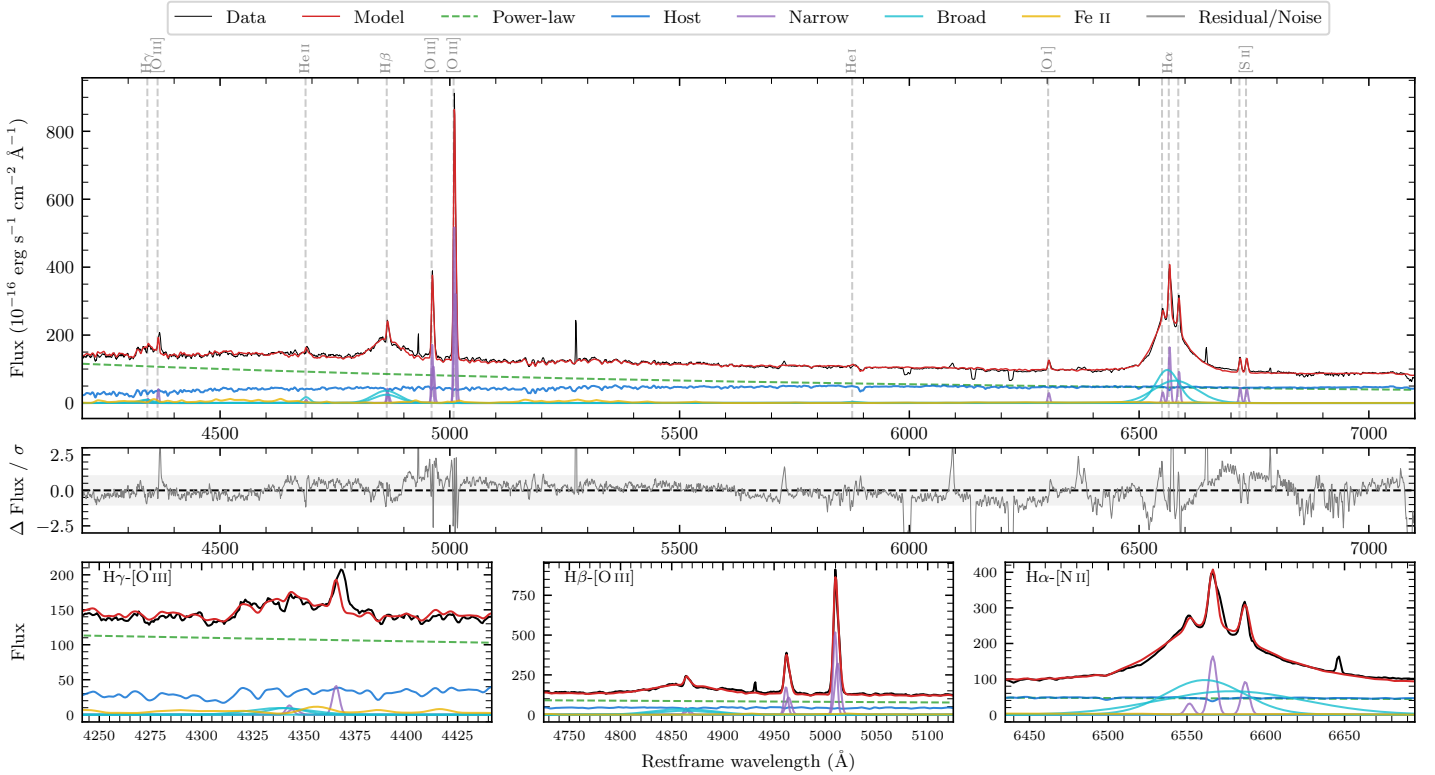
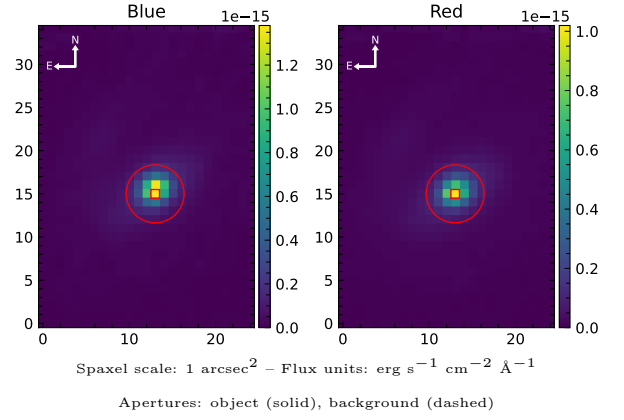


ESO 362–18

Spectrum ID	19807012_sp1	Spectrum type	Sy 1.5
Alt name	ESO362–G18	Quality flag	good
z	0.0127	AGN reference	S7
RA, Dec	79.8992, –32.6575	MW $E(B - V)$	0.015
MJD	60650.5	Power law α_ν	0.07 ± 0.11
SNR/Å B/R	14.0/20.1	$\log L_{5100, \text{AGN}}$	43.13 ± 0.02
Obs airmass	1.15	$\log H\beta_{\text{Br}}/[\text{O III}]$	-0.02 ± 0.06
SMSS ID	19807012	$\log M_{L5100}/M_\odot$	7.75 ± 0.06
Neighbour	10.3", 2041562347	$\log M_{\text{H}\alpha}/M_\odot$	7.37 ± 0.07
SMSS $\langle r_6 \rangle_{\text{ap}}$	13.88 ± 0.11	$\log M_{\text{H}\beta}/M_\odot$	7.69 ± 0.08
2MASS K_{ext}	10.03 ± 0.03	$\log M_{[\text{O III}]} / M_\odot$	7.83 ± 0.06



Emission Line Measurements

Line	$\log L$ (erg s^{-1})	FWHM (km s^{-1})	σ (km s^{-1})	EW (\AA)
H γ Narrow	39.58 ± 0.24	349 ± 63	159 ± 25	0.99 ± 0.28
Hγ Broad	40.26 ± 0.18	1899 ± 548	758 ± 146	5.37 ± 0.71
[O III] 4364	39.78 ± 0.14	271 ± 63	113 ± 25	1.63 ± 0.25
He II Narrow	39.20 ± 0.35	271 ± 63	113 ± 25	0.51 ± 0.22
He II Broad	40.17 ± 0.16	1282 ± 187	544 ± 79	4.03 ± 0.49
H β Narrow	40.12 ± 0.07	349 ± 63	159 ± 25	4.41 ± 0.31
Hβ Broad	41.19 ± 0.06	4065 ± 282	1520 ± 279	50.79 ± 0.94
[O III] 5007	41.21 ± 0.01	349 ± 63	159 ± 25	58.99 ± 0.40
He I Narrow	38.83 ± 0.38	271 ± 63	113 ± 25	0.34 ± 0.24
He I Broad	39.67 ± 0.21	1692 ± 241	718 ± 102	2.22 ± 0.59
[O I] 6300	39.79 ± 0.05	271 ± 63	113 ± 25	3.58 ± 0.27
H α Narrow	40.55 ± 0.04	271 ± 63	113 ± 25	22.59 ± 0.41
Hα Broad	41.68 ± 0.01	3393 ± 268	1437 ± 102	303.40 ± 1.27
[N II] 6585	40.30 ± 0.03	271 ± 63	113 ± 25	12.91 ± 0.38
[S II] 6718	40.00 ± 0.04	271 ± 63	113 ± 25	6.62 ± 0.26
[S II] 6732	39.97 ± 0.03	271 ± 63	113 ± 25	6.22 ± 0.27

Emission Summary

H α broad SNR	16.62
H β broad SNR	6.19
H γ broad SNR	1.68
AGN frac	0.66
Host frac	0.34
$\log L_{5100, \text{Host}}$	42.84
Fe II/H β	0.52
Fe II/[O III]	0.47

Quality Flags

spurious_hab/hbb	0/0
15100	0
balmer	0
balmer_snr	1
hb_width	0
balmer_width	0