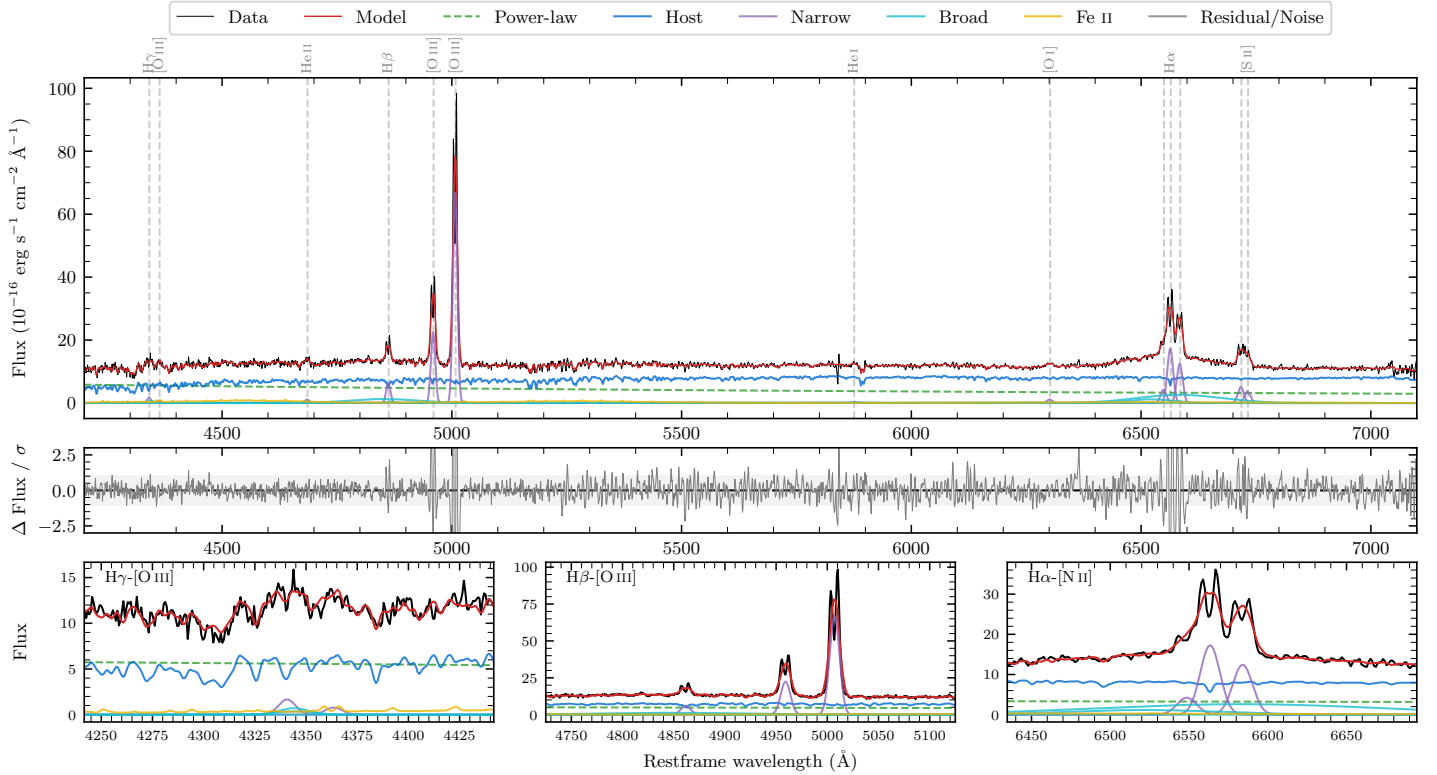
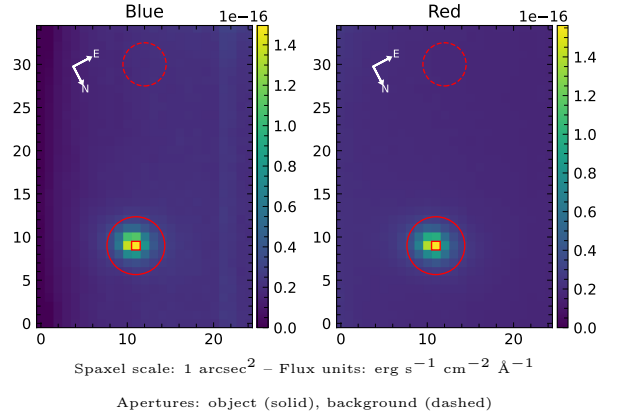


LEDA 668116

Spectrum ID	19795813_sp1	Spectrum type	Sy 1.8
Alt name	g0529592-340159	Quality flag	good
z	0.0788	AGN reference	6dFGS
RA, Dec	82.4967, -34.0329	MW $E(B - V)$	0.016
MJD	59668.38	Power law α_ν	-0.70 ± 0.20
SNR/ \AA B/R	8.6/15.3	$\log L_{5100, \text{AGN}}$	43.55 ± 0.04
Obs airmass	1.11	$\log H\beta_{\text{Br}}/[\text{O III}]$	-0.50 ± 0.07
SMSS ID	19795813	$\log M_{L5100}/M_\odot$	8.51 ± 0.24
Neighbour	5.1", 2041549029	$\log M_{\text{H}\alpha}/M_\odot$	8.50 ± 0.02
SMSS $\langle r_6''_{\text{ap}} \rangle$	16.05 ± 0.09	$\log M_{\text{H}\beta}/M_\odot$	8.46 ± 0.24
2MASS K_{ext}	12.52 ± 0.17	$\log M_{[\text{O III}]} / M_\odot$	8.86 ± 0.24



Emission Line Measurements

Line	$\log L$ (erg s^{-1})	FWHM (km s^{-1})	σ (km s^{-1})	EW (\AA)
H γ Narrow	40.46 ± 0.31	674 ± 62	286 ± 25	3.35 ± 1.03
Hγ Broad	40.68 ± 0.27	1267 ± 100	467 ± 41	4.17 ± 1.46
[O III] 4364	40.13 ± 0.37	673 ± 62	285 ± 25	1.59 ± 0.99
He II Narrow	40.32 ± 0.31	673 ± 62	285 ± 25	2.70 ± 0.98
He II Broad	40.21 ± 0.46	1216 ± 62	516 ± 25	2.10 ± 1.29
H β Narrow	41.07 ± 0.07	674 ± 62	286 ± 25	15.94 ± 1.09
Hβ Broad	41.63 ± 0.06	7945 ± 2225	3752 ± 78	55.82 ± 4.33
[O III] 5007	42.13 ± 0.01	674 ± 62	286 ± 25	187.21 ± 1.33
He I Narrow	39.89 ± 0.38	673 ± 62	285 ± 25	1.34 ± 0.70
He I Broad	40.09 ± 0.41	1938 ± 62	823 ± 25	2.14 ± 1.37
[O I] 6300	40.45 ± 0.11	673 ± 62	285 ± 25	5.34 ± 0.81
H α Narrow	41.65 ± 0.01	673 ± 62	285 ± 25	89.60 ± 1.06
Hα Broad	42.09 ± 0.02	9282 ± 231	3512 ± 34	247.75 ± 4.00
[N II] 6585	41.51 ± 0.01	673 ± 62	285 ± 25	64.89 ± 1.04
[S II] 6718	41.13 ± 0.04	673 ± 62	285 ± 25	27.96 ± 1.29
[S II] 6732	40.99 ± 0.04	673 ± 62	285 ± 25	20.18 ± 1.32

Emission Summary

H α broad SNR	2.50
H β broad SNR	1.32
H γ broad SNR	1.03
AGN frac	0.41
Host frac	0.59
$\log L_{5100, \text{Host}}$	43.71
Fe II/H β	0.85
Fe II/[O III]	0.26

Quality Flags

spurious_hab/hbb	0/0
15100	1
balmer	1
balmer_snr	2
hb_width	0
balmer_width	2