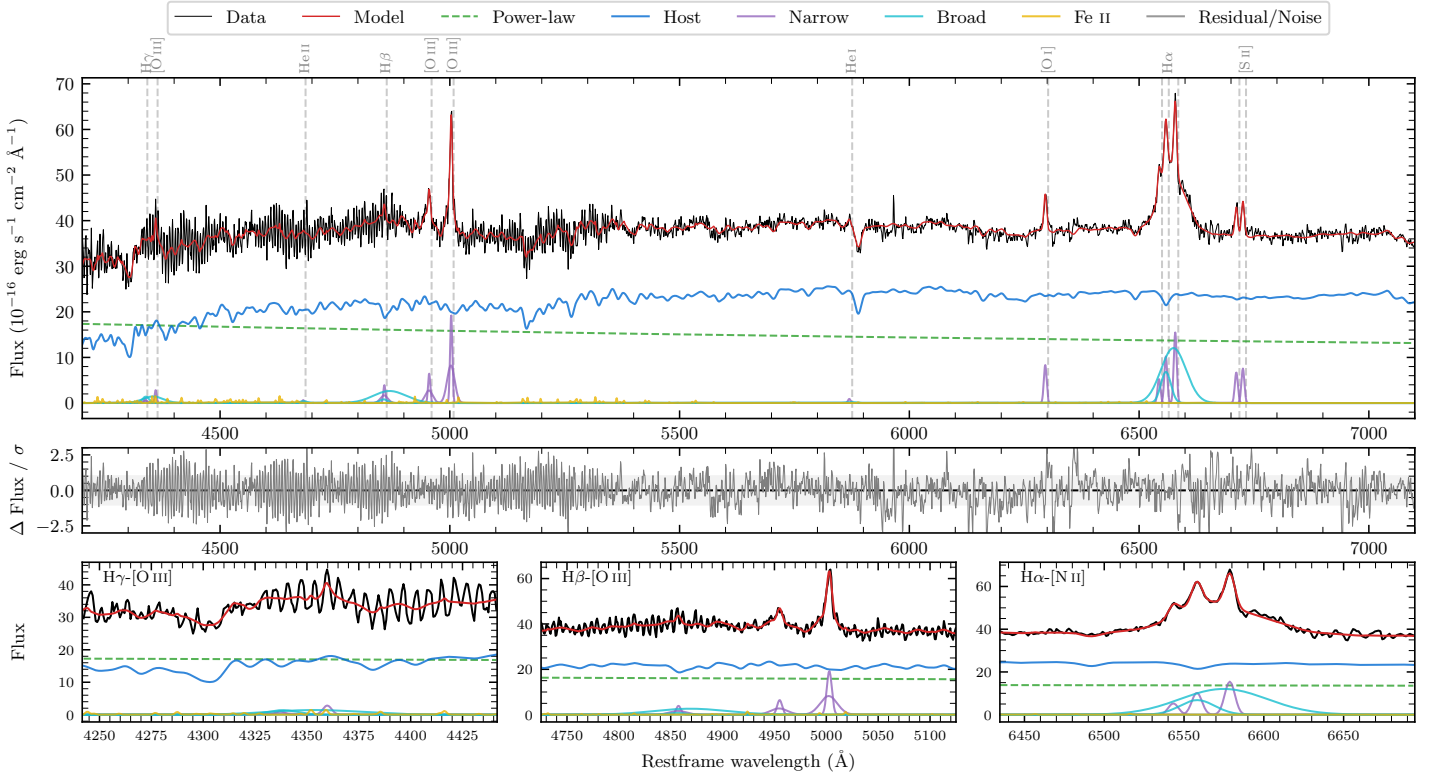
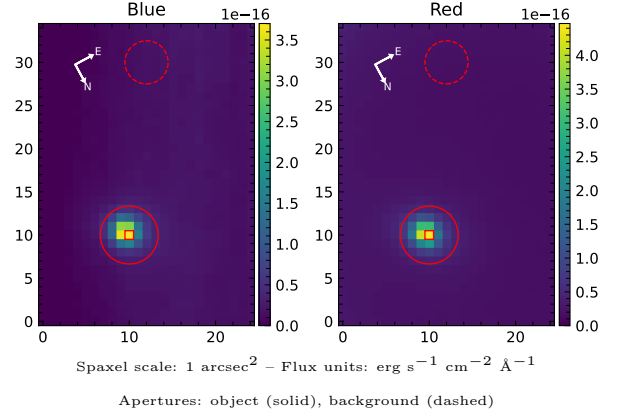


ESO 362–21

Spectrum ID	19687484_sp1	Spectrum type	Sy 1.5
Alt name	g0522580–362731	Quality flag	good
z	0.0554	AGN reference	6dFGS
RA, Dec	80.7416, –36.4586	MW $E(B - V)$	0.034
MJD	59995.49	Power law α_ν	-1.47 ± 0.15
SNR/ \AA B/R	18.6/38.3	$\log L_{5100, \text{AGN}}$	43.79 ± 0.03
Obs airmass	1.14	$\log H\beta_{\text{Br}}/[\text{O III}]$	-0.04 ± 0.06
SMSS ID	19687484	$\log M_{L5100}/M_\odot$	8.08 ± 0.15
Neighbour	12.1", 2041407217	$\log M_{\text{H}\alpha}/M_\odot$	7.24 ± 0.04
SMSS $\langle r_6^{\text{ap}} \rangle$	15.06 ± 0.21	$\log M_{\text{H}\beta}/M_\odot$	7.79 ± 0.16
2MASS K_{ext}	nan \pm nan	$\log M_{[\text{O III}]} / M_\odot$	7.96 ± 0.15



Emission Line Measurements

Line	$\log L$ (erg s^{-1})	FWHM (km s^{-1})	σ (km s^{-1})	EW (\AA)
H γ Narrow	40.04 ± 0.43	438 ± 65	389 ± 29	0.83 ± 0.61
Hγ Broad	40.95 ± 0.14	2512 ± 1003	1143 ± 74	6.50 ± 1.10
[O III] 4364	40.08 ± 0.28	343 ± 63	145 ± 25	0.93 ± 0.34
He II Narrow	–	–	–	–
He II Broad	39.83 ± 0.46	1178 ± 62	500 ± 25	0.53 ± 0.53
H β Narrow	40.66 ± 0.13	438 ± 65	390 ± 29	3.73 ± 0.55
Hβ Broad	41.32 ± 0.06	4298 ± 750	1804 ± 54	16.61 ± 1.16
[O III] 5007	41.36 ± 0.02	438 ± 65	390 ± 29	19.18 ± 0.56
He I Narrow	39.72 ± 0.30	343 ± 63	145 ± 25	0.47 ± 0.18
He I Broad	39.66 ± 0.46	1191 ± 63	505 ± 25	0.41 ± 0.33
[O I] 6300	40.71 ± 0.03	343 ± 63	145 ± 25	4.80 ± 0.19
H α Narrow	40.82 ± 0.04	343 ± 63	145 ± 25	6.30 ± 0.23
Hα Broad	41.91 ± 0.01	2482 ± 99	986 ± 25	78.11 ± 0.65
[N II] 6585	41.00 ± 0.02	343 ± 63	145 ± 25	9.53 ± 0.23
[S II] 6718	40.65 ± 0.03	343 ± 63	145 ± 25	4.29 ± 0.21
[S II] 6732	40.70 ± 0.03	343 ± 63	145 ± 25	4.82 ± 0.21

Emission Summary

H α broad SNR	8.95
H β broad SNR	1.79
H γ broad SNR	1.42
AGN frac	0.43
Host frac	0.57
$\log L_{5100, \text{Host}}$	43.91
Fe II/H β	0.28
Fe II/[O III]	0.24

Quality Flags

spurious_hab/hbb	0/0
15100	1
balmer	1
balmer_snr	2
hb_width	0
balmer_width	0