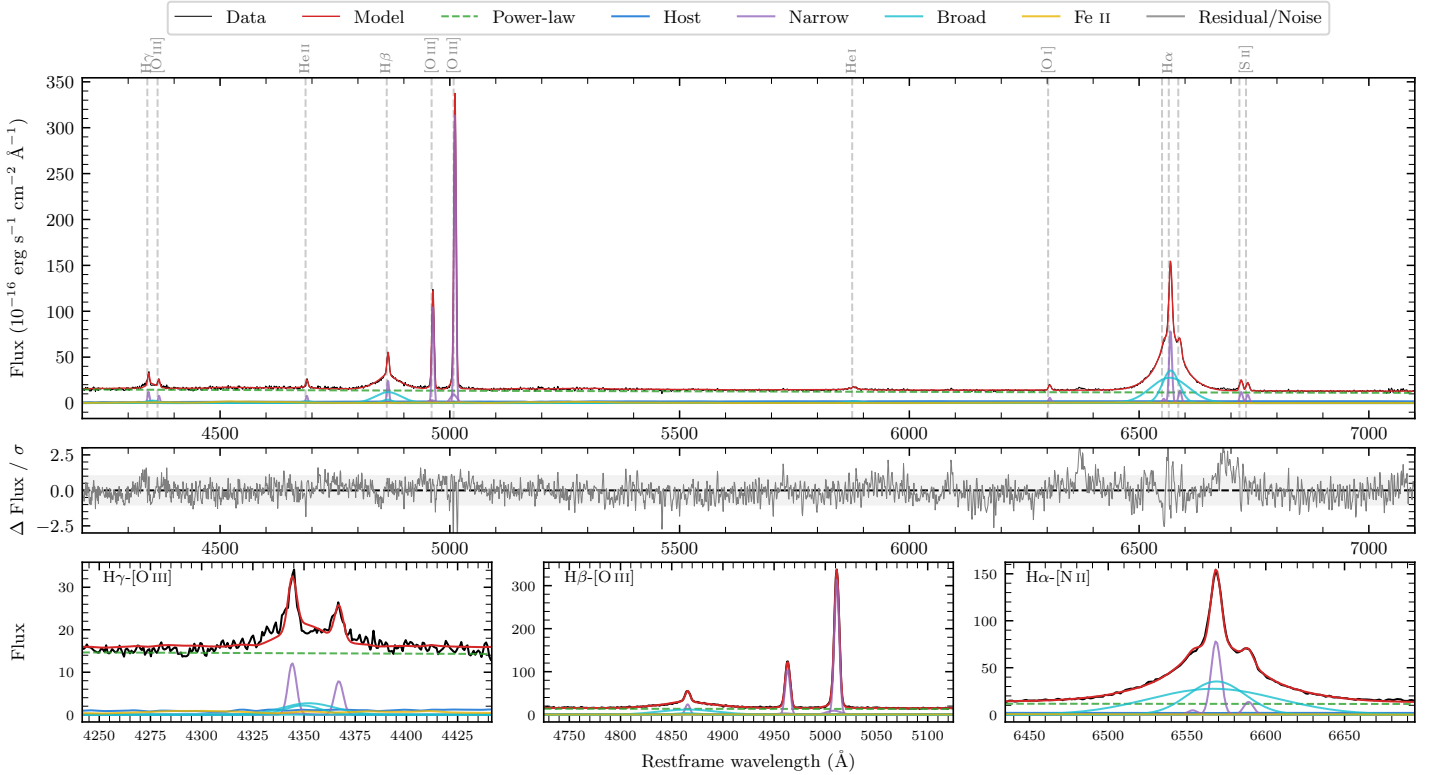
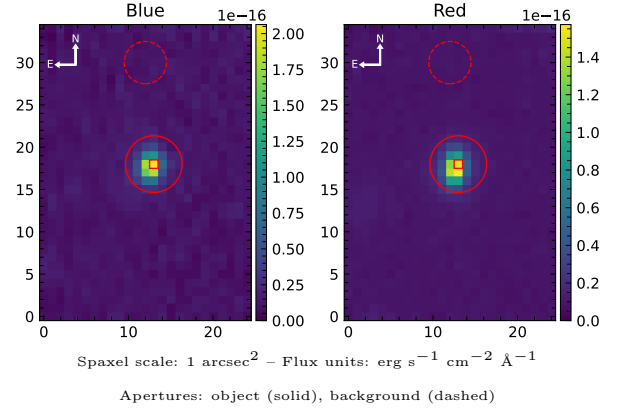


# LEDA 3095695

Spectrum ID	19557796_sp1	Spectrum type	Sy 1.5
Alt name	PGC 3095695	Quality flag	good
$z$	0.0800	AGN reference	<a href="#">PGC</a>
RA, Dec	70.3439, -27.1387	MW $E(B - V)$	0.031
MJD	60946.76	Power law $\alpha_\nu$	$-1.45 \pm 0.14$
SNR/ $\text{\AA}$ B/R	9.6/15.9	$\log L_{5100, \text{AGN}}$	$44.03 \pm 0.02$
Obs airmass	1.00	$\log H\beta_{\text{Br}}/[\text{O III}]$	$-0.34 \pm 0.06$
SMSS ID	<a href="#">19557796</a>	$\log M_{L5100}/M_\odot$	$7.85 \pm 0.15$
Neighbour	11.0", <a href="#">19557800</a>	$\log M_{\text{H}\alpha}/M_\odot$	$7.87 \pm 0.06$
SMSS $\langle r_6'' \text{ap} \rangle$	$15.52 \pm 0.04$	$\log M_{\text{H}\beta}/M_\odot$	$7.85 \pm 0.16$
2MASS $K_{\text{ext}}$	nan $\pm$ nan	$\log M_{[\text{O III}]} / M_\odot$	$8.20 \pm 0.16$



## Emission Line Measurements

Line	$\log L$ ( $\text{erg s}^{-1}$ )	FWHM ( $\text{km s}^{-1}$ )	$\sigma$ ( $\text{km s}^{-1}$ )	EW ( $\text{\AA}$ )
H $\gamma$ Narrow	$41.07 \pm 0.08$	$345 \pm 63$	$189 \pm 31$	$5.12 \pm 0.52$
<b>H<math>\gamma</math> Broad</b>	<b><math>41.41 \pm 0.14</math></b>	<b><math>2035 \pm 724</math></b>	<b><math>619 \pm 223</math></b>	<b><math>10.07 \pm 0.80</math></b>
[O III] 4364	$40.85 \pm 0.17$	$340 \pm 63$	$143 \pm 25$	$3.10 \pm 0.33$
He II Narrow	$40.88 \pm 0.09$	$340 \pm 63$	$143 \pm 25$	$3.42 \pm 0.31$
<b>He II Broad</b>	<b><math>41.14 \pm 0.19</math></b>	<b><math>2013 \pm 915</math></b>	<b><math>854 \pm 388</math></b>	<b><math>4.95 \pm 0.69</math></b>
H $\beta$ Narrow	$41.42 \pm 0.05$	$345 \pm 63$	$189 \pm 31$	$12.19 \pm 0.53$
<b>H<math>\beta</math> Broad</b>	<b><math>42.20 \pm 0.06</math></b>	<b><math>2920 \pm 464</math></b>	<b><math>1400 \pm 297</math></b>	<b><math>74.29 \pm 1.15</math></b>
[O III] 5007	$42.54 \pm 0.01$	$345 \pm 63$	$189 \pm 31$	$165.00 \pm 0.67$
He I Narrow	$40.30 \pm 0.21$	$340 \pm 63$	$143 \pm 25$	$1.03 \pm 0.20$
<b>He I Broad</b>	<b><math>41.22 \pm 0.14</math></b>	<b><math>2300 \pm 964</math></b>	<b><math>977 \pm 409</math></b>	<b><math>8.02 \pm 0.56</math></b>
[O I] 6300	$40.86 \pm 0.04$	$340 \pm 63$	$143 \pm 25$	$3.91 \pm 0.21$
H $\alpha$ Narrow	$42.02 \pm 0.02$	$340 \pm 63$	$143 \pm 25$	$57.90 \pm 0.42$
<b>H<math>\alpha</math> Broad</b>	<b><math>42.88 \pm 0.01</math></b>	<b><math>2600 \pm 149</math></b>	<b><math>1242 \pm 39</math></b>	<b><math>417.33 \pm 1.02</math></b>
[N II] 6585	$41.26 \pm 0.04$	$340 \pm 63$	$143 \pm 25$	$10.14 \pm 0.34$
[S II] 6718	$41.22 \pm 0.02$	$340 \pm 63$	$143 \pm 25$	$9.19 \pm 0.29$
[S II] 6732	$41.10 \pm 0.03$	$340 \pm 63$	$143 \pm 25$	$7.01 \pm 0.29$

## Emission Summary

H $\alpha$ broad SNR	37.82
H $\beta$ broad SNR	9.85
H $\gamma$ broad SNR	2.80
AGN frac	0.90
Host frac	0.10
$\log L_{5100, \text{Host}}$	43.07
Fe II/H $\beta$	0.37
Fe II/[O III]	0.17

## Quality Flags

spurious_hab/hbb	0/0
15100	0
balmer	0
balmer_snr	1
hb_width	0
balmer_width	0