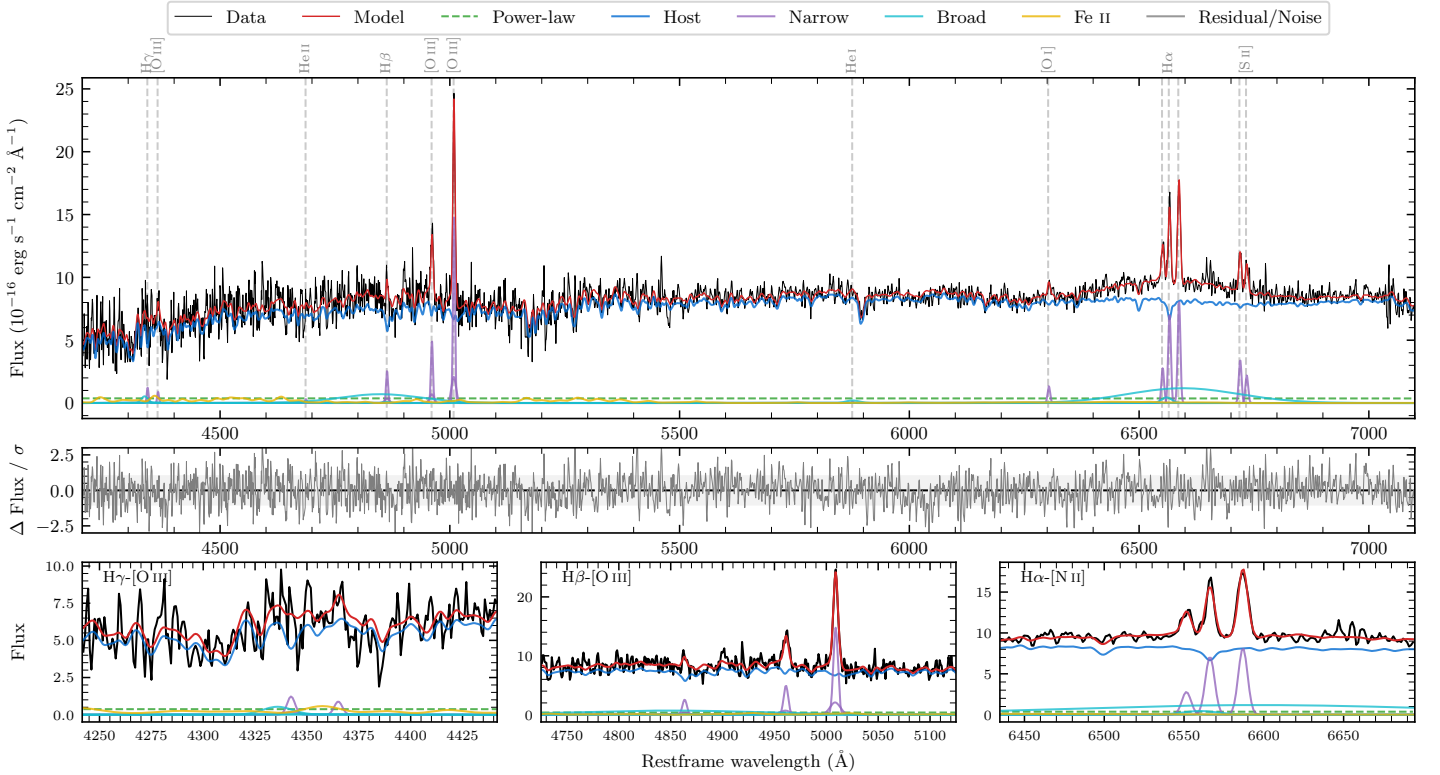
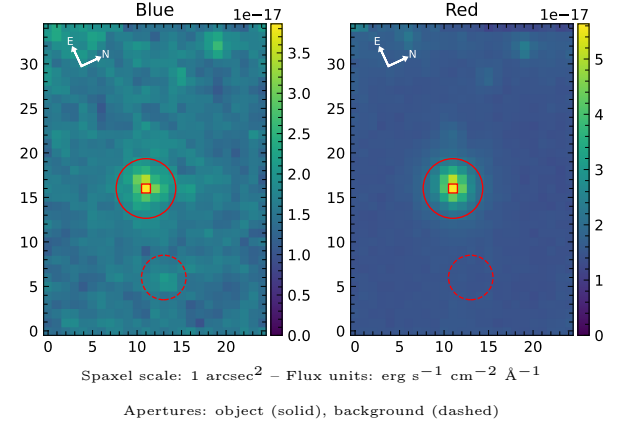


6dFGS gJ170056.7–030646

Spectrum ID	195000846_sp2	Spectrum type	Sy 1.5+
Alt name	g1700567–030646	Quality flag	good
z	0.0801	AGN reference	6dFGS
RA, Dec	255.2363, –3.1129	MW $E(B - V)$	0.284
MJD	61146.67	Power law α_ν	-1.96 ± 0.06
SNR/ \AA B/R	8.5/16.3	$\log L_{5100, \text{AGN}}$	42.48 ± 0.40
Obs airmass	1.21	$\log H\beta_{\text{Br}}/[\text{O III}]$	< -0.27
SMSS ID	195000846	$\log M_{L5100}/M_\odot$	–
Neighbour	None $< 15''$	$\log M_{\text{H}\alpha}/M_\odot$	8.37 ± 0.16
SMSS $\langle r_6''_{\text{ap}} \rangle$	17.13 ± 0.04	$\log M_{\text{H}\beta}/M_\odot$	–
2MASS K_{ext}	12.49 ± 0.08	$\log M_{[\text{O III}]} / M_\odot$	–



Emission Line Measurements

Line	$\log L$ (erg s^{-1})	FWHM (km s^{-1})	σ (km s^{-1})	EW (\AA)
H γ Narrow	40.12 ± 0.23	332 ± 63	185 ± 28	22.37 ± 11.08
Hγ Broad	–	–	–	–
[O III] 4364	39.86 ± 0.30	314 ± 62	131 ± 25	12.38 ± 6.47
He II Narrow	–	–	–	–
He II Broad	–	–	–	–
H β Narrow	40.49 ± 0.09	332 ± 63	185 ± 28	52.60 ± 8.21
Hβ Broad	< 40.99	–	–	–
[O III] 5007	41.26 ± 0.02	332 ± 63	185 ± 28	312.76 ± 9.17
He I Narrow	–	–	–	–
He I Broad	40.10 ± 0.32	1702 ± 62	723 ± 25	21.53 ± 9.81
[O I] 6300	40.20 ± 0.10	314 ± 62	131 ± 25	27.37 ± 3.63
H α Narrow	40.94 ± 0.02	314 ± 62	131 ± 25	151.75 ± 4.83
Hα Broad	41.80 ± 0.03	9857 ± 1778	4649 ± 42	1094.18 ± 29.96
[N II] 6585	41.00 ± 0.02	314 ± 62	131 ± 25	174.39 ± 4.85
[S II] 6718	40.64 ± 0.04	314 ± 62	131 ± 25	75.15 ± 5.88
[S II] 6732	40.45 ± 0.08	314 ± 62	131 ± 25	48.21 ± 5.69

Emission Summary

H α broad SNR	1.77
H β broad SNR	0.00
H γ broad SNR	0.00
AGN frac	0.05
Host frac	0.95
$\log L_{5100, \text{Host}}$	43.76
Fe II/H β	–
Fe II/[O III]	–

Quality Flags

spurious_hab/hbb	0/2
15100	2
balmer	2
balmer_snr	2
hb_width	2
balmer_width	2