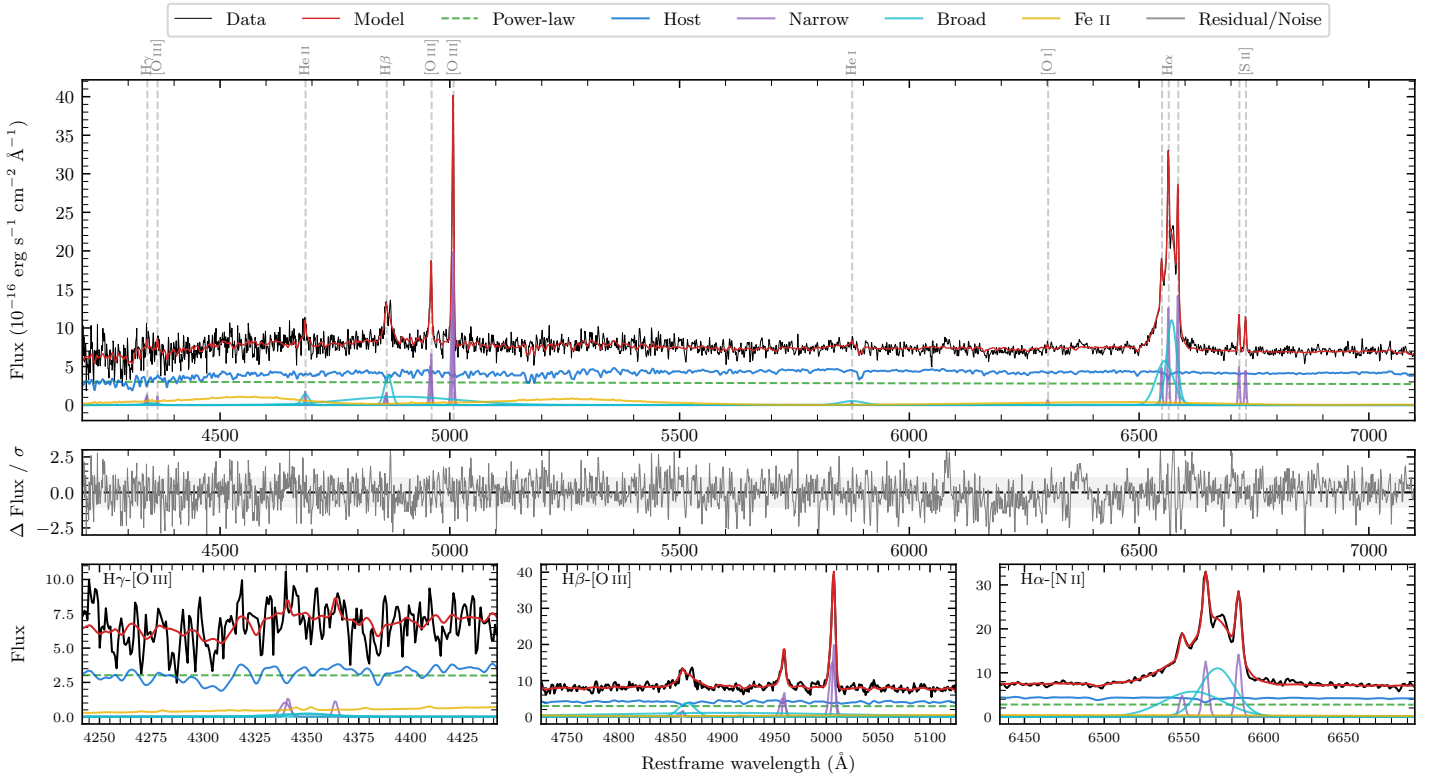
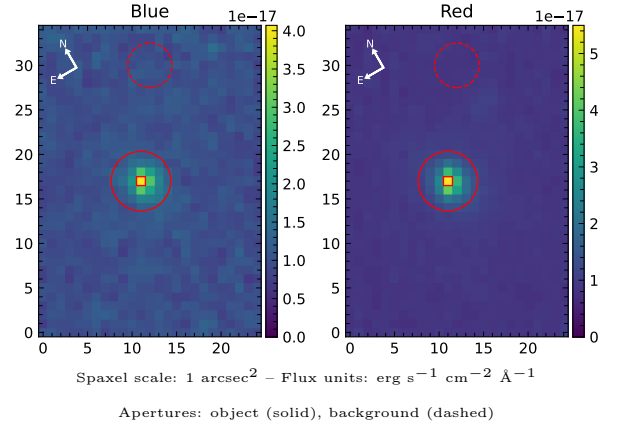


LEDA 3872332

Spectrum ID	194459658_sp1	Spectrum type	Sy 1.5
Alt name	g1646573-044829	Quality flag	good
z	0.0418	AGN reference	6dFGS
RA, Dec	251.7389, -4.8082	MW $E(B - V)$	0.316
MJD	60164.41	Power law α_ν	-1.79 ± 0.15
SNR/ \AA B/R	9.2/15.7	$\log L_{5100, \text{AGN}}$	42.79 ± 0.03
Obs airmass	1.12	$\log H\beta_{\text{Br}}/[\text{O III}]$	-0.32 ± 0.38
SMSS ID	194459658	$\log M_{L5100}/M_\odot$	6.53 ± 0.03
Neighbour	None $< 15''$	$\log M_{H\alpha}/M_\odot$	6.48 ± 0.05
SMSS $\langle r_6''_{\text{ap}} \rangle$	17.05 ± 0.09	$\log M_{H\beta}/M_\odot$	6.31 ± 0.20
2MASS K_{ext}	12.30 ± 0.11	$\log M_{[\text{O III}]} / M_\odot$	6.58 ± 0.04



Emission Line Measurements

Line	$\log L$ (erg s $^{-1}$)	FWHM (km s $^{-1}$)	σ (km s $^{-1}$)	EW (Å)
H γ Narrow	39.62 ± 0.17	258 ± 63	141 ± 25	3.38 ± 0.92
Hγ Broad	—	—	—	—
[O III] 4364	39.15 ± 0.31	182 ± 63	77 ± 25	1.14 ± 0.56
He II Narrow	39.36 ± 0.21	182 ± 63	77 ± 25	1.86 ± 0.48
He II Broad	—	—	—	—
H β Narrow	39.75 ± 0.12	258 ± 63	141 ± 25	4.68 ± 0.69
Hβ Broad	$40.52^{+0.72}_{-0.04}$	1179 ± 25	439 ± 25	27.42 ± 1.25
[O III] 5007	40.85 ± 0.01	258 ± 63	141 ± 25	58.52 ± 0.81
He I Narrow	38.90 ± 0.31	182 ± 63	77 ± 25	0.68 ± 0.30
He I Broad	40.17 ± 0.08	3160 ± 65	1342 ± 26	12.66 ± 1.31
[O I] 6300	39.07 ± 0.27	182 ± 63	77 ± 25	1.01 ± 0.34
H α Narrow	40.36 ± 0.02	182 ± 63	77 ± 25	19.97 ± 0.48
Hα Broad	41.39 ± 0.01	1487 ± 65	643 ± 25	215.88 ± 1.31
[N II] 6585	40.41 ± 0.01	182 ± 63	77 ± 25	22.61 ± 0.44
[S II] 6718	39.96 ± 0.03	182 ± 63	77 ± 25	8.10 ± 0.35
[S II] 6732	39.93 ± 0.03	182 ± 63	77 ± 25	7.41 ± 0.33

Emission Summary

H α broad SNR	18.06
H β broad SNR	4.50
H γ broad SNR	0.67
AGN frac	0.44
Host frac	0.56
$\log L_{5100, \text{Host}}$	42.90
Fe II/H β	—
Fe II/[O III]	—

Quality Flags

spurious_hab/hbb	0/2
15100	1
balmer	0
balmer_snr	2
hb_width	0
balmer_width	2