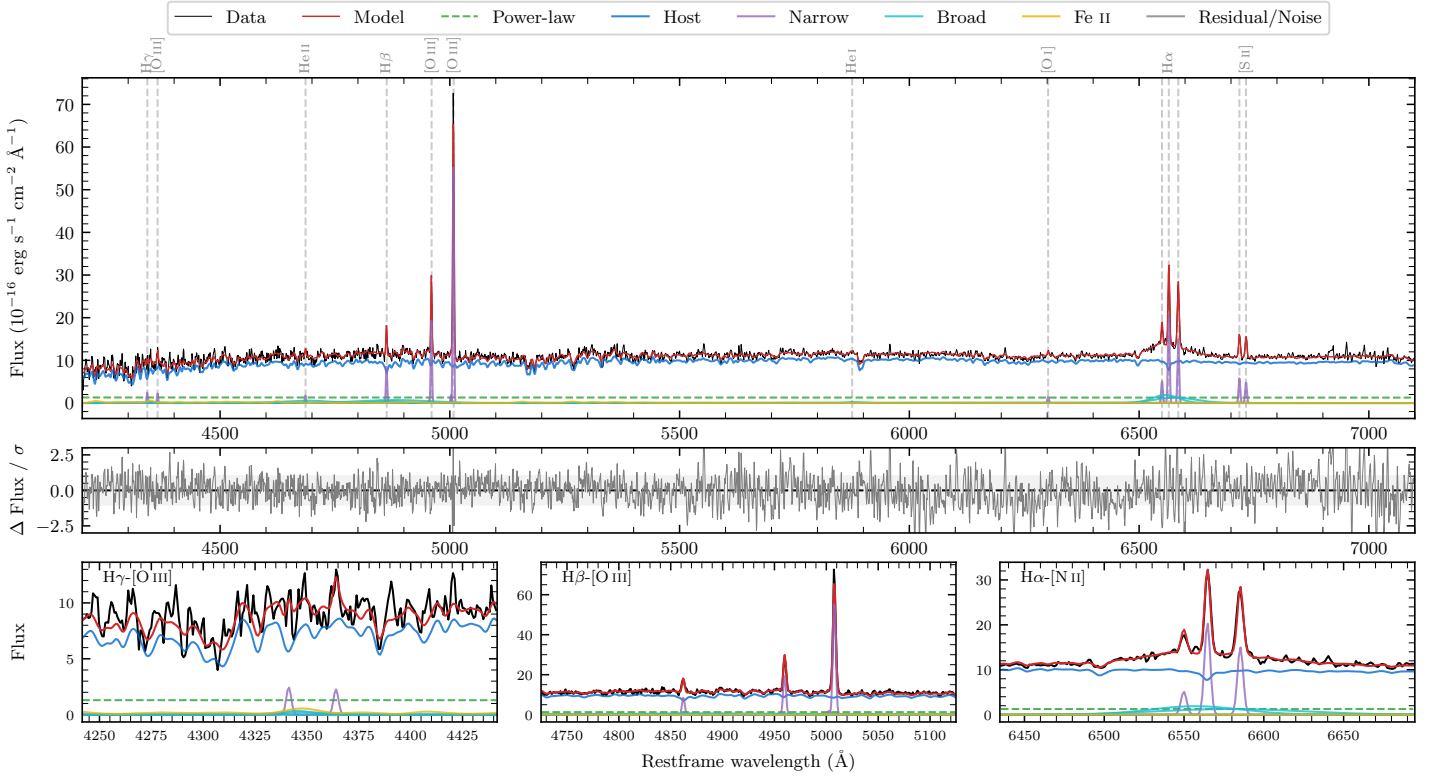
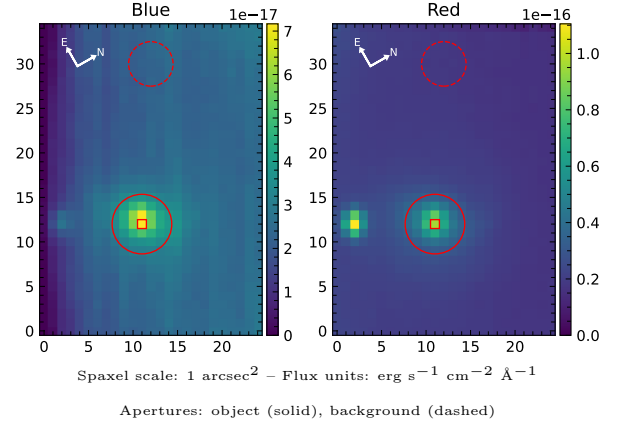


LEDA 1149537

Spectrum ID	194300354_sp1	Spectrum type	Sy 1.5
Alt name	g1630074-001136	Quality flag	good
z	0.0465	AGN reference	6dFGS
RA, Dec	247.5308, -0.1935	MW $E(B - V)$	0.085
MJD	59725.6	Power law α_ν	-1.95 ± 0.05
SNR/ \AA B/R	11.6/26.7	$\log L_{5100, \text{AGN}}$	42.53 ± 0.06
Obs airmass	1.17	$\log H\beta_{\text{Br}}/[\text{O III}]$	-0.08 ± 0.06
SMSS ID	194300354	$\log M_{L5100}/M_\odot$	8.05 ± 0.20
Neighbour	8.6", 194300359	$\log M_{\text{H}\alpha}/M_\odot$	7.14 ± 0.04
SMSS $\langle r_6''_{\text{ap}} \rangle$	16.75 ± 0.06	$\log M_{\text{H}\beta}/M_\odot$	8.14 ± 0.20
2MASS K_{ext}	12.44 ± 0.12	$\log M_{[\text{O III}]} / M_\odot$	8.31 ± 0.20



Emission Line Measurements

Line	$\log L$ (erg s^{-1})	FWHM (km s^{-1})	σ (km s^{-1})	EW (\AA)
H γ Narrow	39.61 ± 0.20	203 ± 62	99 ± 26	6.11 ± 1.79
Hγ Broad	—	—	—	—
[O III] 4364	39.56 ± 0.20	195 ± 62	82 ± 25	5.49 ± 1.53
He II Narrow	39.47 ± 0.21	195 ± 62	82 ± 25	4.52 ± 1.27
He II Broad	40.59 ± 0.10	7610 ± 73	3232 ± 30	59.35 ± 8.11
H β Narrow	40.21 ± 0.04	203 ± 62	99 ± 26	24.44 ± 1.60
Hβ Broad	40.96 ± 0.06	7719 ± 1667	3523 ± 229	139.01 ± 9.49
[O III] 5007	41.04 ± 0.01	203 ± 62	99 ± 26	166.11 ± 1.50
He I Narrow	38.77 ± 0.41	195 ± 62	82 ± 25	0.91 ± 0.63
He I Broad	39.72 ± 0.21	2046 ± 89	869 ± 37	8.00 ± 2.09
[O I] 6300	39.51 ± 0.09	195 ± 62	82 ± 25	4.99 ± 0.63
H α Narrow	40.69 ± 0.01	195 ± 62	82 ± 25	76.17 ± 0.97
Hα Broad	41.17 ± 0.01	3727 ± 123	1494 ± 39	228.63 ± 3.52
[N II] 6585	40.56 ± 0.01	195 ± 62	82 ± 25	56.15 ± 0.80
[S II] 6718	40.16 ± 0.02	195 ± 62	82 ± 25	22.25 ± 0.75
[S II] 6732	40.09 ± 0.03	195 ± 62	82 ± 25	19.02 ± 0.68

Emission Summary

H α broad SNR	3.44
H β broad SNR	1.31
H γ broad SNR	0.77
AGN frac	0.13
Host frac	0.87
$\log L_{5100, \text{Host}}$	43.35
Fe II/H β	0.37
Fe II/[O III]	0.31

Quality Flags

spurious_hab/hbb	0/0
15100	2
balmer	1
balmer_snr	2
hb_width	0
balmer_width	1