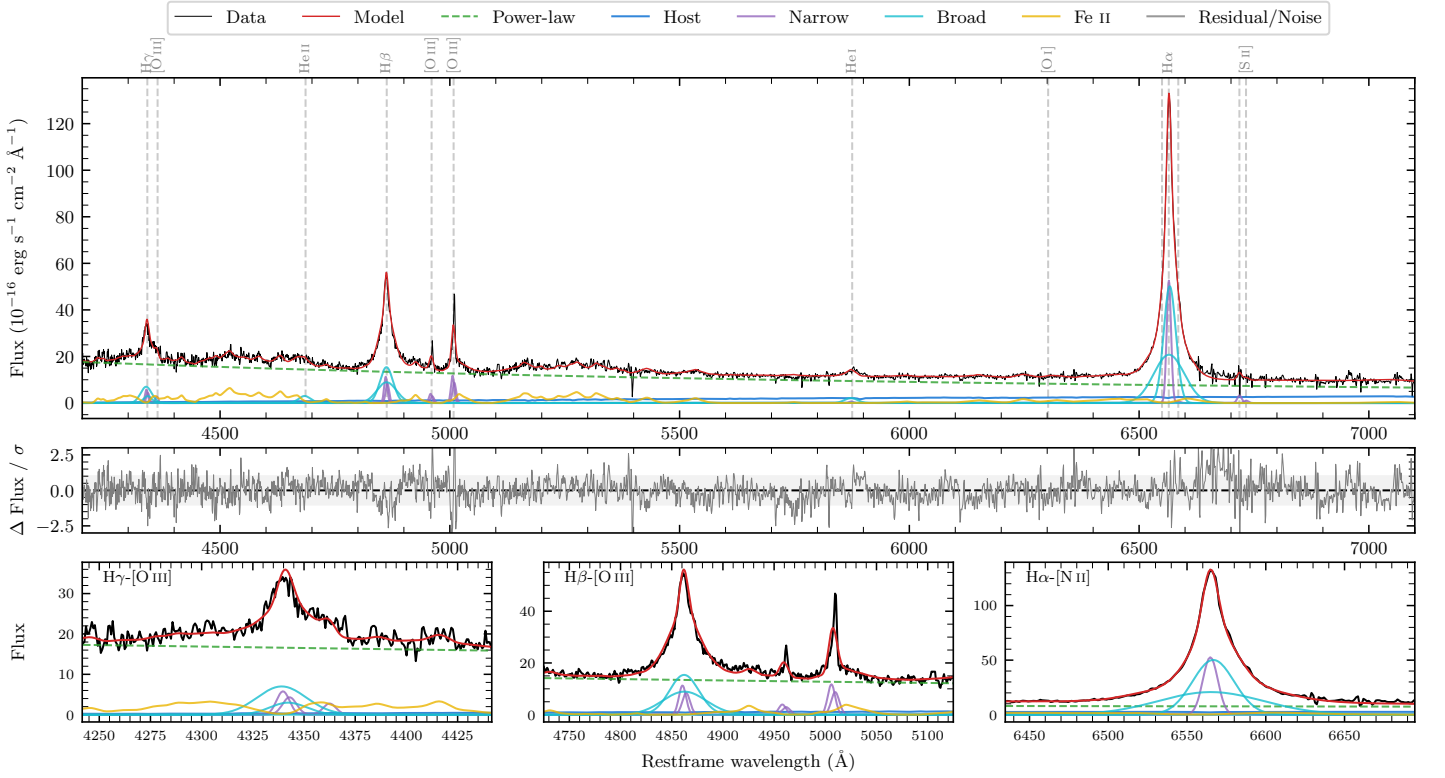
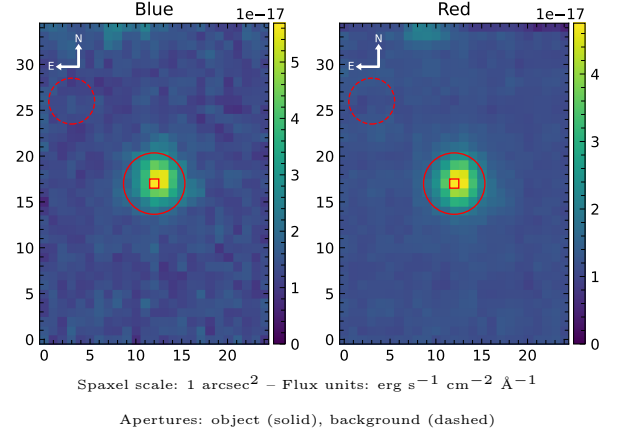


2MASS J16284837–0304078

Spectrum ID	194207007_sp2	Spectrum type	Sy 1.0
Alt name	g1628484–030408	Quality flag	good
z	0.0931	AGN reference	6dFGS
RA, Dec	247.2016, –3.0688	MW $E(B - V)$	0.256
MJD	60090.57	Power law α_ν	-0.14 ± 0.15
SNR/ \AA B/R	10.4/10.5	$\log L_{5100, \text{AGN}}$	44.13 ± 0.01
Obs airmass	1.15	$\log H\beta_{\text{Br}}/[\text{O III}]$	0.71 ± 0.05
SMSS ID	194207007	$\log M_{L5100}/M_\odot$	7.61 ± 0.08
Neighbour	11.0", 194207008	$\log M_{\text{H}\alpha}/M_\odot$	7.55 ± 0.06
SMSS $\langle r_6''_{\text{ap}} \rangle$	16.47 ± 0.18	$\log M_{\text{H}\beta}/M_\odot$	7.64 ± 0.09
2MASS K_{ext}	nan \pm nan	$\log M_{[\text{O III}]} / M_\odot$	7.48 ± 0.09



Emission Line Measurements

Line	$\log L$ (erg s^{-1})	FWHM (km s^{-1})	σ (km s^{-1})	EW (\AA)
H γ Narrow	41.24 ± 0.14	620 ± 231	262 ± 56	5.44 ± 0.36
Hγ Broad	41.80 ± 0.06	1796 ± 207	676 ± 61	18.30 ± 0.66
[O III] 4364	40.71 ± 0.19	514 ± 77	217 ± 31	1.46 ± 0.33
He II Narrow	40.15 ± 0.45	514 ± 77	217 ± 31	0.46 ± 0.32
He II Broad	41.37 ± 0.10	1947 ± 134	827 ± 56	7.44 ± 0.66
H β Narrow	41.57 ± 0.10	620 ± 231	262 ± 56	14.69 ± 0.44
Hβ Broad	42.36 ± 0.04	2115 ± 214	928 ± 176	83.83 ± 0.95
[O III] 5007	41.65 ± 0.03	620 ± 231	262 ± 56	16.62 ± 0.51
He I Narrow	40.21 ± 0.41	514 ± 77	217 ± 31	0.80 ± 0.36
He I Broad	41.28 ± 0.15	1665 ± 384	707 ± 163	8.69 ± 0.75
[O I] 6300	–	–	–	–
H α Narrow	42.16 ± 0.06	514 ± 77	217 ± 31	89.48 ± 0.82
Hα Broad	42.90 ± 0.01	1770 ± 96	849 ± 85	483.87 ± 1.67
[N II] 6585	40.31 ± 0.58	514 ± 77	217 ± 31	1.23 ± 0.69
[S II] 6718	40.97 ± 0.08	514 ± 77	217 ± 31	5.93 ± 0.64
[S II] 6732	40.48 ± 0.20	514 ± 77	217 ± 31	1.93 ± 0.63

Emission Summary

H α broad SNR	43.55
H β broad SNR	14.80
H γ broad SNR	5.75
AGN frac	0.91
Host frac	0.09
$\log L_{5100, \text{Host}}$	43.11
Fe II/H β	0.98
Fe II/[O III]	5.21

Quality Flags

spurious_hab/hbb	0/0
15100	0
balmer	0
balmer_snr	0
hb_width	0
balmer_width	0