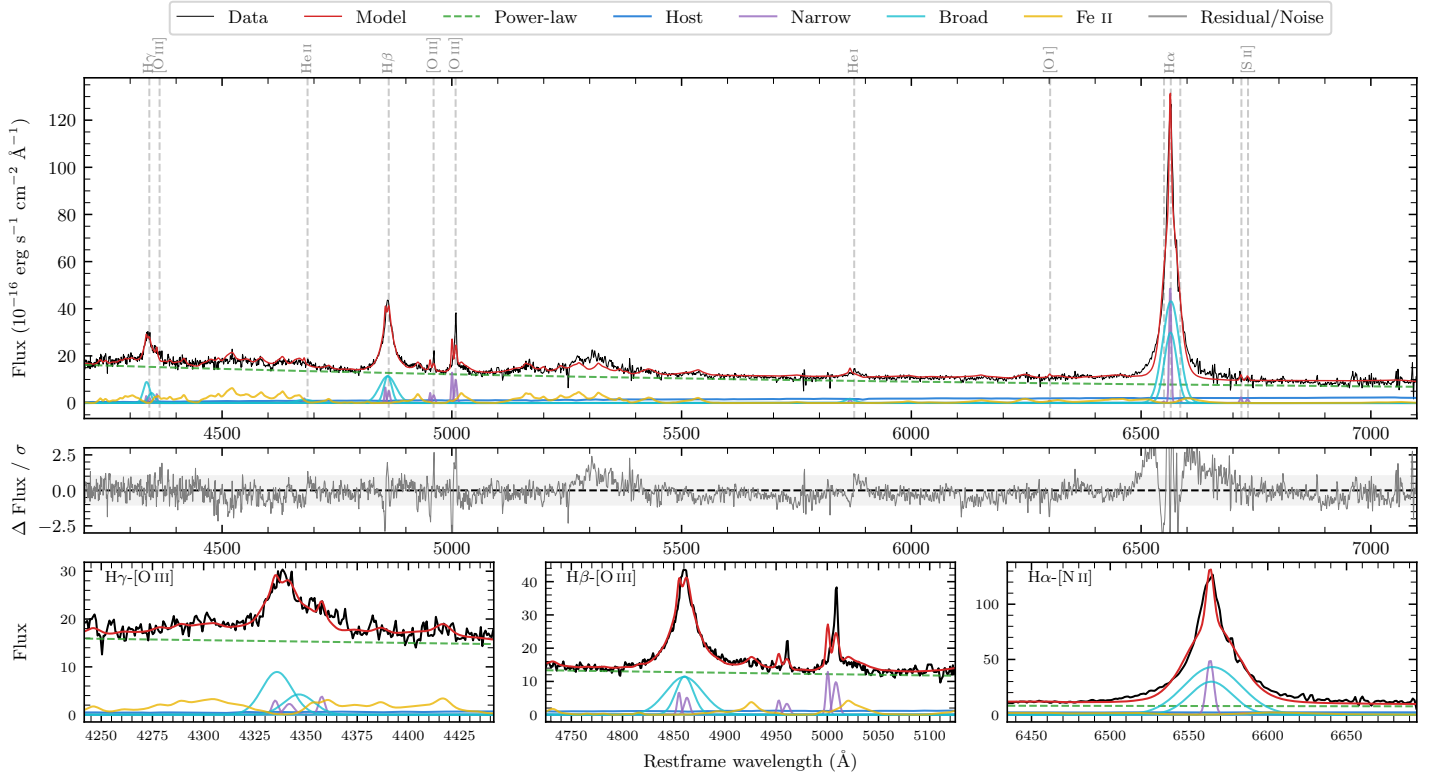
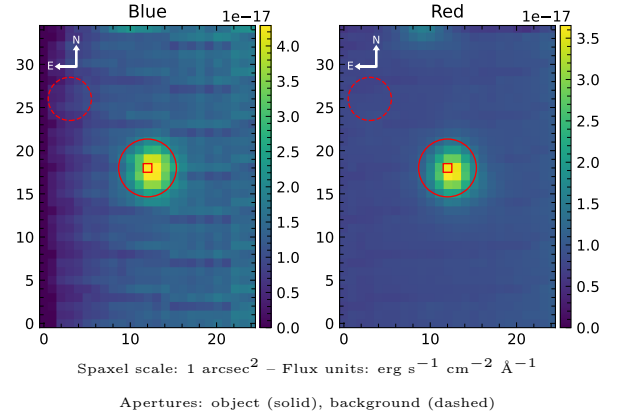


2MASS J16284837–0304078

Spectrum ID	194207007_sp1	Spectrum type	Sy 1.0
Alt name	g1628484–030408	Quality flag	good
z	0.0931	AGN reference	6dFGS
RA, Dec	247.2016, –3.0688	MW $E(B - V)$	0.256
MJD	60090.57	Power law α_ν	-0.38 ± 0.39
SNR/Å B/R	7.5/5.9	$\log L_{5100, \text{AGN}}$	44.12 ± 0.03
Obs airmass	1.15	$\log H\beta_{\text{Br}}/[\text{O III}]$	0.82 ± 0.06
SMSS ID	194207007	$\log M_{L5100}/M_\odot$	7.48 ± 0.12
Neighbour	11.0", 194207008	$\log M_{\text{H}\alpha}/M_\odot$	7.50 ± 0.06
SMSS $\langle r_6''_{\text{ap}} \rangle$	16.47 ± 0.18	$\log M_{\text{H}\beta}/M_\odot$	7.47 ± 0.12
2MASS K_{ext}	nan \pm nan	$\log M_{[\text{O III}]} / M_\odot$	7.25 ± 0.12



Emission Line Measurements

Line	$\log L$ (erg s^{-1})	FWHM (km s^{-1})	σ (km s^{-1})	EW (\AA)
H γ Narrow	40.73 ± 0.42	–	242 ± 34	1.76 ± 0.36
Hγ Broad	41.77 ± 0.07	1517 ± 106	544 ± 30	17.29 ± 0.64
[O III] 4364	40.55 ± 0.31	249 ± 199	105 ± 84	1.04 ± 0.26
He II Narrow	40.34 ± 0.42	249 ± 199	105 ± 84	0.66 ± 0.27
He II Broad	41.16 ± 0.16	2524 ± 123	1072 ± 52	5.02 ± 0.88
H β Narrow	41.10 ± 0.35	–	242 ± 34	5.38 ± 0.44
Hβ Broad	42.26 ± 0.03	1832 ± 258	764 ± 36	65.08 ± 1.03
[O III] 5007	41.43 ± 0.05	–	242 ± 34	11.14 ± 0.54
He I Narrow	40.40 ± 0.44	249 ± 199	105 ± 84	1.13 ± 0.42
He I Broad	41.14 ± 0.17	1430 ± 316	607 ± 134	5.92 ± 1.09
[O I] 6300	40.19 ± 0.48	249 ± 199	105 ± 84	0.81 ± 0.52
H α Narrow	41.79 ± 0.35	249 ± 199	105 ± 84	39.97 ± 0.90
Hα Broad	42.87 ± 0.02	1711 ± 91	648 ± 114	414.13 ± 2.00
[N II] 6585	40.33 ± 0.88	249 ± 199	105 ± 84	1.29 ± 0.73
[S II] 6718	40.58 ± 0.37	249 ± 199	105 ± 84	2.04 ± 0.65
[S II] 6732	40.43 ± 0.40	249 ± 199	105 ± 84	1.55 ± 0.57

Emission Summary

H α broad SNR	35.65
H β broad SNR	10.39
H γ broad SNR	5.07
AGN frac	0.92
Host frac	0.08
$\log L_{5100, \text{Host}}$	43.05
Fe II/H β	1.21
Fe II/[O III]	7.40

Quality Flags

spurious_hab/hbb	0/0
15100	0
balmer	0
balmer_snr	0
hb_width	0
balmer_width	0