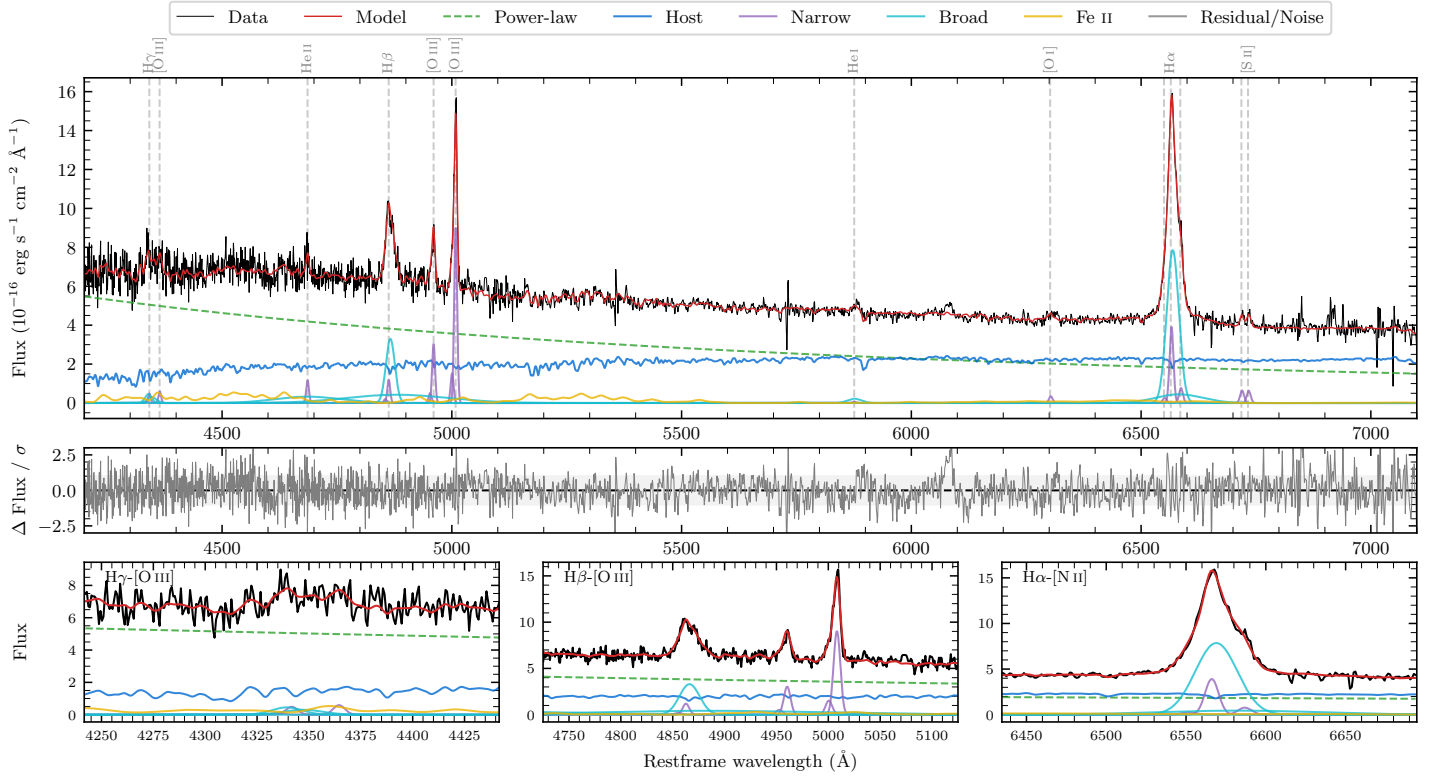
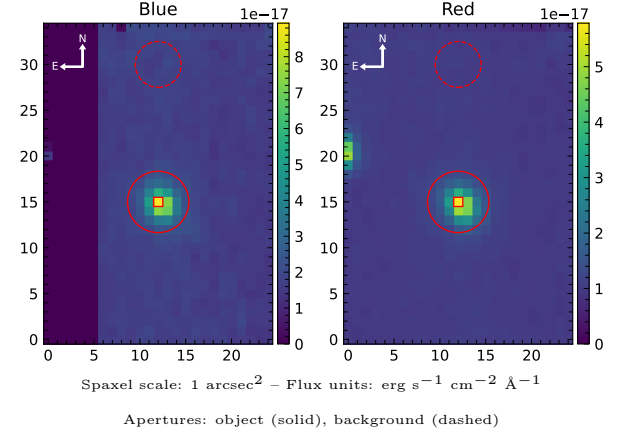


# 6dFGS gJ043659.1–301042

Spectrum ID	19391280_sp1	Spectrum type	Sy 1.2
Alt name	g0436591–301042	Quality flag	good
$z$	0.0999	AGN reference	6dFGS
RA, Dec	69.2465, –30.1784	MW $E(B - V)$	0.032
MJD	60255.67	Power law $\alpha_\nu$	$0.45 \pm 0.04$
SNR/ $\text{\AA}$ B/R	15.5/19.5	$\log L_{5100, \text{AGN}}$	$43.64 \pm 0.01$
Obs airmass	1.04	$\log H\beta_{\text{Br}}/[\text{O III}]$	$0.37 \pm 0.03$
SMSS ID	19391280	$\log M_{L5100}/M_\odot$	$7.13 \pm 0.03$
Neighbour	14.7", 19391337	$\log M_{\text{H}\alpha}/M_\odot$	$6.80 \pm 0.04$
SMSS $\langle r_6 \rangle_{\text{ap}}$	$17.10 \pm 0.05$	$\log M_{\text{H}\beta}/M_\odot$	$7.09 \pm 0.04$
2MASS $K_{\text{ext}}$	nan $\pm$ nan	$\log M_{[\text{O III}]} / M_\odot$	$7.07 \pm 0.03$



## Emission Line Measurements

Line	$\log L$ (erg s <sup>-1</sup> )	FWHM (km s <sup>-1</sup> )	$\sigma$ (km s <sup>-1</sup> )	EW (Å)
H $\gamma$ Narrow	$40.05 \pm 0.32$	$486 \pm 64$	$252 \pm 26$	$0.87 \pm 0.30$
<b>H<math>\gamma</math> Broad</b>	<b><math>40.67 \pm 0.14</math></b>	<b><math>1435 \pm 179</math></b>	<b><math>546 \pm 54</math></b>	<b><math>3.36 \pm 0.51</math></b>
[O III] 4364	$40.06 \pm 0.21$	$455 \pm 64$	$193 \pm 26$	$0.92 \pm 0.28$
He II Narrow	$40.39 \pm 0.09$	$455 \pm 64$	$193 \pm 26$	$2.32 \pm 0.31$
<b>He II Broad</b>	<b><math>41.22 \pm 0.07</math></b>	<b><math>10867 \pm 101</math></b>	<b><math>4615 \pm 42</math></b>	<b><math>15.57 \pm 1.48</math></b>
H $\beta$ Narrow	$40.48 \pm 0.13$	$486 \pm 64$	$252 \pm 26$	$3.15 \pm 0.35$
<b>H<math>\beta</math> Broad</b>	<b><math>41.74 \pm 0.03</math></b>	<b><math>1540 \pm 53</math></b>	<b><math>3270 \pm 116</math></b>	<b><math>57.50 \pm 1.96</math></b>
[O III] 5007	$41.38 \pm 0.01$	$486 \pm 64$	$252 \pm 26$	$26.44 \pm 0.41$
He I Narrow	$39.26 \pm 0.48$	$455 \pm 64$	$193 \pm 26$	$0.30 \pm 0.27$
<b>He I Broad</b>	<b><math>40.36 \pm 0.12</math></b>	<b><math>1764 \pm 103</math></b>	<b><math>749 \pm 43</math></b>	<b><math>3.77 \pm 0.56</math></b>
[O I] 6300	$39.98 \pm 0.11$	$455 \pm 64$	$193 \pm 26$	$1.89 \pm 0.45$
H $\alpha$ Narrow	$41.06 \pm 0.03$	$455 \pm 64$	$193 \pm 26$	$24.95 \pm 0.52$
<b>H<math>\alpha</math> Broad</b>	<b><math>41.94 \pm 0.01</math></b>	<b><math>1467 \pm 68</math></b>	<b><math>657 \pm 36</math></b>	<b><math>190.23 \pm 1.55</math></b>
[N II] 6585	$40.36 \pm 0.15$	$455 \pm 64$	$193 \pm 26$	$4.97 \pm 0.57$
[S II] 6718	$40.28 \pm 0.06$	$455 \pm 64$	$193 \pm 26$	$4.41 \pm 0.48$
[S II] 6732	$40.28 \pm 0.07$	$455 \pm 64$	$193 \pm 26$	$4.38 \pm 0.46$

## Emission Summary

H $\alpha$ broad SNR	21.22
H $\beta$ broad SNR	9.53
H $\gamma$ broad SNR	1.91
AGN frac	0.63
Host frac	0.37
$\log L_{5100, \text{Host}}$	43.42
Fe II/H $\beta$	0.57
Fe II/[O III]	1.31

## Quality Flags

spurious_hab/hbb	0/0
15100	2
balmer	0
balmer_snr	1
hb_width	2
balmer_width	0